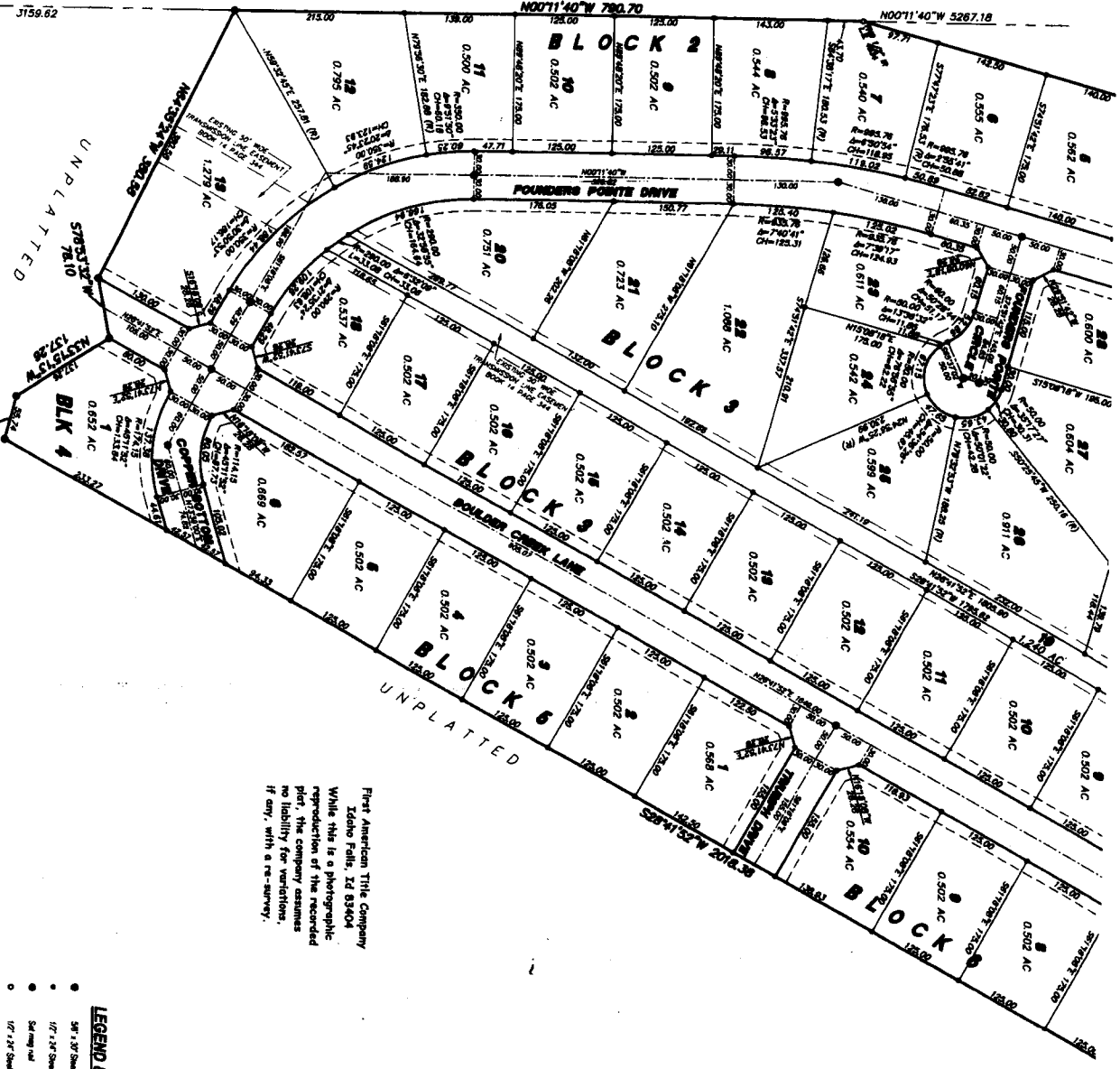


S 1/4 COR. SECTION 31  
 COR. BLK. S. 8795  
 INSTR. No. 1003095

UNPLATTED  
 N00711'40"W 780.70

N00711'40"W 5267.18



**FOUNDERS POINTE**  
 DIVISION NO. 1  
 AN ADDITION TO THE CITY OF AMMON,  
 BONNEVILLE COUNTY, IDAHO  
 BEING PART OF THE S.W. 1/4 OF SECTION 30 AND THE N 1/2 OF SECTION 31 T9N. R.30E. B1M

First American Title Company  
 Idaho Falls, ID 83404  
 While this is a photographic  
 reproduction of the recorded  
 plat, the company assumes  
 no liability for variations,  
 if any, with a re-survey.

- LEGEND & NOTES**
- 3/4" x 3/4" Steel stake set with plastic cap stamped 15 8795
  - 1/2" x 1/2" Steel stake set with plastic cap stamped 15 8795
  - Set flag nail
  - 1/2" x 1/2" Steel stake board with top painted red otherwise
- A Yellow flag with Public Utility Easement is hereby established along all roads for public utility easements and other uses which require easements.  
 The easement contains 11 feet (11'00") average (11'00")

