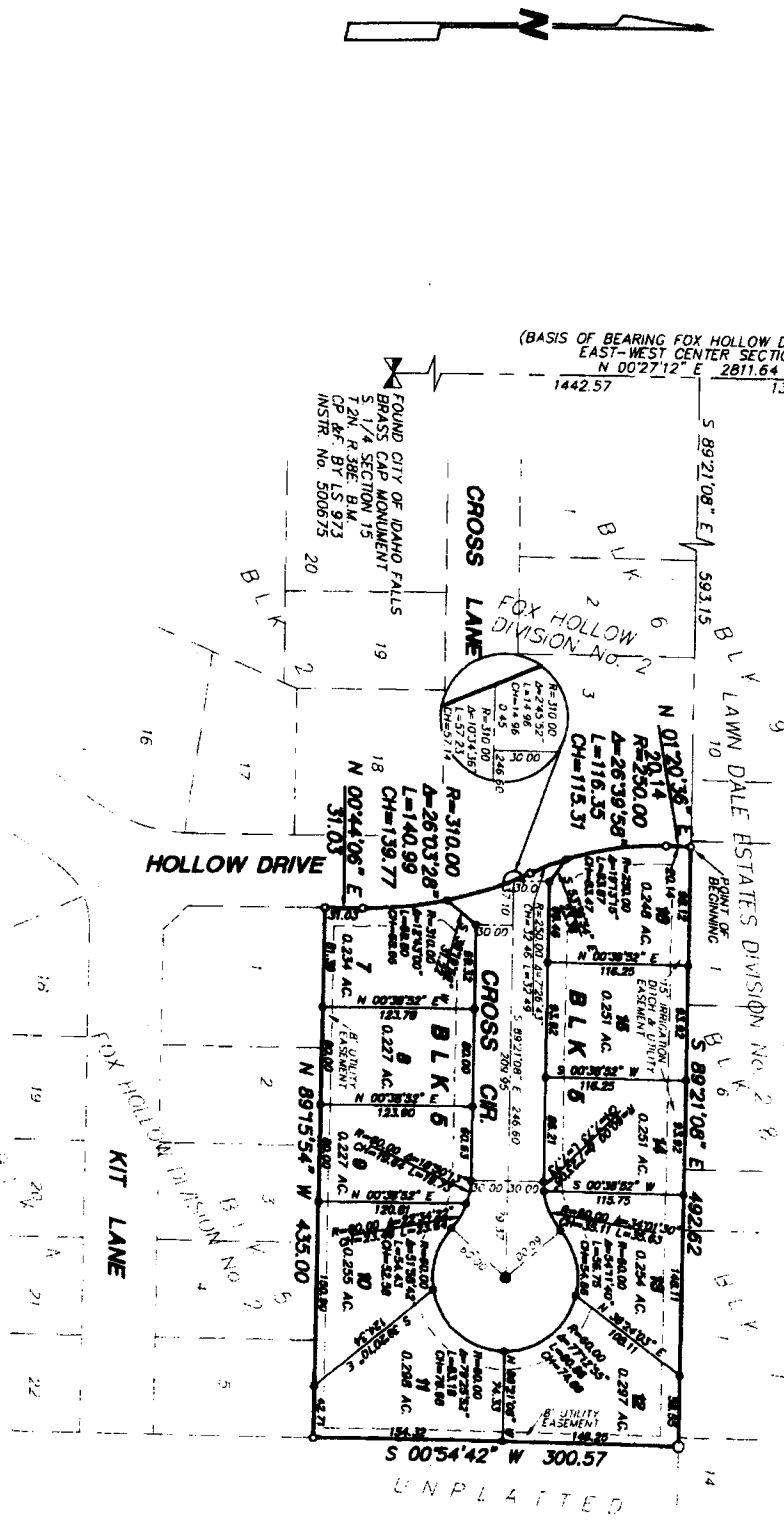


FOUND CITY OF IDAHO FALLS
BRASS CAP MONUMENT
CENTER SECTION 15
T.2N. R.39E. B.M.
CP 44' BY LS 973
INSTR. No. 764158

FIRST AMENDED PLAT OF FOX HOLLOW, DIVISION NO. 2 TO THE CITY OF AMMON, BONNEVILLE COUNTY, IDAHO BEING A REPLAT OF LOT 6, BLOCK 6, FOX HOLLOW, DIVISION NO. 2 LYING IN THE SE 1/4 OF SECTION 16 T.2N. R.39E. B.M.



LEGEND & NOTES

- 5/8" x 30" Steel Re-bar set with plastic cap stamped L S 8795
- 1/2" x 24" Steel Re-bar set with plastic cap stamped L S 8795
- 5/8" steel Re-bar found with caps stamped L S 8795
- 1/2" Steel Re-bar found with caps stamped L S 8795

A fifteen foot wide Public Utility Easement is hereby granted along all road' frontages within each lot. All other public utility easements are fifteen feet wide unless otherwise noted.

Utilities shall have the right to install, maintain, and operate their equipment above and below ground and all other related facilities within the Public Utility Easements identified on this plat map as may be necessary or feasible in providing utility services within and without the lots identified herein, including the right of access to such facilities and the right to require removal of any obstructions including structures, trees and vegetation that may be placed within the PUE. The utility may require the lot owner to remove all structures within the PUE at the lot owner's expense or the utility may remove such structures at the lot owner's expense. At no time may any permanent structures be placed within the PUE or any other obstruction which interferes with the use of the PUE, without the prior written approval of the utilities with facilities in the PUE.