

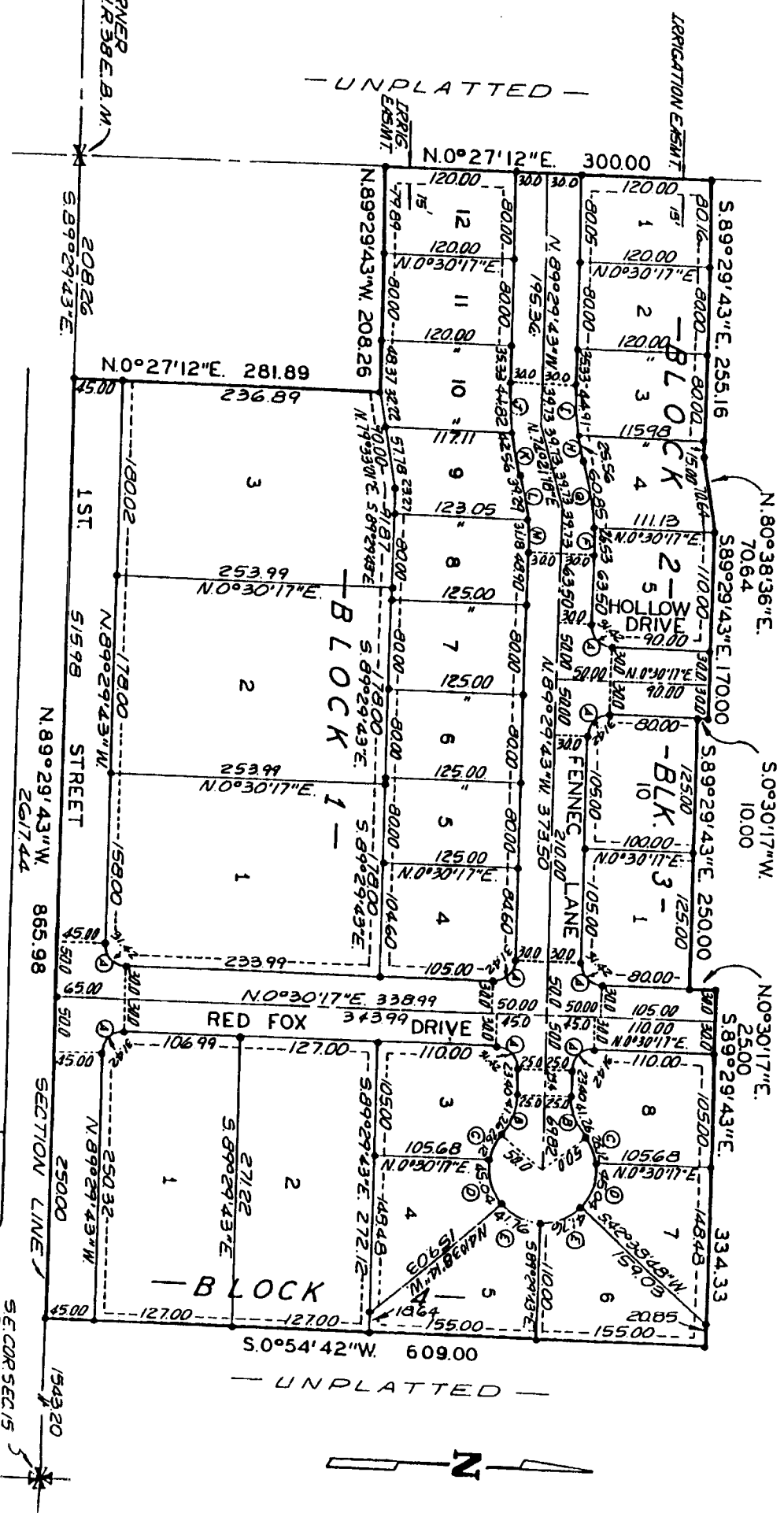
CURVE DATA

CURVE	RADIUS	ARC	CHORD	TANGENT	DELTA
A	20.00	11.42	28.28	20.00	90.00/101
B	60.00	41.25	82.15	60.00	120.00/101
C	90.00	61.74	122.33	90.00	150.00/101
D	120.00	82.15	162.19	120.00	180.00/101
E	150.00	102.56	201.76	150.00	210.00/101
F	180.00	122.97	241.12	180.00	240.00/101
G	210.00	143.38	280.28	210.00	270.00/101
H	240.00	163.79	319.25	240.00	300.00/101
I	270.00	184.20	358.03	270.00	330.00/101
J	300.00	204.61	396.62	300.00	360.00/101
K	330.00	225.02	435.02	330.00	390.00/101
L	360.00	245.43	473.23	360.00	420.00/101
M	390.00	265.84	511.25	390.00	450.00/101
N	420.00	286.25	549.08	420.00	480.00/101
O	450.00	306.66	586.72	450.00	510.00/101
P	480.00	327.07	624.17	480.00	540.00/101
Q	510.00	347.48	661.43	510.00	570.00/101
R	540.00	367.89	698.50	540.00	600.00/101
S	570.00	388.30	735.28	570.00	630.00/101
T	600.00	408.71	771.77	600.00	660.00/101
U	630.00	429.12	808.07	630.00	690.00/101
V	660.00	449.53	844.18	660.00	720.00/101
W	690.00	469.94	880.09	690.00	750.00/101
X	720.00	490.35	915.81	720.00	780.00/101
Y	750.00	510.76	951.34	750.00	810.00/101
Z	780.00	531.17	986.68	780.00	840.00/101
AA	810.00	551.58	1021.83	810.00	870.00/101
AB	840.00	571.99	1056.79	840.00	900.00/101
AC	870.00	592.40	1091.56	870.00	930.00/101
AD	900.00	612.81	1126.14	900.00	960.00/101
AE	930.00	633.22	1160.53	930.00	990.00/101
AF	960.00	653.63	1194.74	960.00	1020.00/101
AG	990.00	674.04	1228.76	990.00	1050.00/101
AH	1020.00	694.45	1262.59	1020.00	1080.00/101
AI	1050.00	714.86	1296.23	1050.00	1110.00/101
AJ	1080.00	735.27	1329.68	1080.00	1140.00/101
AK	1110.00	755.68	1362.94	1110.00	1170.00/101
AL	1140.00	776.09	1396.01	1140.00	1200.00/101
AM	1170.00	796.50	1428.89	1170.00	1230.00/101
AN	1200.00	816.91	1461.58	1200.00	1260.00/101
AO	1230.00	837.32	1494.08	1230.00	1290.00/101
AP	1260.00	857.73	1526.39	1260.00	1320.00/101
AQ	1290.00	878.14	1558.51	1290.00	1350.00/101
AR	1320.00	898.55	1590.44	1320.00	1380.00/101
AS	1350.00	918.96	1622.18	1350.00	1410.00/101
AT	1380.00	939.37	1653.73	1380.00	1440.00/101
AU	1410.00	959.78	1685.09	1410.00	1470.00/101
AV	1440.00	980.19	1716.26	1440.00	1500.00/101
AW	1470.00	1000.60	1747.24	1470.00	1530.00/101
AX	1500.00	1021.01	1778.03	1500.00	1560.00/101
AY	1530.00	1041.42	1808.64	1530.00	1590.00/101
AZ	1560.00	1061.83	1839.06	1560.00	1620.00/101
BA	1590.00	1082.24	1869.29	1590.00	1650.00/101
BB	1620.00	1102.65	1900.34	1620.00	1680.00/101
BC	1650.00	1123.06	1931.20	1650.00	1710.00/101
BD	1680.00	1143.47	1961.87	1680.00	1740.00/101
BE	1710.00	1163.88	1992.35	1710.00	1770.00/101
BF	1740.00	1184.29	2022.64	1740.00	1800.00/101
BG	1770.00	1204.70	2052.74	1770.00	1830.00/101
BH	1800.00	1225.11	2082.65	1800.00	1860.00/101
BI	1830.00	1245.52	2112.37	1830.00	1890.00/101
BJ	1860.00	1265.93	2141.90	1860.00	1920.00/101
BK	1890.00	1286.34	2171.24	1890.00	1950.00/101
BL	1920.00	1306.75	2200.39	1920.00	1980.00/101
BM	1950.00	1327.16	2229.35	1950.00	2010.00/101
BN	1980.00	1347.57	2258.12	1980.00	2040.00/101
BO	2010.00	1367.98	2286.70	2010.00	2070.00/101
BP	2040.00	1388.39	2315.09	2040.00	2100.00/101
BQ	2070.00	1408.80	2343.29	2070.00	2130.00/101
BR	2100.00	1429.21	2371.30	2100.00	2160.00/101
BS	2130.00	1449.62	2399.12	2130.00	2190.00/101
BT	2160.00	1470.03	2426.75	2160.00	2220.00/101
BU	2190.00	1490.44	2454.19	2190.00	2250.00/101
BV	2220.00	1510.85	2481.44	2220.00	2280.00/101
BW	2250.00	1531.26	2508.50	2250.00	2310.00/101
BX	2280.00	1551.67	2535.37	2280.00	2340.00/101
BY	2310.00	1572.08	2562.05	2310.00	2370.00/101
BZ	2340.00	1592.49	2588.54	2340.00	2400.00/101
CA	2370.00	1612.90	2614.84	2370.00	2430.00/101
CB	2400.00	1633.31	2640.95	2400.00	2460.00/101
CC	2430.00	1653.72	2666.87	2430.00	2490.00/101
CD	2460.00	1674.13	2692.60	2460.00	2520.00/101
CE	2490.00	1694.54	2718.14	2490.00	2550.00/101
CF	2520.00	1714.95	2743.49	2520.00	2580.00/101
CG	2550.00	1735.36	2768.65	2550.00	2610.00/101
CH	2580.00	1755.77	2793.62	2580.00	2640.00/101
CI	2610.00	1776.18	2818.40	2610.00	2670.00/101
CJ	2640.00	1796.59	2842.99	2640.00	2700.00/101
CK	2670.00	1817.00	2867.39	2670.00	2730.00/101
CL	2700.00	1837.41	2891.60	2700.00	2760.00/101
CM	2730.00	1857.82	2915.62	2730.00	2790.00/101
CN	2760.00	1878.23	2939.45	2760.00	2820.00/101
CO	2790.00	1898.64	2963.09	2790.00	2850.00/101
CP	2820.00	1919.05	2986.54	2820.00	2880.00/101
CQ	2850.00	1939.46	3009.80	2850.00	2910.00/101
CR	2880.00	1959.87	3032.87	2880.00	2940.00/101
CS	2910.00	1980.28	3055.75	2910.00	2970.00/101
CT	2940.00	2000.69	3078.44	2940.00	3000.00/101
CU	2970.00	2021.10	3100.94	2970.00	3030.00/101
CV	3000.00	2041.51	3123.25	3000.00	3060.00/101
CV	3000.00	2041.51	3123.25	3000.00	3060.00/101
CV	3000.00	2041.51	3123.25	3000.00	3060.00/101

FOX HOLLOW DIVISION NO. 1

TO THE CITY OF AMMON
 BONNEVILLE COUNTY, IDAHO
 A PORTION OF THE S.E. 1/4 OF SECTION 15 T. 2 N. R. 38, E. B. M.

UNPLATTED



First American Title Company
 Idaho Falls, Idaho 83404

This sketch is made solely for the purpose of assisting in locating the premises. The company assumes no liability for alleged loss or damage which may result from reliance on this map.



NOTE: THERE IS A 12 FT. UTILITY EASEMENT HEREBY DEDICATED ALONG THE STREET SIDE OF ALL LOTS AND A 10 FT. UTILITY EASEMENT DEDICATED AT THE REAR OF ALL LOTS. ALL OTHER EASEMENTS SHOWN ARE 5 FT. UNLESS NOTED.

• DENOTES IRON RODS
 --- DENOTES EASEMENTS

