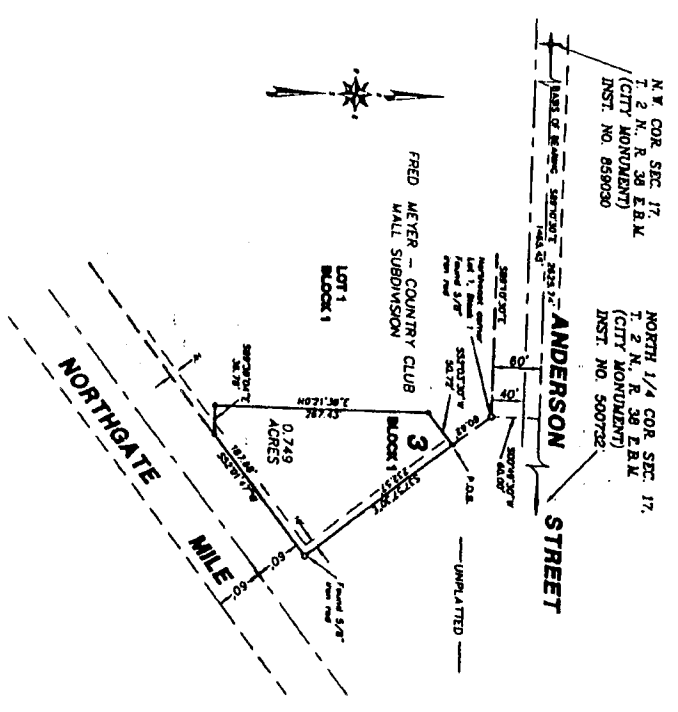


**FIRST AMENDED PLAT OF
FRED MEYER - COUNTRY CLUB MALL SUBDIVISION**
TO THE CITY OF IDAHO FALLS, BONNEVILLE COUNTY, IDAHO
PART OF THE N.W. 1/4, SEC. 17, T. 2 N., R. 38 E.B.M.
BEING A REPLAT OF A PORTION OF LOT 1, BLOCK 1



- NOTES**
- indicates a 1/2" x 24" iron rod placed with a yellow plastic cap marked L.S. 722.
 - indicates a 5/8" x 30" iron rod placed with a yellow plastic cap marked L.S. 722 on boundary corners.
 - a 10" wide utility easement is reserved along the street side of all lots.
 - - - indicates utility easements.
 - indicates found property corners with a yellow cap marked L.S. 722.

First American Title Company
Idaho Falls, Idaho 83404

This sketch is made solely for the purpose of assisting in locating the premises. The company assumes no liability for alleged loss or damage which may result from reliance on this map.

