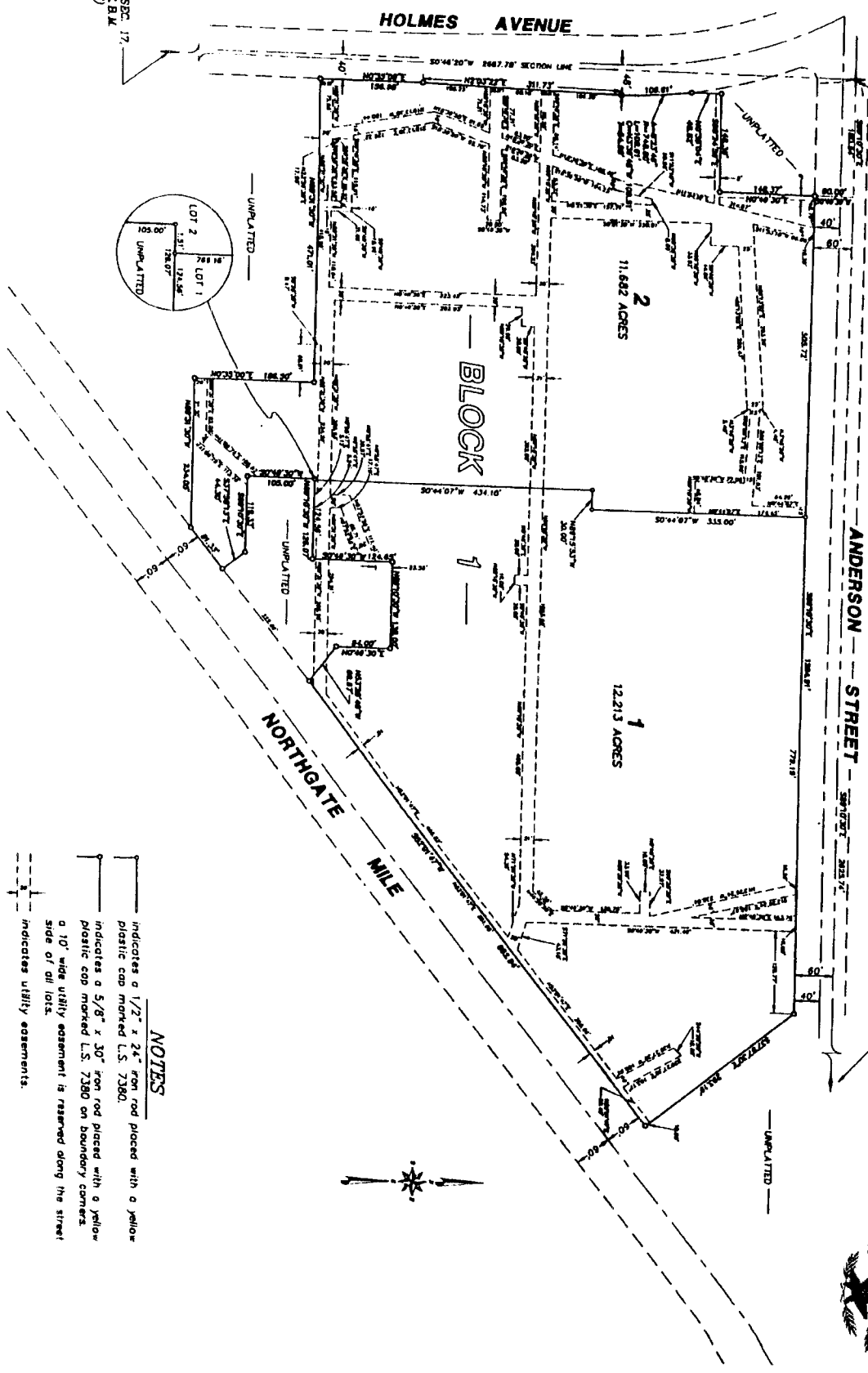


# FRED MEYER - COUNTRY CLUB MALL SUBDIVISION

TO THE CITY OF IDAHO FALLS, BONNEVILLE COUNTY, IDAHO  
PART OF THE N.W. 1/4, SEC. 17, T. 2 N., R. 38 E.B.M.

N.W. COR. SEC. 17,  
T. 2 N., R. 38 E.B.M.  
(CITY MONUMENT)

NORTH 1/4 COR. SEC. 17,  
T. 2 N., R. 38 E.B.M.  
(CITY MONUMENT)



*First American Tile Company*  
Idaho Falls, Idaho 83404  
This sketch is made solely for the purpose of assisting in locating the premises. The company assumes no liability for alleged loss or damage which may result from reliance on this map.



**NOTES**

- indicates a 1/2" x 24" iron rod placed with a yellow plastic cap marked L.S. 7380.
- indicates a 5/8" x 30" iron rod placed with a yellow plastic cap marked L.S. 7380 on boundary corners.
- a 10' wide utility easement is reserved along the street side of all lots.
- indicates utility easements.

WEST 1/4 COR. SEC. 17,  
T. 2 N., R. 38 E.B.M.  
(CITY MONUMENT)