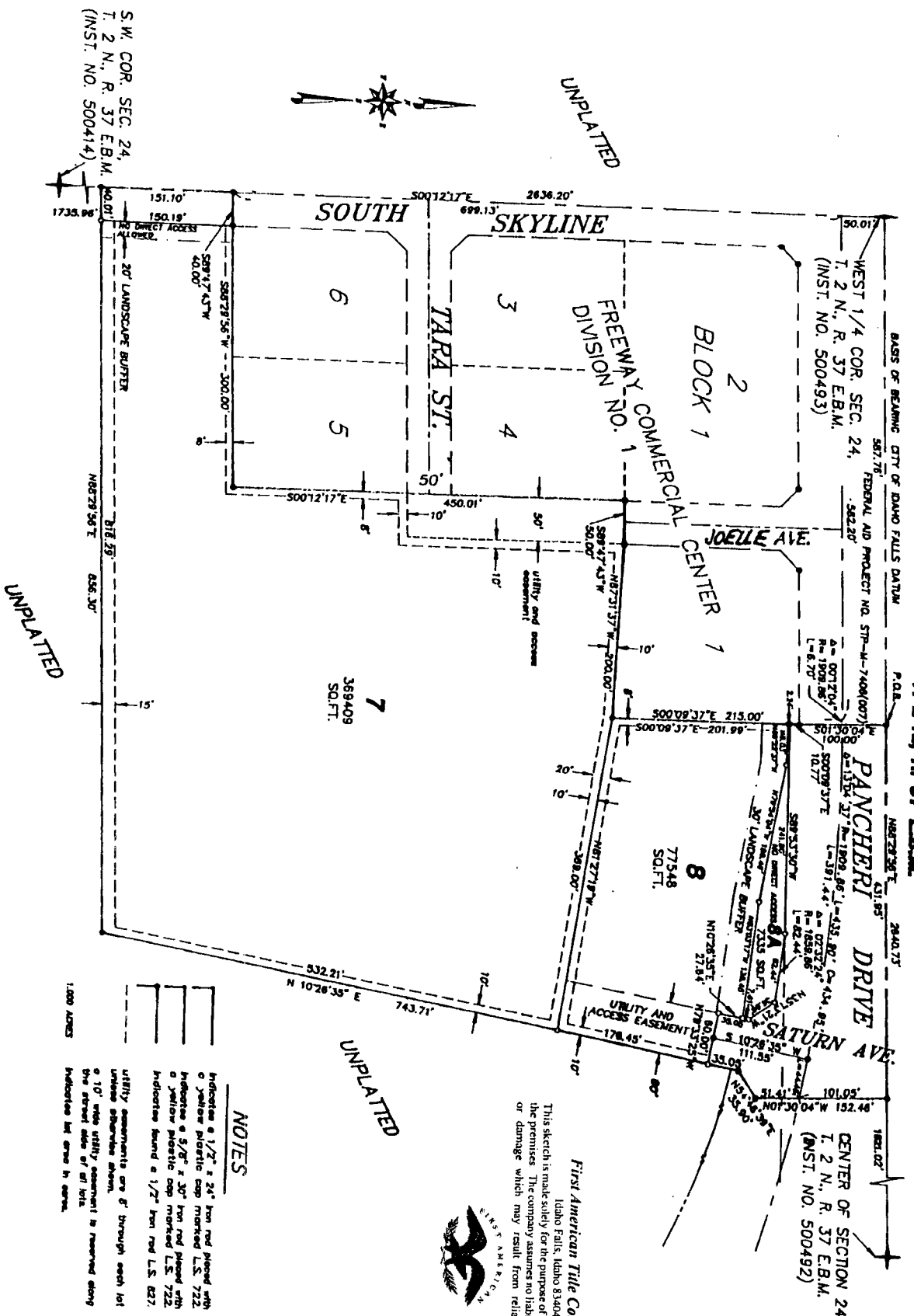


FREEWAY COMMERCIAL CENTER

DIVISION NO. 2

AN ADDITION TO THE CITY OF IDAHO FALLS, BONNEVILLE COUNTY, IDAHO

PART OF S.W. 1/4 OF SECTION 24,
T. 2 N., R. 37 E.B.M.



First American Title Company
 Idaho Falls, Idaho 83404

This sketch is made solely for the purpose of assisting in locating the premises. The company assumes no liability for alleged loss or damage which may result from reliance on this map.



NOTES

- Hydrostone $\frac{1}{2}$ " x $\frac{3}{4}$ " iron rod placed with a yellow plastic cap marked L.S. 722.
- Hydrostone $\frac{5}{8}$ " x $\frac{3}{4}$ " iron rod placed with a yellow plastic cap marked L.S. 722.
- Hydrostone band $\frac{1}{2}$ " iron rod L.S. 827.
- UTILITY easements are $\frac{5}{8}$ " through each lot unless otherwise shown.
- a 10' wide utility easement is reserved along the street side of all lots.
- Indicators list given in annex.

S.W. COR. SEC. 24,
 T. 2 N., R. 37 E.B.M.
 (INST. NO. 500414)

1:500 ADMS