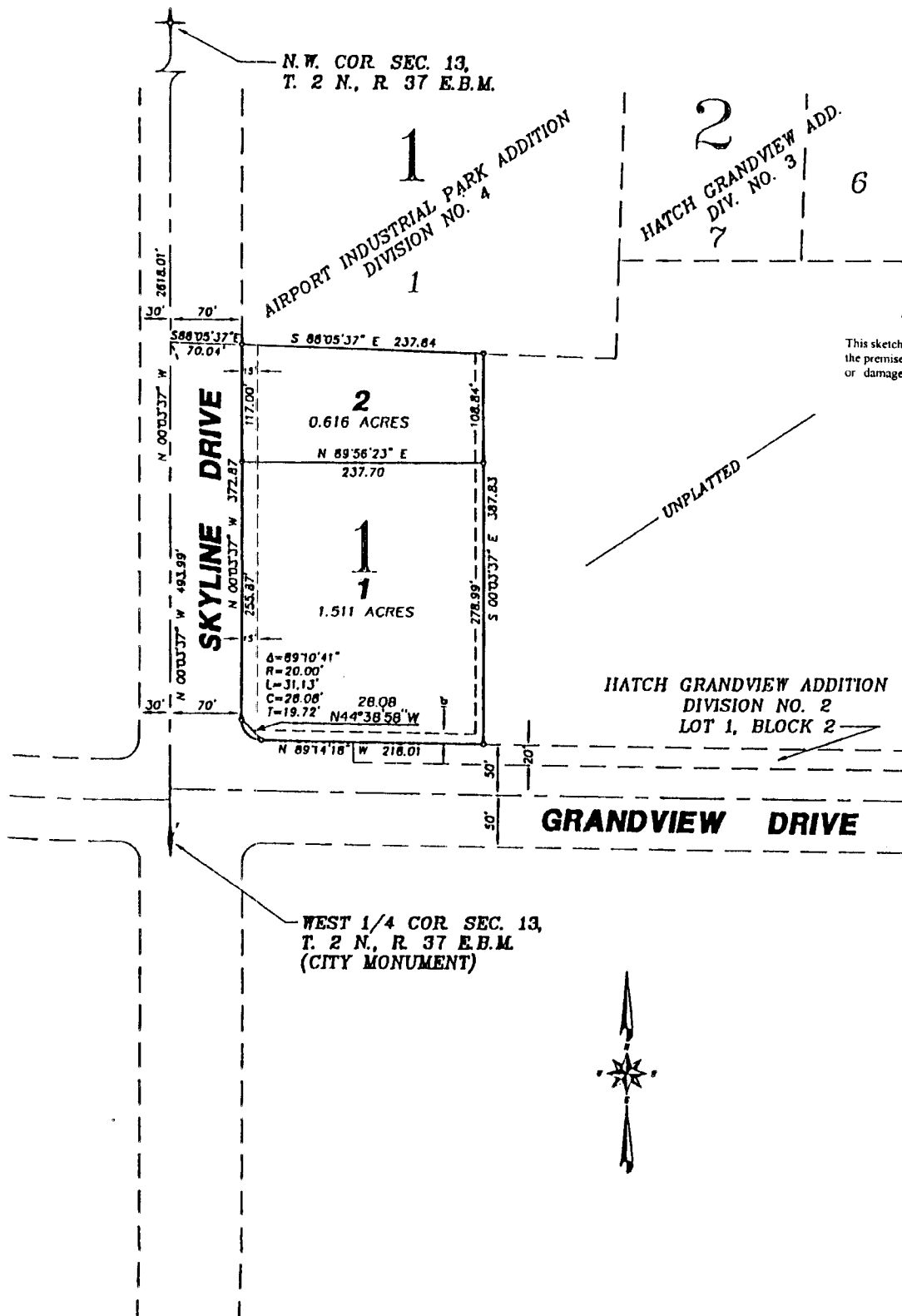


# G.H.G. SUBDIVISION

TO THE CITY OF IDAHO FALLS, IDAHO  
PART OF THE S.W. 1/4 OF THE N.W. 1/4 OF SECTION 13, T. 2 N., R. 37 E.B.M.



**First American Title Company**

Idaho Falls, Idaho 83404

This sketch is made solely for the purpose of assisting in locating the premises. The company assumes no liability for alleged loss or damage which may result from reliance on this map



## NOTES

indicates a 1/2" x 24" iron rod placed with a yellow plastic cap marked L.S. 760.  
utility easements are 8' thru each lot unless otherwise shown.