

UNPLATTED STONEBROOK DIVISION NO. 6

GALASAD ADDITION DIVISION NO. 1

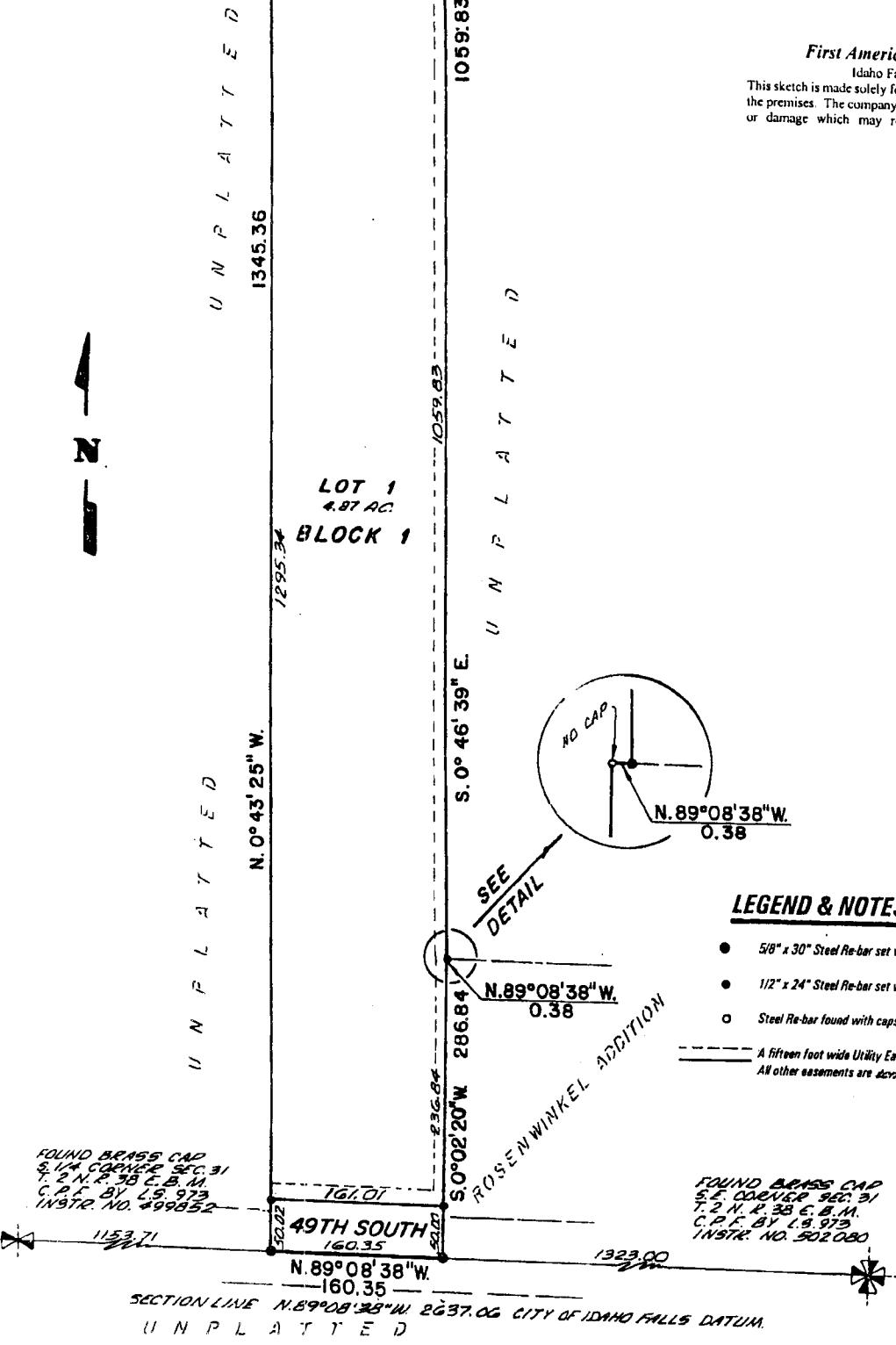
**TO THE CITY OF IDAHO FALLS,
BONNEVILLE COUNTY, IDAHO**

IN THE S.W. 1/4 S.E. 1/4 SECTION 31 T. 2 N. R. 38 E., B.M.

First American Title Company

Idaho Falls, Idaho 83404

This sketch is made solely for the purpose of assisting in locating the premises. The company assumes no liability for alleged loss or damage which may result from reliance on this map.



LEGEND & NOTES

- 5/8" x 30" Steel Re-bar set with plastic cap stamped L.S. 8795
- 1/2" x 24" Steel Re-bar set with plastic cap stamped L.S. 8795
- Steel Re-bar found with caps stamped - AS SNOW

--- A fifteen foot wide Utility Easement is hereby granted along all road frontages within each lot.
All other easements are 40 feet wide unless otherwise noted.

FOUND BRASS CAP
S.E. CORNER SEC. 31
T. 2 N. R. 38 E. B.M.
C.P.F. BY L.S. 973
INST. NO. 499852

FOUND BRASS CAP
S.E. CORNER SEC. 31
T. 2 N. R. 38 E. B.M.
C.P.F. BY L.S. 973
INST. NO. 502080