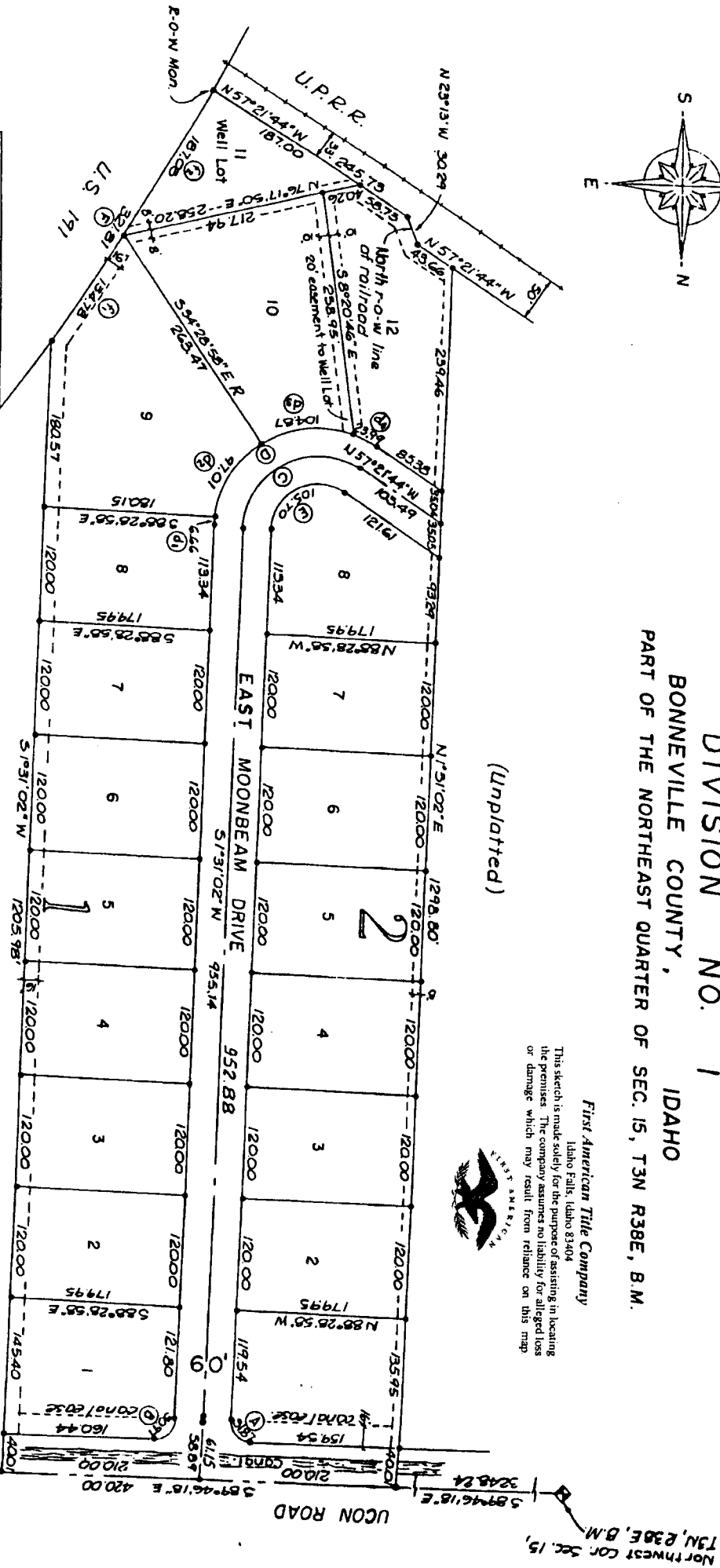


GALAXY ESTATES

DIVISION NO. 1
 BONNEVILLE COUNTY, IDAHO
 PART OF THE NORTHEAST QUARTER OF SEC. 15, T3N R38E, B.M.

(Unplatted)

First American Title Company
 Idaho Falls, Idaho 83404
 This sketch is made solely for the purpose of assisting in locating the premises. The company assumes no liability for alleged loss or damage which may result from reliance on this map.



Curve Data

NO.	Δ	R	L	C	T
A	91°17'20"	20.00	31.87	28.60	20.46
B	80°42'40"	20.00	30.97	27.96	19.56
C	121°07'14"	80.00	169.12	139.34	141.75
D	121°07'14"	110.00	232.54	191.59	194.90
d1	5°25'20"	110.00	6.66	6.66	
d2	50°31'40"	110.00	9.70	93.89	
d3	54°37'30"	110.00	104.87	100.94	
d4	12°29'44"	110.00	23.99	23.94	
E	121°07'14"	50.00	105.70	87.09	88.59
F	2°07'34"	500.79	981.81	521.28	121.06
f1	2°33'57"	3009.74	154.78	154.77	

(Unplatted)

NOTE:

An easement 10 feet in width is reserved along the street side of all lots, for utilities (power, telephone, etc. cable)

— indicates iron rod
 Drainage easements are 5' along all side and rear lot lines.