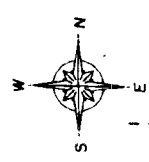
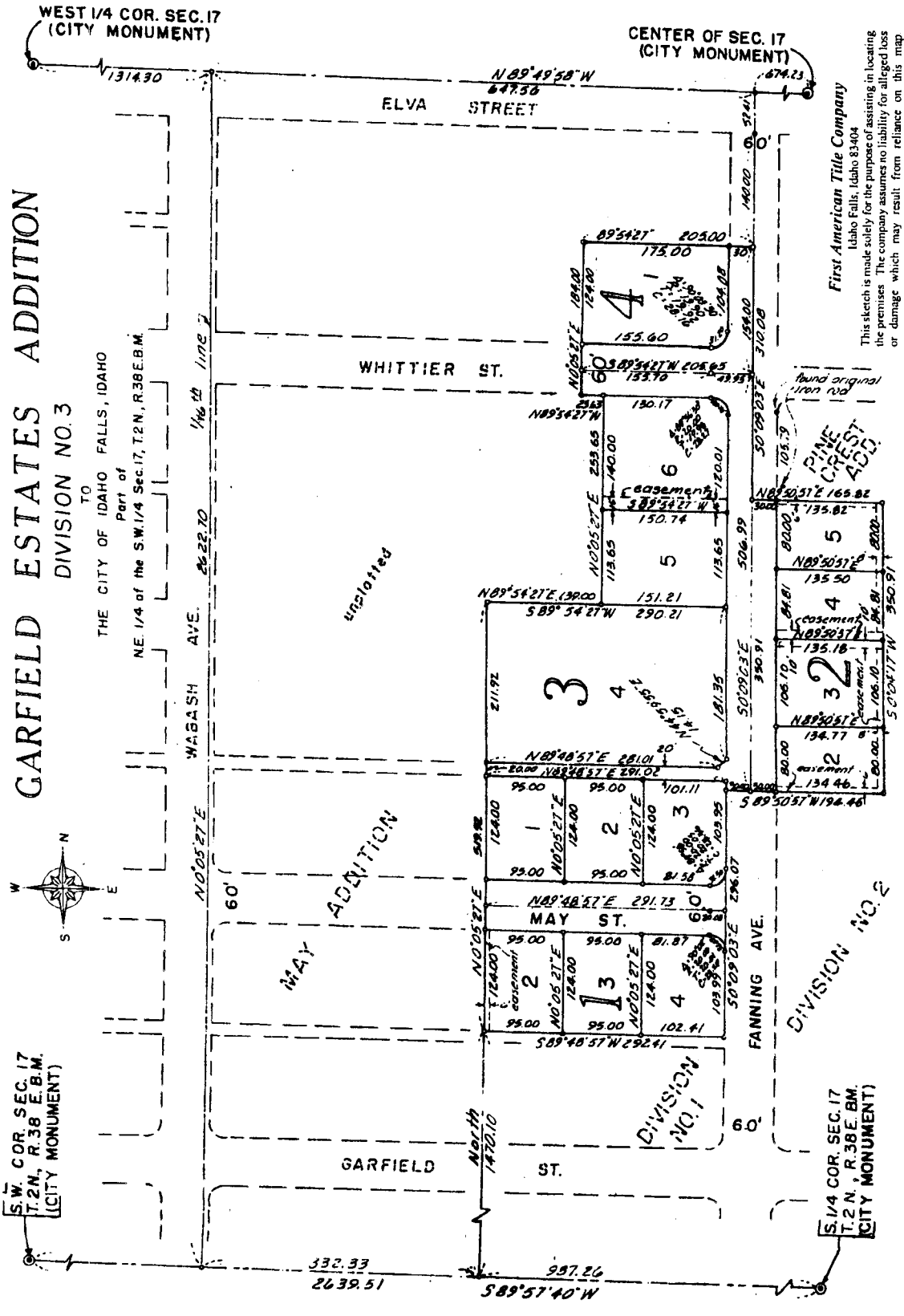


GARFIELD ESTATES ADDITION

DIVISION NO. 3



First American Title Company
 Idaho Falls, Idaho 83404
 This sketch is made solely for the purpose of assisting in locating the premises. The company assumes no liability for alleged loss or damage which may result from reliance on this map.



S.W. COR. SEC. 17
 T. 2 N., R. 38 E. B.M.
 (CITY MONUMENT)

S. 1/4 COR. SEC. 17
 T. 2 N., R. 38 E. B.M.
 (CITY MONUMENT)

THE CITY OF IDAHO FALLS, IDAHO
 Part of
 NE. 1/4 of the S.W. 1/4 Sec. 17, T. 2 N., R. 38 E. B.M.

PINE
 CRIST
 ADD.

DIVISION NO. 2

DIVISION NO. 1

undeveloped

MAY

ADDITION

GARFIELD

WHITTIER ST.

ELVA STREET

MAY ST.

FANNING AVE.

WABASH AVE.

WEST 1/4 COR. SEC. 17
(CITY MONUMENT)

CENTER OF SEC. 17
(CITY MONUMENT)

332.33
2639.51

997.26
589°57'40"W

60'

60'

60'

60'

60'

60'

60'

60'

60'

60'

60'

60'

60'

60'

60'

60'

60'

60'

60'

60'

60'

60'

60'

60'

60'

60'

60'

60'

60'

60'

60'

60'

60'