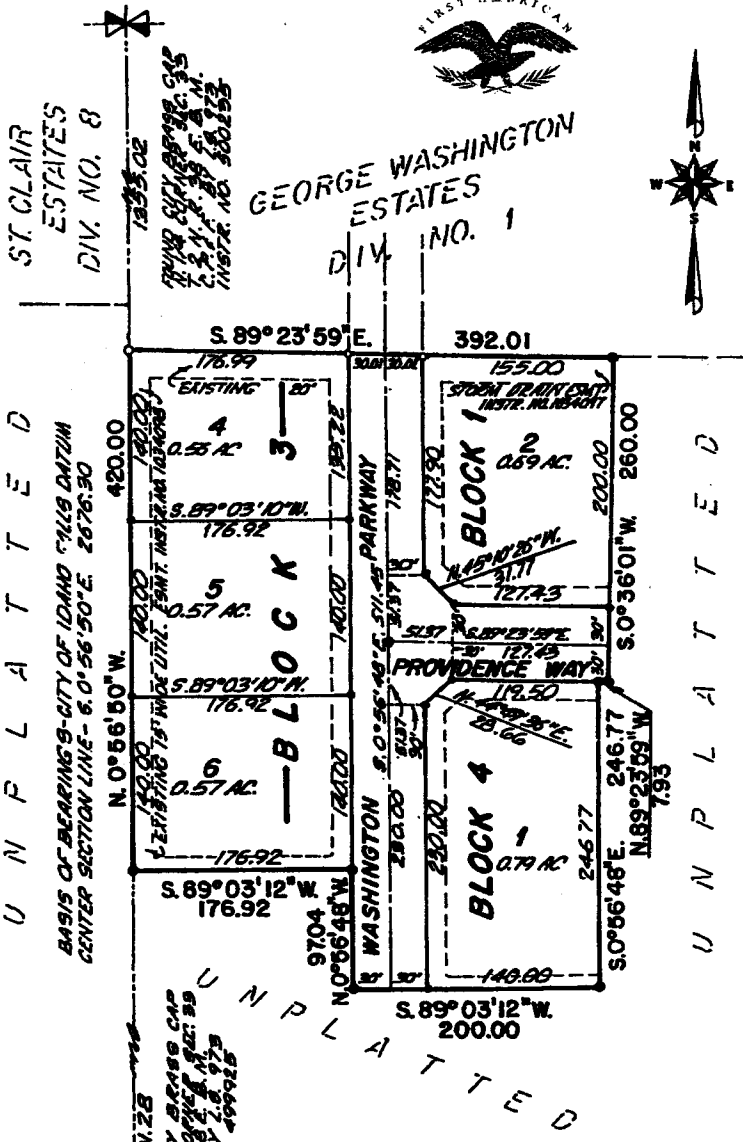


First American Title Company
 Idaho Falls, Idaho 83404

This sketch is made solely for the purpose of assisting in locating the premises. The company assumes no liability for alleged loss or damage which may result from reliance on this map.



GEORGE WASHINGTON ESTATES
DIVISION NO. 2
AN ADDITION TO THE CITY OF IDAHO FALLS,
BONNEVILLE COUNTY, IDAHO
BEING PART OF THE N.W. 1/4 S.W. 1/4 N.E. 1/4 SECTION 33 T.2N.R.38E.B.M.

LEGEND & NOTES

- 5/8" x 3/8" Steel rebar set with plastic cap stamped L.S.8795
- 1/2" x 24" Steel rebar set with plastic cap stamped L.S.8795
- 5/8" Steel rebar found with caps stamped L.S.8795
- 1/2" Steel rebar found with caps stamped L.S.8795

A fifteen foot wide Utility Easement is hereby granted along all road frontages within each lot. All other utility easements are ten feet wide unless noted otherwise.

U N P L A T T E D
 BASIS OF BEARING'S - CITY OF IDAHO FALLS DATUM
 CENTER SECTION LINE - 6.0° 56' 50" E. 2876.30
 N. 0° 56' 50" W. 420.00

FOUND CITY BRASS CAP
 CENTER OF CORNER. DATE: 8/9
 BY: J. B. E. JR.
 INSTR. NO. 276444