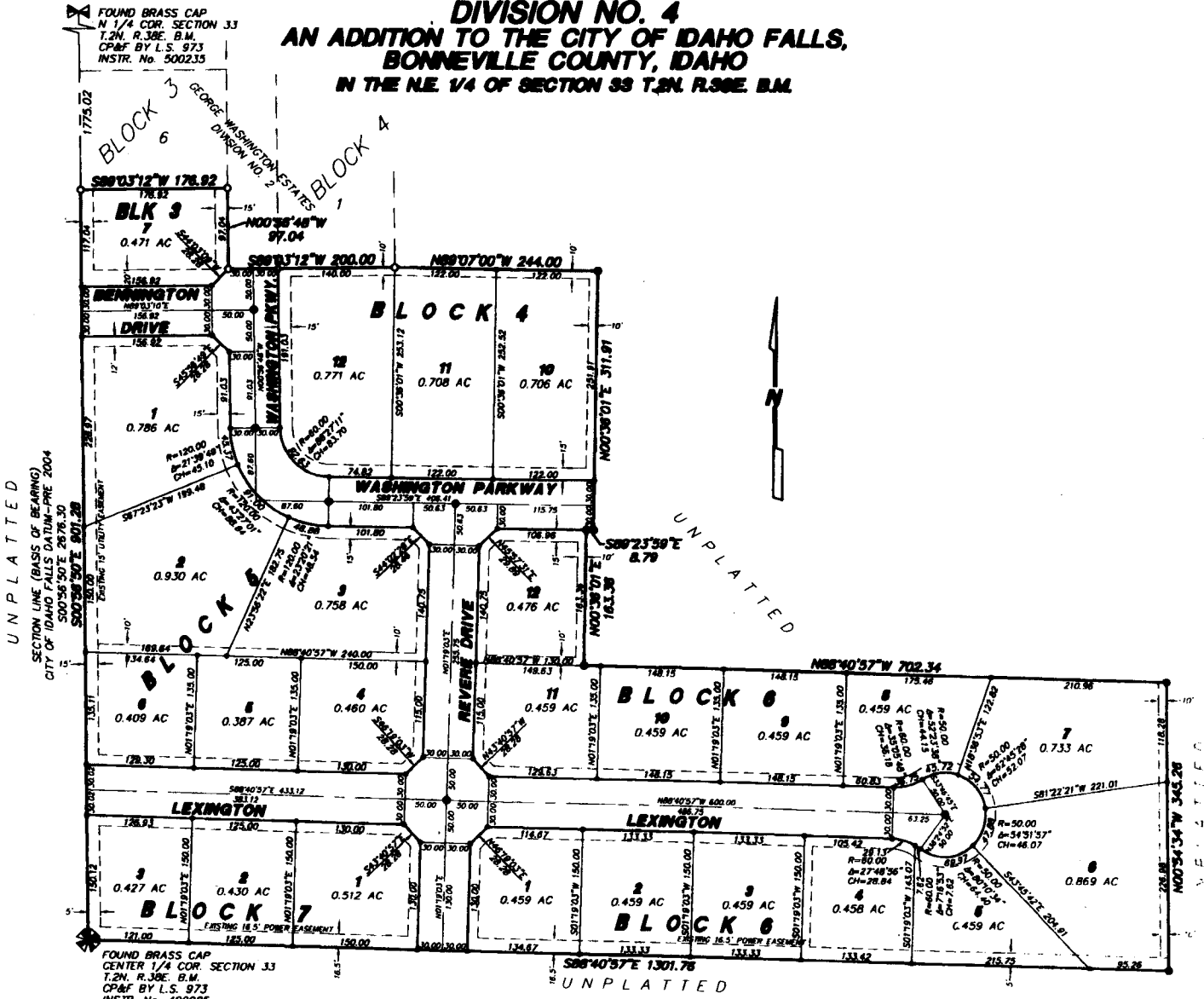


GEORGE WASHINGTON ESTATES

DIVISION NO. 4

AN ADDITION TO THE CITY OF IDAHO FALLS,
 BONNEVILLE COUNTY, IDAHO
 IN THE NE 1/4 OF SECTION 33 T.2N. R.36E. B.M.



LEGEND & NOTES

- 50" x 30" Steel rebar set with plastic cap stamped L.S.8785
- 1/2" x 3/4" Steel rebar set with plastic cap stamped L.S.8785
- 50" Steel rebar found with caps stamped L.S.8785
- 1/2" Steel rebar found with caps stamped L.S.8785

A twelve foot wide Utility Easement is hereby granted/reserved along all road frontages within each lot. All other utility easements are ten foot wide unless noted otherwise.

First American Title Company
 Idaho Falls, Idaho 83404

While this is a photographic reproduction of the recorded plat, the Company assumes no liability for variations, if any, with a re-survey.