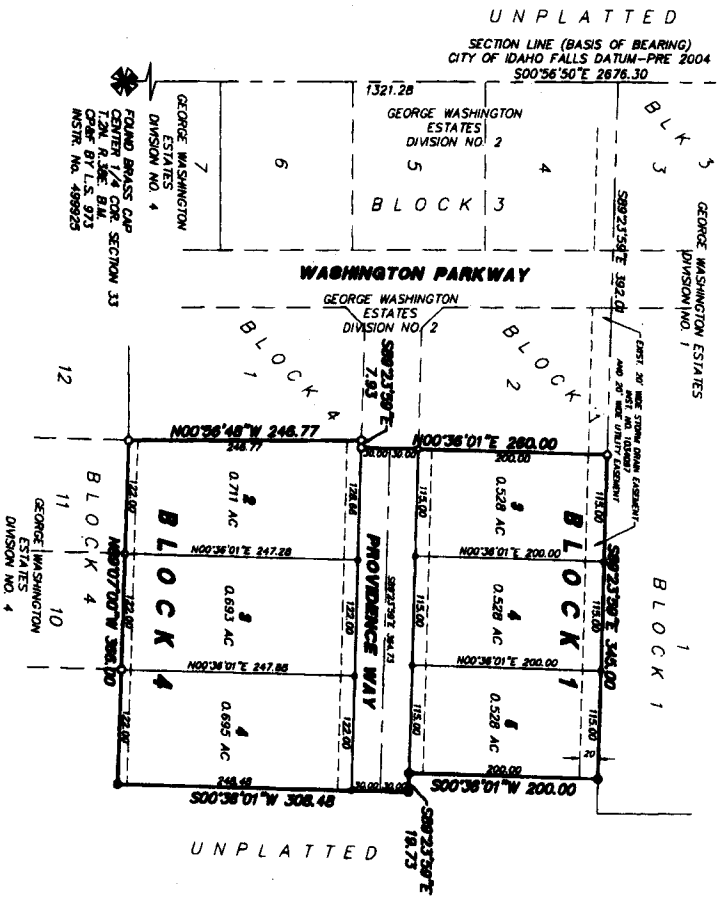


FOUND BRASS CAP
 N 1/4 COR. SECTION 33
 T.2N. R.38E. B.10
 CAP BY L.S. 973
 INSTR. NO. 500235

GEORGE WASHINGTON ESTATES

AN ADDITION TO THE CITY OF DAHO FALLS,
 BONNEVILLE COUNTY, DAHO
 IN THE NE 1/4 OF SECTION 33 T.2N. R.38E. B.10

First American Title Company
 Idaho Falls, Id 83404
 While this is a photographic
 reproduction of the recorded
 plat, the company assumes
 no liability for variations,
 if any, with a re-survey.



LEGEND & NOTES

- 50" x 30" Steel roller seal with plastic cap stamped L.S. 8785
 - 1/2" x 24" Steel roller seal with plastic cap stamped L.S. 8785
 - 50" Steel roller found with caps stamped L.S. 8785
 - 1/2" Steel roller found with caps stamped L.S. 8785
- A. 15-foot fire with 15-foot easement to heavily grade-retained along all road frontages within each lot. All other utility easements are set out here unless noted otherwise.