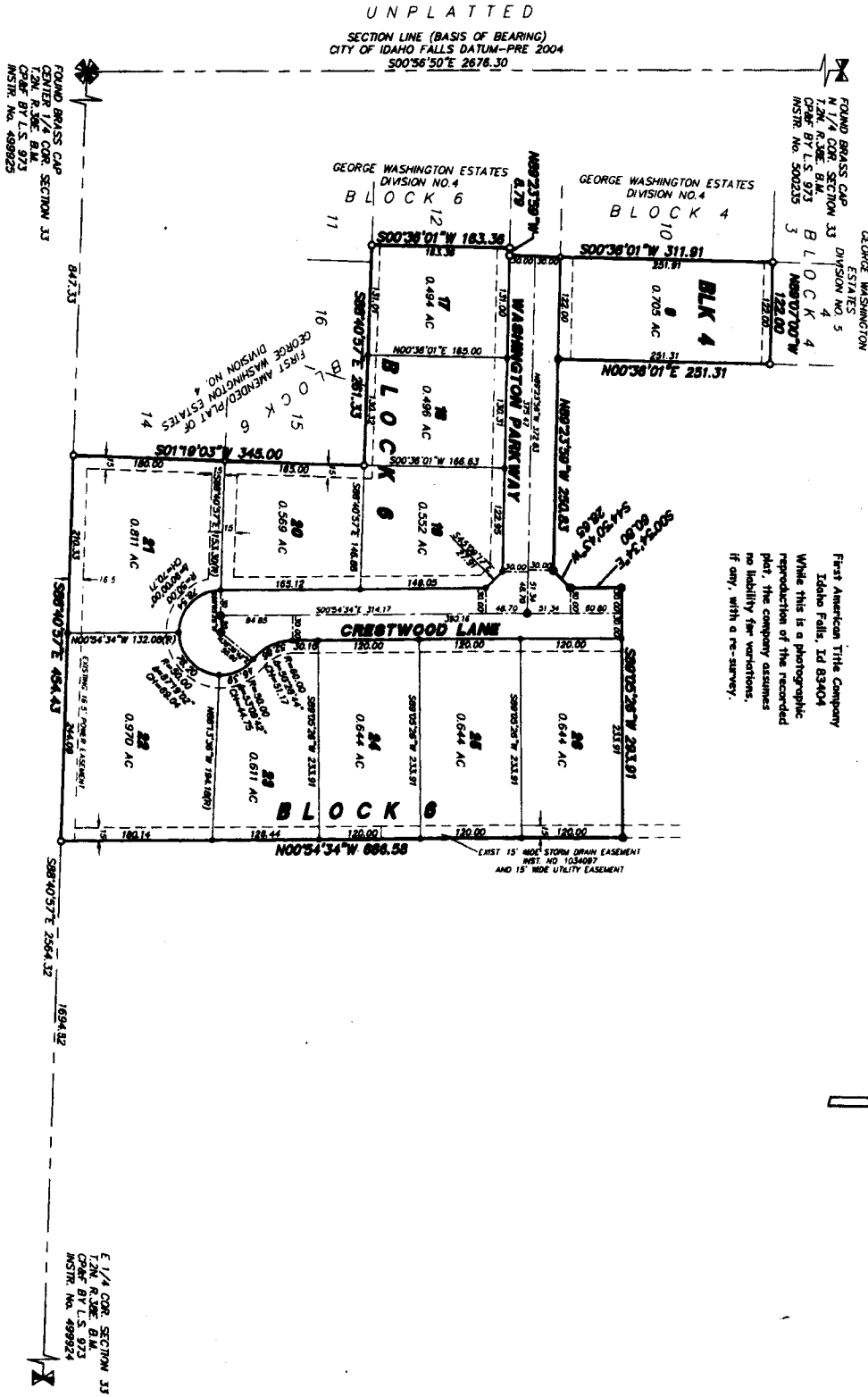


GEORGE WASHINGTON ESTATES

AN ADDITION TO THE CITY OF DAHO FALLS,
 BONNEVILLE COUNTY, IDAHO
 DIVISION NO. 6
 INCLUDING A REBLAT OF LOTS 4 THRU 6, BLOCK 6 AND A PORTION OF LOT 3 AND 6, BLOCK 8,
 GEORGE WASHINGTON ESTATES, DIVISION NO. 4, LYING IN THE NE 1/4 OF SECTION 33, T2N R36E BLK



LEGEND & NOTES

- 3/4" 1.50" Standard steel with plastic cap stamped 1.5.8795
 - 1/2" 1.24" Standard steel with plastic cap stamped 1.5.8795
 - 3/4" Standard rubber found with cap stamped 1.5.8795
 - 1/2" Standard rubber found with cap stamped 1.5.8795
1. Refer to the plat for a complete listing of recorded easements and other recorded information.