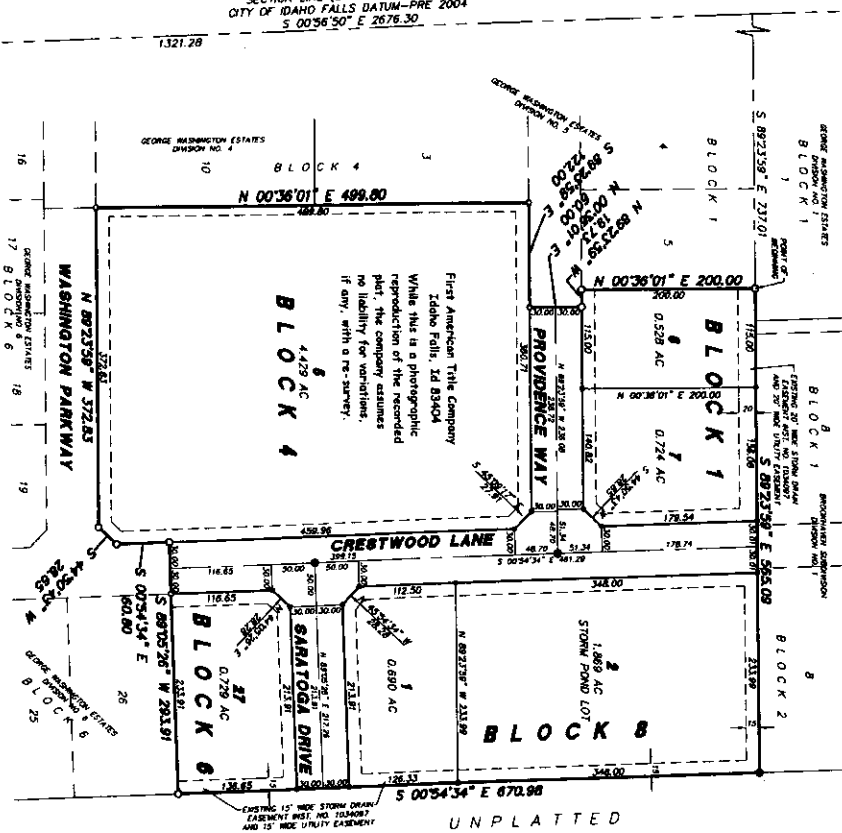


GEORGE WASHINGTON ESTATES

DIVISION NO. 7
 AN ADDITION TO THE CITY OF IDAHO FALLS,
 BONNEVILLE COUNTY, IDAHO
 INCLUDING A REPLAT OF LOT 4, BLOCK 4, GEORGE WASHINGTON ESTATES, DIVISION NO. 6 AND
 LOT 9, BLOCK 4, GEORGE WASHINGTON ESTATES, DIVISION NO. 6
 LYING IN THE NE 1/4 OF SECTION 33 T2N R39E B1M

SECTION LINE (BASIS OF BEARING)
 CITY OF IDAHO FALLS DATUM—PRE 2004
 S 00°36'50" E 2076.30



First American Title Company
 Idaho Falls, Id 83404
 While this is a photographic
 reproduction of the recorded
 plat, the company assumes
 no liability for variations,
 if any, with a re-survey.

LEGEND & NOTES

- 5/8" x 3/32" Sheet metal set with plastic cap stamped L.S. 8775
 - 1/2" x 1/4" Sheet metal set with plastic cap stamped L.S. 8775
 - 5/8" Sheet metal found with cap stamped L.S. 8775
 - 1/2" Sheet metal found with cap stamped L.S. 8775
- A Sheet iron with utility easement is hereby granted along all road frontages within each
 15' utility easement; are not made unless noted otherwise.

ROUND BRASS CAP
 CENTER OF B.M.
 CAP BY L.S. 971
 INSTR. NO. 499925

ROUND BRASS CAP
 CENTER OF B.M.
 CAP BY L.S. 971
 INSTR. NO. 500235

