

# GLEN BLACK MOTEL ADDITION

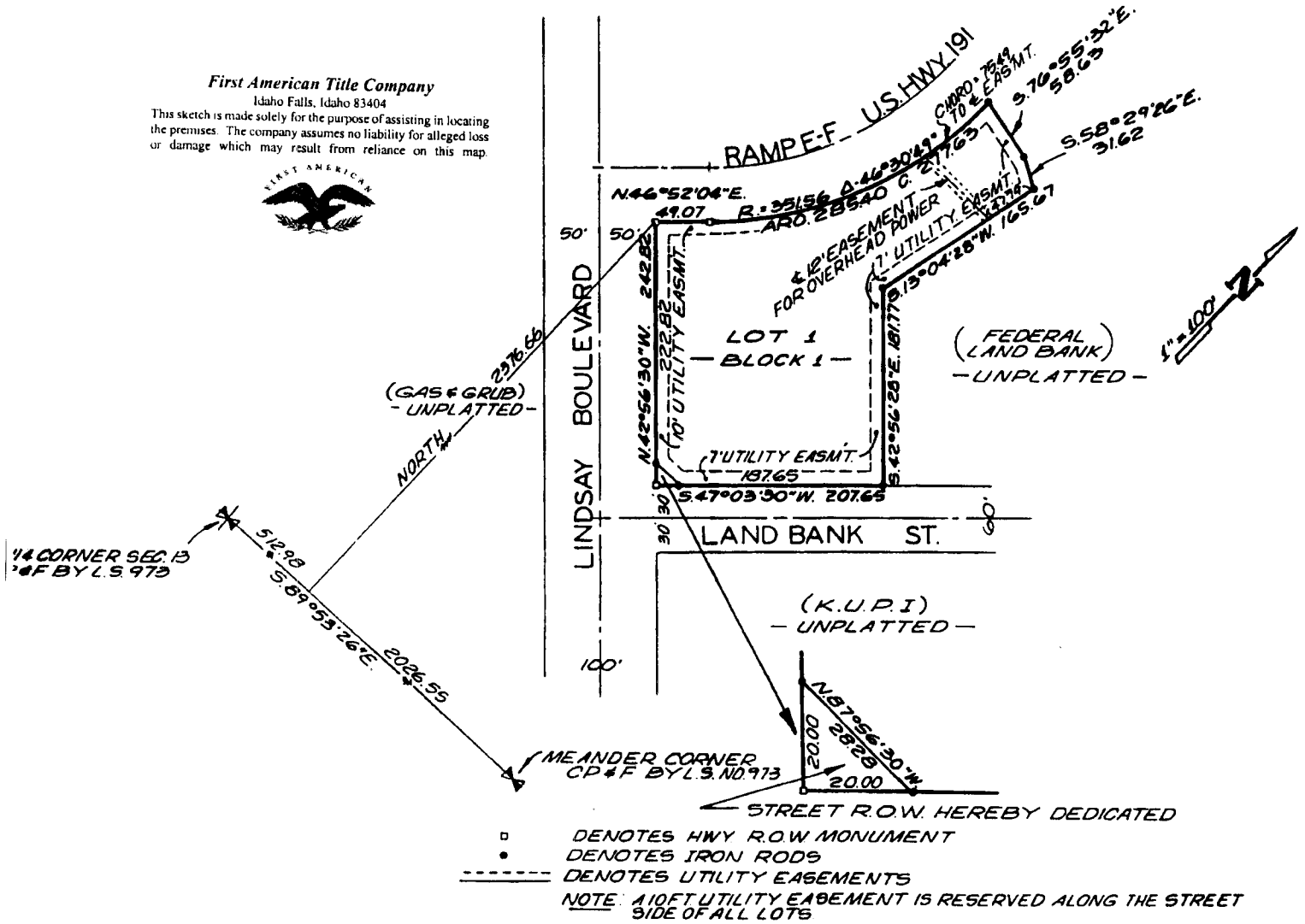
AN ADDITION TO THE CITY OF IDAHO FALLS, BONNEVILLE COUNTY, IDAHO  
BEING A PORTION OF THE S. E. 1/4 OF SECTION 13 T. 2N. R. 37, E.B.M.

## BOUNDARY DESCRIPTION

Beginning at a point that is S.89°53'26"E. 512.98 feet along the section line and North 2376.66 feet from the South Quarter Corner of Section 13, Township 2 North, Range 37 East of the Boise Meridian; running thence N.46°52'04"E. 49.07 feet to a point of curve with a radius of 351.56 feet; thence to the left along said curve 285.40 feet; thence S.76°55'32"E. 58.63 feet; thence S.58°29'26"E. 31.62 feet; thence S.13°04'28"W. 165.67 feet; thence S.42°56'28"E. 181.77 feet; thence S.47°03'30"W. 207.65 feet; thence N.42°56'30"W. 242.82 feet.

Contains 1.48 acres

**First American Title Company**  
Idaho Falls, Idaho 83404  
This sketch is made solely for the purpose of assisting in locating the premises. The company assumes no liability for alleged loss or damage which may result from reliance on this map.



- DENOTES HWY R.O.W MONUMENT
  - DENOTES IRON RODS
  - DENOTES UTILITY EASEMENTS
- NOTE: 10 FT. UTILITY EASEMENT IS RESERVED ALONG THE STREET SIDE OF ALL LOTS