

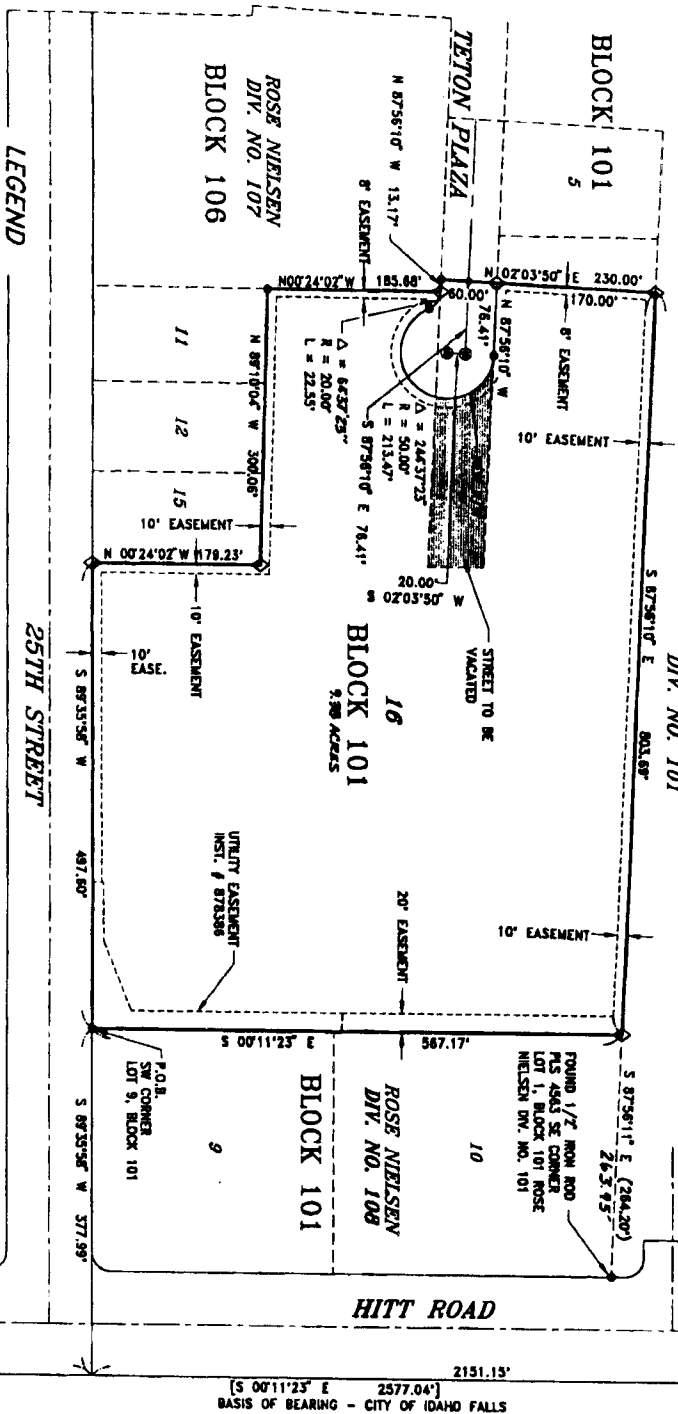
GRAND TETON ADDITION

DIVISION NO. 1

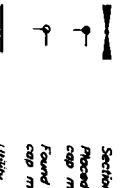
AN ADDITION TO THE CITY OF IDAHO FALLS, BONNEVILLE COUNTY, IDAHO
 BEING A REPLAT OF PART OF LOT 6 AND ALL OF LOTS 7 & 8 IN BLOCK 101 AND
 ALL OF LOTS 10, 13 & 14 BLOCK 106 OF ROSE NIELSEN DIV. NO. 107 TO THE
 CITY OF IDAHO FALLS, BONNEVILLE COUNTY, IDAHO AND AN UNPLATTED PARCEL
 ALL IN THE NE 1/4, SECTION 28, TOWNSHIP 2 NORTH, RANGE 38 EAST, B.M.

CITY OF IDAHO FALLS
 MONUMENT
 CORNER 537302

21
22
28
27



2151.15'
 [S 00°11'23" E 2577.04']
 BASIS OF BEARING - CITY OF IDAHO FALLS



LEGEND

Section control corners
 Placed 5/8" iron rod with cap marked P.L.S. 45631
 Found 5/8" iron rod with cap marked P.L.S. 45631
 Utility easements are 10' wide along the frontage of all lots. See yard and rear yard easements on other sheets shown.
 Monument to be placed after construction.
 Point of beginning

First American Title Company
 Idaho Falls, Idaho 83404

This sketch is made solely for the purpose of assisting in locating the premises. The company assumes no liability for alleged loss of damage which may result from reliance on this map



CITY OF IDAHO FALLS
 MONUMENT
 CORNER 500120

28
27

P.O.B.
 Street right-of-way to be vacated
 Found iron rod 5/8" iron rod marked P.L.S. 822
 REPLACED w/ 5/8" iron rod 4417W
 CAP MARKED P.L.S. 45631