



# GRANT M. BOWEN ADDITION

First American Title Company  
Idaho Falls, Idaho 83404

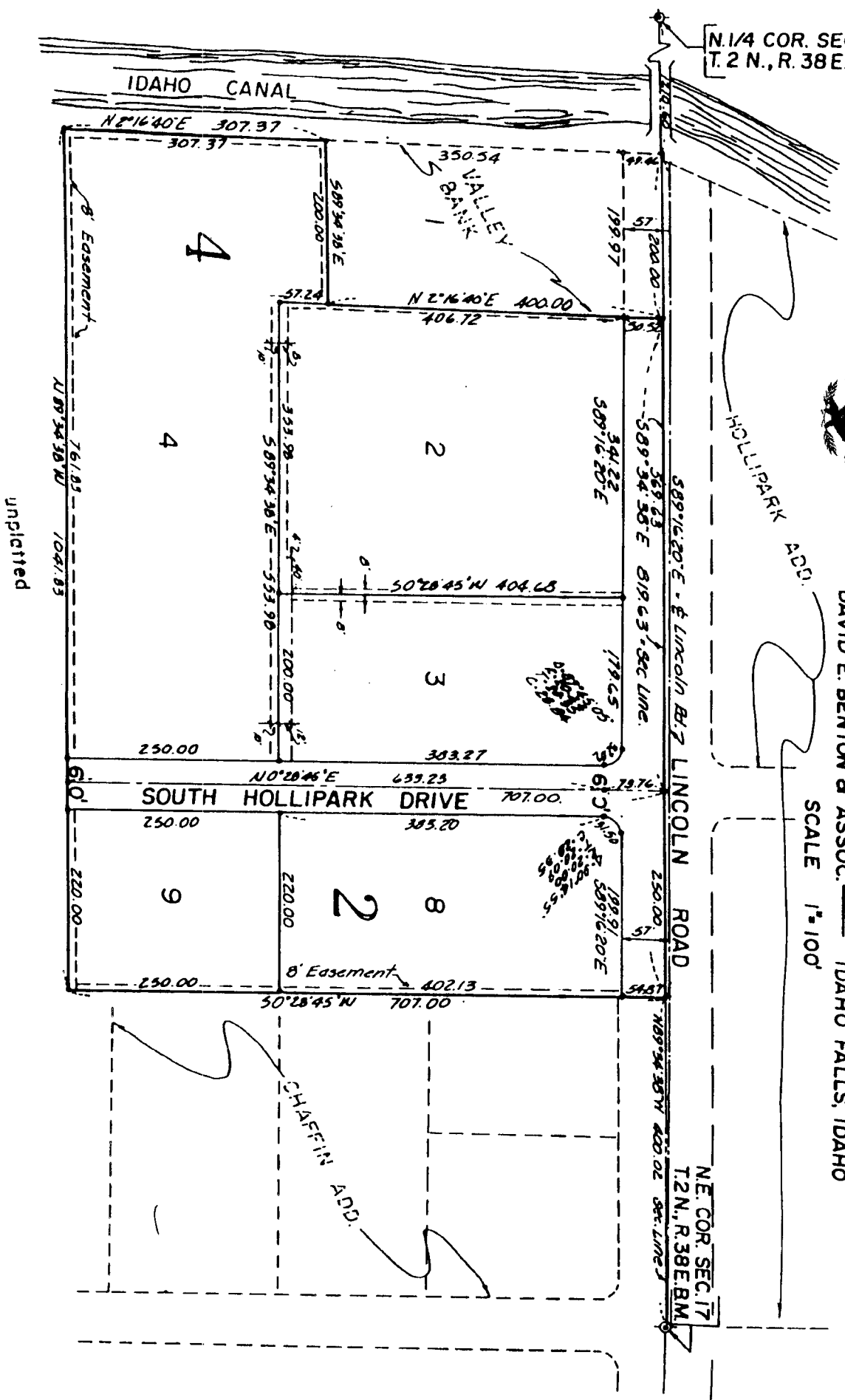
This sketch is made solely for the purpose of assisting in locating the premises. The company assumes no liability for alleged loss or damage which may result from reliance on this map.



DIVISION NO. 1  
CITY OF IDAHO FALLS, IDAHO  
PART OF THE NE 1/4 OF SEC. 17 T. 2 N., R. 38 E. B.M.  
DAVID E. BENTON & ASSOC. — IDAHO FALLS, IDAHO

SCALE 1" = 100'

N. 1/4 COR. SEC. 17  
T. 2 N., R. 38 E. B.M.



unplatted