

# THE FIRST AMENDED PLAT OF LOT 2, BLOCK 4 GRANT M. BOWEN ADDITION

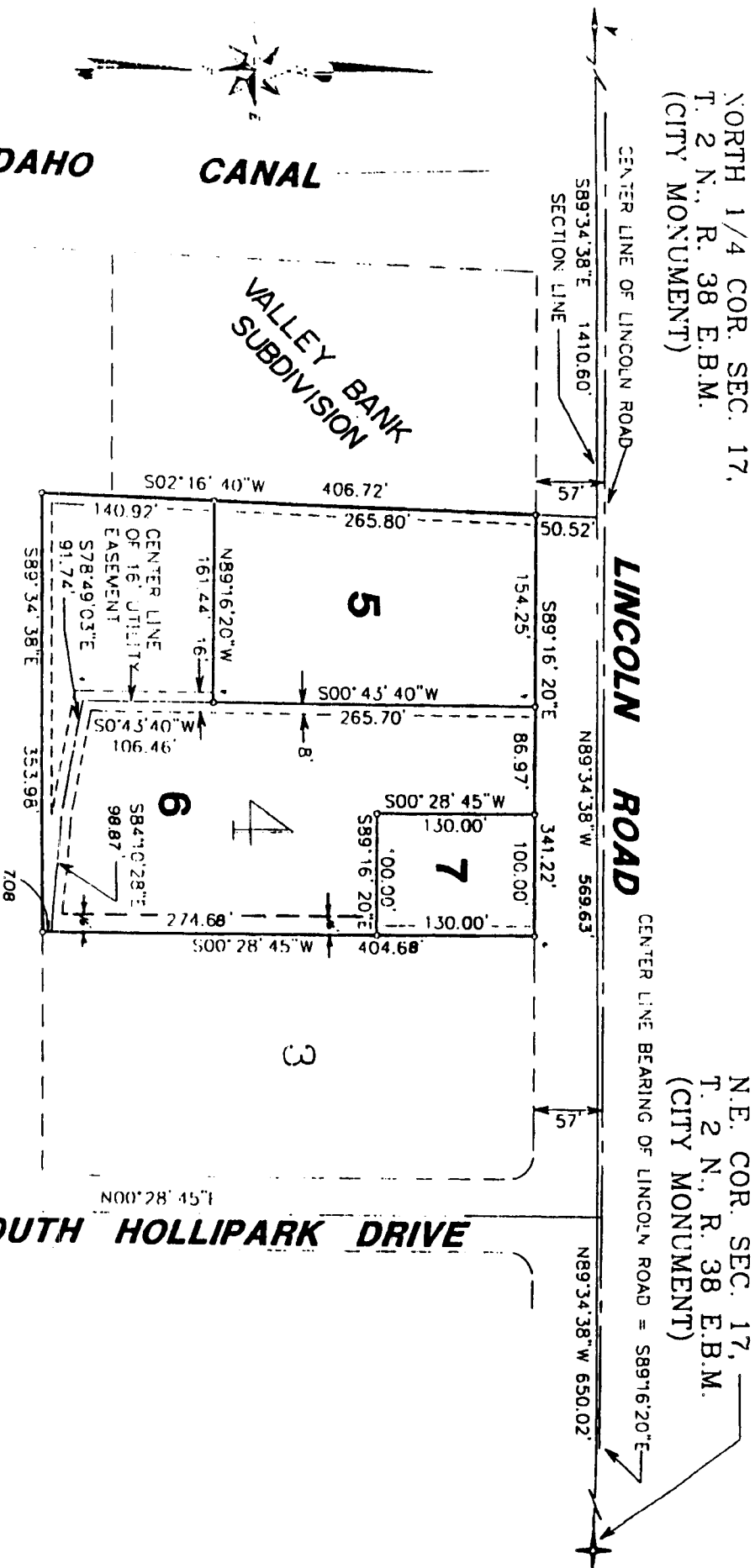
## DIVISION NO. 1

CITY OF IDAHO FALLS, IDAHO

PART OF THE N.E.1/4 OF SEC. 17, T.2N., R.38E.B.M.

NORTH 1/4 COR. SEC. 17,  
T. 2 N., R. 38 E.B.M.  
(CITY MONUMENT)

N.E. COR. SEC. 17,  
T. 2 N., R. 38 E.B.M.  
(CITY MONUMENT)



First American Title Company  
Idaho Falls, Idaho 83404

This sketch is made solely for the purpose of assisting in locating the premises. The company assumes no liability for alleged loss or damage which may result from reliance on this map.

