

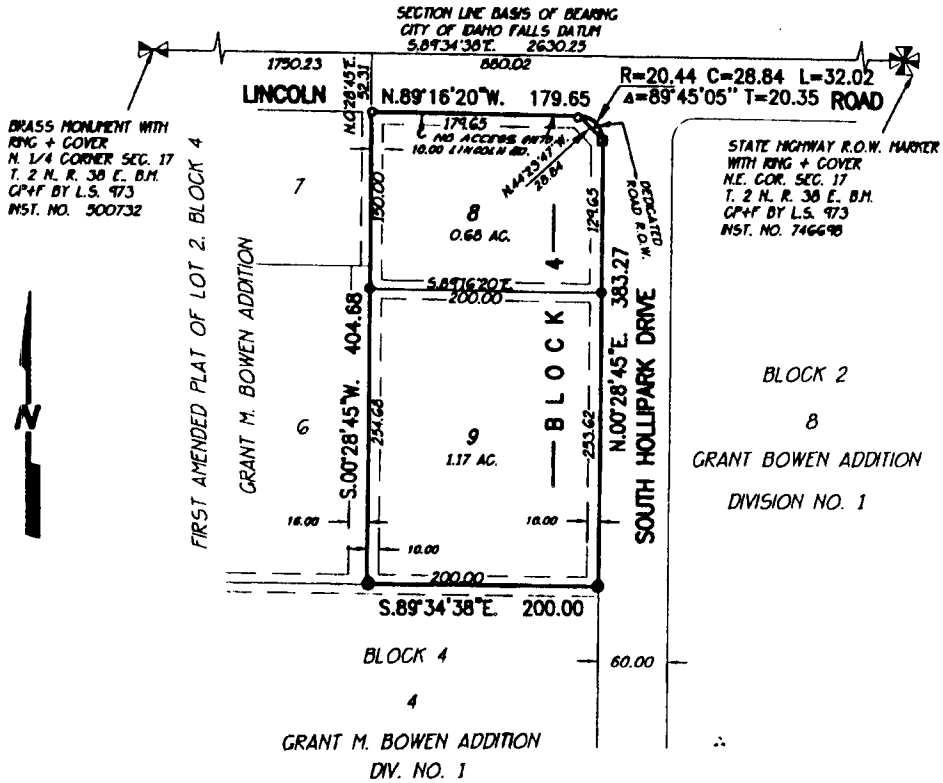
# THE SECOND AMENDED PLAT OF GRANT M. BOWEN ADDITION DIVISION NO. 1

AN ADDITION TO THE CITY OF IDAHO FALLS, BONNEVILLE COUNTY, IDAHO  
BEING A REPLAT OF LOT 3, BLOCK 4 GRANT M. BOWEN ADDITION, DIVISION NO. 1  
IN THE N.E. 1/4 N.E. 1/4, SECTION 17, T. 2 N., R. 38 E., B.M.

First American Title Company

Idaho Falls, Idaho 83404

This sketch is made solely for the purpose of assisting in locating the premises. The company assumes no liability for alleged loss or damage which may result from reliance on this map.



### LEGEND & NOTES

- 5/8" x 30" Steel Re-bar set with plastic cap stamped L.S.8795
- 1/2" x 24" Steel Re-bar set with plastic cap stamped L.S.8795
- 1/2" Steel Re-bar found with no cap
- Chiseled "X" in fire hydrant

--- A Ten foot wide Utility Easement is hereby granted along all road frontages within each lot. All other easements are Eight feet wide unless otherwise noted.