

GreenOak Meadow

DIVISION NO. 1

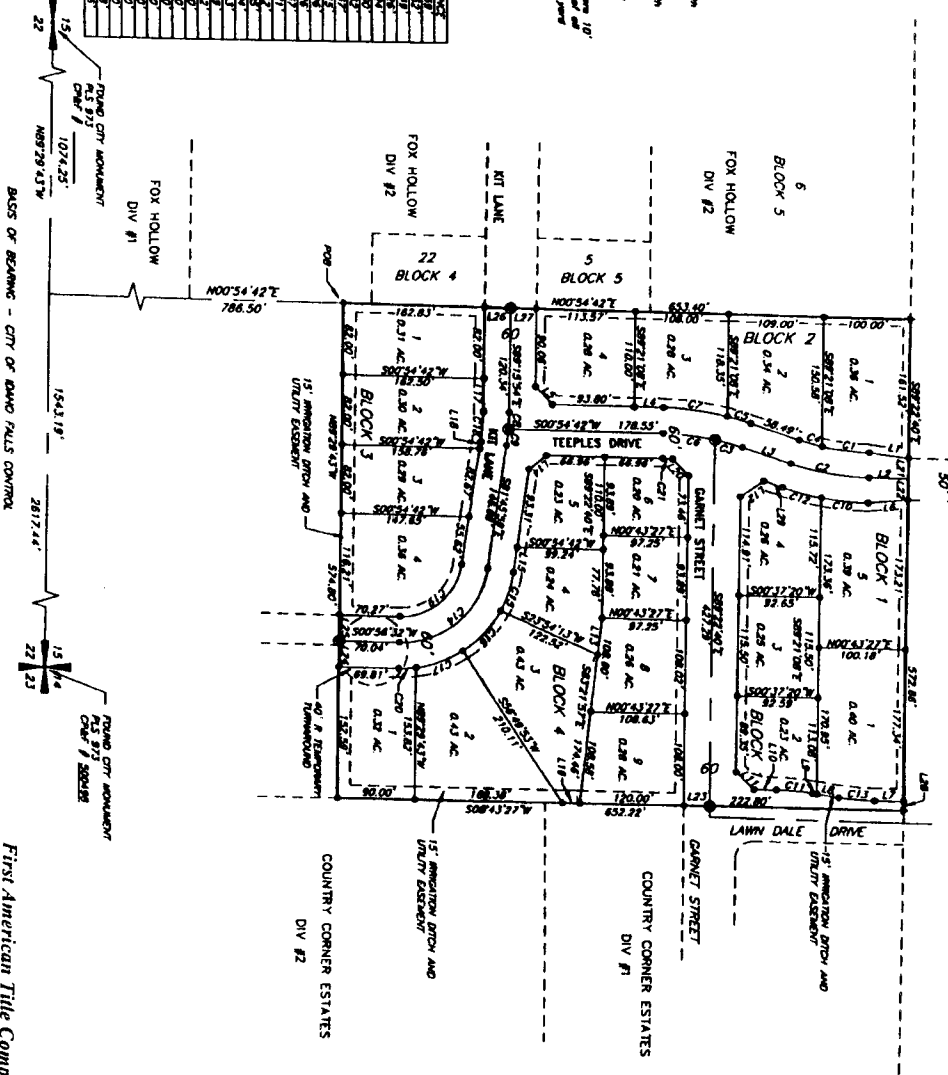
BONNEVILLE COUNTY, IDAHO
 PART OF THE SECTION 15, T2N, R38E, B.M.
 LAWN DALE ESTATES DIV #2
 LAWN DALE ESTATES DIV #1



LEGEND

- Section corner corners
- Section 3/4" iron rod with cap marked P.L.S. 0583
- Revised 1/2" iron rod with cap marked P.L.S. 0583
- Found iron nail P.S. 827
- Public utility easements are 10' wide unless the coverage of all utility lines is shown and are not shown on this plan.
- As shown to be placed in the construction.
- POB Point of Beginning

LINE	DESCRIPTION	DISTANCE
L1	461.51' S 89° 51' 00" W	461.51
L2	461.51' S 89° 51' 00" W	461.51
L3	461.51' S 89° 51' 00" W	461.51
L4	461.51' S 89° 51' 00" W	461.51
L5	461.51' S 89° 51' 00" W	461.51
L6	461.51' S 89° 51' 00" W	461.51
L7	461.51' S 89° 51' 00" W	461.51
L8	461.51' S 89° 51' 00" W	461.51
L9	461.51' S 89° 51' 00" W	461.51
L10	461.51' S 89° 51' 00" W	461.51
L11	461.51' S 89° 51' 00" W	461.51
L12	461.51' S 89° 51' 00" W	461.51
L13	461.51' S 89° 51' 00" W	461.51
L14	461.51' S 89° 51' 00" W	461.51
L15	461.51' S 89° 51' 00" W	461.51
L16	461.51' S 89° 51' 00" W	461.51
L17	461.51' S 89° 51' 00" W	461.51
L18	461.51' S 89° 51' 00" W	461.51
L19	461.51' S 89° 51' 00" W	461.51
L20	461.51' S 89° 51' 00" W	461.51
L21	461.51' S 89° 51' 00" W	461.51
L22	461.51' S 89° 51' 00" W	461.51
L23	461.51' S 89° 51' 00" W	461.51
L24	461.51' S 89° 51' 00" W	461.51
L25	461.51' S 89° 51' 00" W	461.51
L26	461.51' S 89° 51' 00" W	461.51
L27	461.51' S 89° 51' 00" W	461.51
L28	461.51' S 89° 51' 00" W	461.51
L29	461.51' S 89° 51' 00" W	461.51
L30	461.51' S 89° 51' 00" W	461.51



LINE	BEARING	DISTANCE	BEARING	DISTANCE	BEARING	DISTANCE
C1	107° 42' 25"	1074.25'	154° 19'	1543.19'	287° 24'	2872.44'
C2	107° 42' 25"	1074.25'	154° 19'	1543.19'	287° 24'	2872.44'
C3	107° 42' 25"	1074.25'	154° 19'	1543.19'	287° 24'	2872.44'
C4	107° 42' 25"	1074.25'	154° 19'	1543.19'	287° 24'	2872.44'
C5	107° 42' 25"	1074.25'	154° 19'	1543.19'	287° 24'	2872.44'
C6	107° 42' 25"	1074.25'	154° 19'	1543.19'	287° 24'	2872.44'
C7	107° 42' 25"	1074.25'	154° 19'	1543.19'	287° 24'	2872.44'
C8	107° 42' 25"	1074.25'	154° 19'	1543.19'	287° 24'	2872.44'
C9	107° 42' 25"	1074.25'	154° 19'	1543.19'	287° 24'	2872.44'
C10	107° 42' 25"	1074.25'	154° 19'	1543.19'	287° 24'	2872.44'
C11	107° 42' 25"	1074.25'	154° 19'	1543.19'	287° 24'	2872.44'
C12	107° 42' 25"	1074.25'	154° 19'	1543.19'	287° 24'	2872.44'
C13	107° 42' 25"	1074.25'	154° 19'	1543.19'	287° 24'	2872.44'
C14	107° 42' 25"	1074.25'	154° 19'	1543.19'	287° 24'	2872.44'
C15	107° 42' 25"	1074.25'	154° 19'	1543.19'	287° 24'	2872.44'
C16	107° 42' 25"	1074.25'	154° 19'	1543.19'	287° 24'	2872.44'
C17	107° 42' 25"	1074.25'	154° 19'	1543.19'	287° 24'	2872.44'
C18	107° 42' 25"	1074.25'	154° 19'	1543.19'	287° 24'	2872.44'
C19	107° 42' 25"	1074.25'	154° 19'	1543.19'	287° 24'	2872.44'
C20	107° 42' 25"	1074.25'	154° 19'	1543.19'	287° 24'	2872.44'

First American Title Company
 Idaho Falls, Idaho 83404
 This sketch is made solely for the purpose of assisting in locating the premises. The company assumes no liability for alleged loss or damage which may result from reliance on this map.

