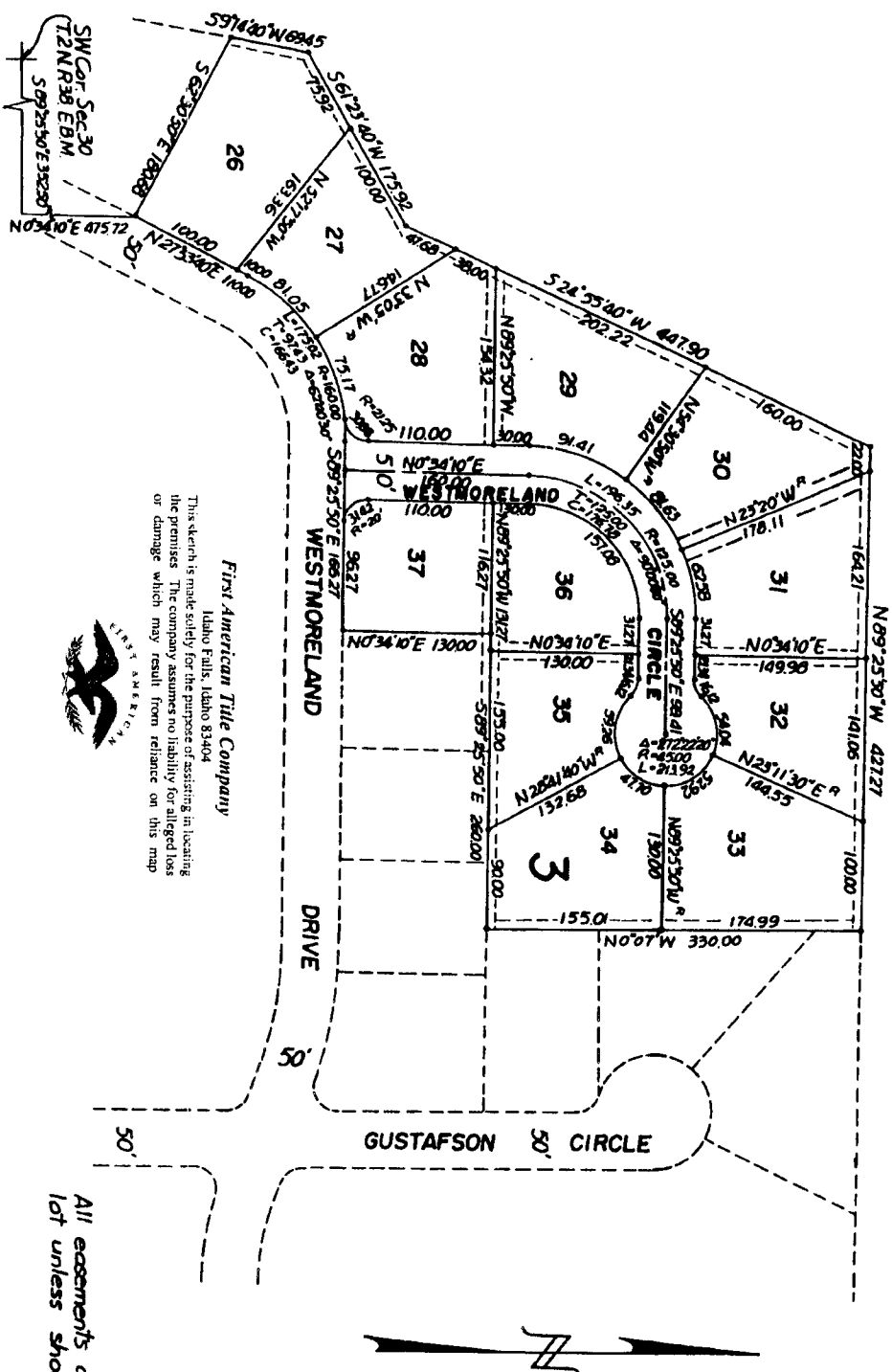


FIRST AMENDED PLAT

(LOTS 12 TO 16 INCLUSIVE OF BLOCK 3)
GUSTAFSON PARK ADDITION
DIVISION NO. 182

TO THE CITY OF IDAHO FALLS IDAHO
 Part of
 SW 1/4 SW 1/4 SEC. 30 T.2N. R38 E.B.M.



First American Tile Company
 Idaho Falls, Idaho 83404
 This sketch is made solely for the purpose of assisting in locating the premises. The company assumes no liability for alleged loss or damage which may result from reliance on this map.



All easements are thru each lot unless shown otherwise.