

W. 1/4 CORNER SEC. 1
T. 1 N. R. 38 E. B. M.

H & H ACRES

DIVISION NO. 2

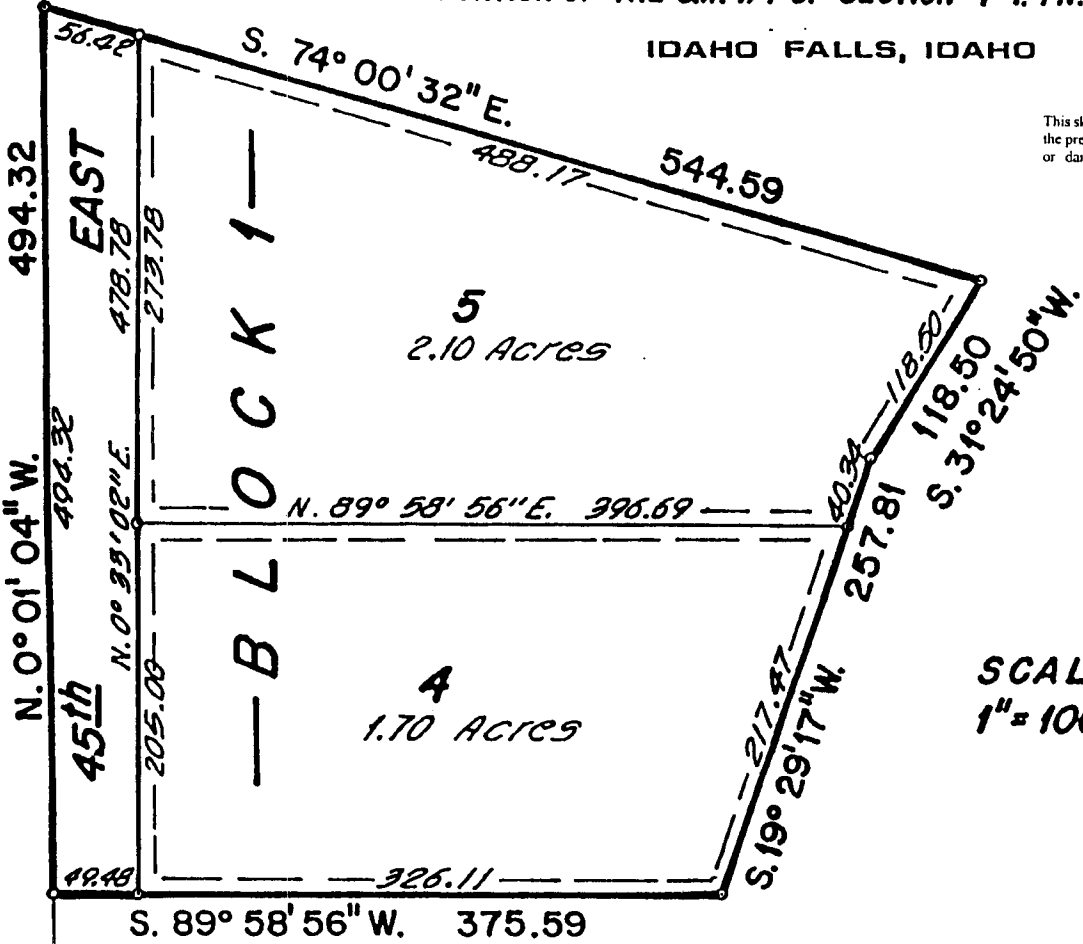
BONNEVILLE COUNTY, IDAHO

A PORTION OF THE S.W. 1/4 OF SECTION 1 T. 1 N. R. 38 E. B. M.

IDAHO FALLS, IDAHO

First American Title Company
Idaho Falls, Idaho 83404

This sketch is made solely for the purpose of assisting in locating the premises. The company assumes no liability for alleged loss or damage which may result from reliance on this map



SCALE
1" = 100' N

NOTES

○ Designates Iron Rods

--- Utility Easements Ten Feet Wide around each lot.

S.W. CORNER SEC. 1
T. 1 N. R. 38 E. B. M.

N. 0° 01' 04" W. 1107.22

N. 0° 01' 04" W. 494.32

494.32 EAST

56.28

478.78

273.78

488.17

544.59

118.50

118.50

257.81

217.87

257.81

326.11

375.59

494.32

494.32

478.78

273.78

488.17

544.59

118.50

118.50

257.81

217.87

257.81

326.11

375.59

494.32

494.32

478.78

273.78

488.17

544.59

118.50

118.50

257.81

217.87

257.81

326.11

375.59

494.32

494.32

478.78

273.78

488.17

544.59

118.50

118.50

257.81

217.87

257.81

326.11

375.59

494.32

494.32

478.78

273.78

488.17

544.59

118.50

118.50

257.81

217.87

257.81

326.11

375.59

494.32

494.32

478.78

273.78

488.17

544.59

118.50

118.50

257.81

217.87

257.81

326.11

375.59

494.32

494.32

478.78

273.78

488.17

544.59

118.50

118.50

257.81

217.87

257.81

326.11

375.59

494.32

494.32

478.78

273.78

488.17

544.59

118.50

118.50

257.81

217.87

257.81

326.11

375.59

494.32

494.32

478.78

273.78

488.17

544.59

118.50

118.50

257.81

217.87

257.81

326.11

375.59

494.32

494.32

478.78

273.78

488.17

544.59

118.50

118.50

257.81

217.87

257.81

326.11

375.59

494.32

494.32

478.78

273.78

488.17

544.59

118.50

118.50

257.81

217.87

257.81

326.11

375.59

494.32

494.32

478.78

273.78

488.17

544.59

118.50

118.50

257.81

217.87

257.81

326.11

375.59

494.32

494.32

478.78

273.78

488.17

544.59

118.50

118.50

257.81

217.87

257.81

326.11

375.59

494.32

494.32

478.78

273.78

488.17

544.59

118.50

118.50

257.81

217.87

257.81

326.11

375.59

494.32

494.32

478.78

273.78

488.17

544.59

118.50

118.50

257.81

217.87

257.81

326.11

375.59

494.32

494.32

478.78

273.78

488.17

544.59

118.50

118.50

257.81

217.87

257.81

326.11

375.59

494.32

494.32

478.78

273.78

488.17

544.59

118.50

118.50

257.81

217.87

257.81

326.11

375.59

494.32

494.32

478.78

273.78

488.17

544.59

118.50

118.50

257.81

217.87

257.81

326.11

375.59

494.32

494.32

478.78

273.78

488.17

544.59

118.50

118.50

257.81

217.87

257.81

326.11

375.59

494.32

494.32

478.78

273.78

488.17

544.59

118.50

118.50

257.81

217.87

257.81

326.11

375.59

494.32

494.32

478.78

273.78

488.17

544.59

118.50

118.50

257.81

217.87

257.81