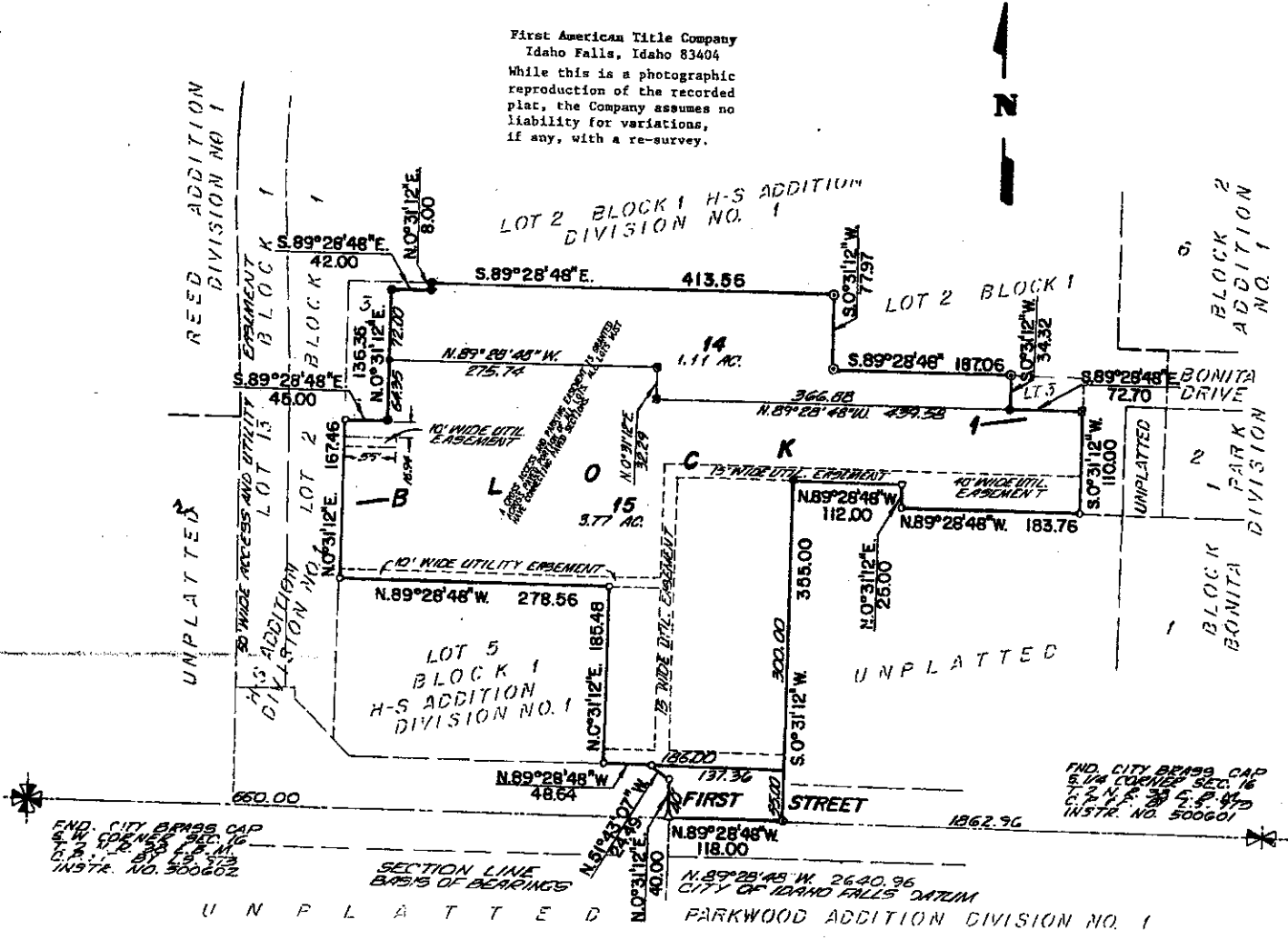


H-S ADDITION DIVISION NO. 2

TO THE CITY OF IDAHO FALLS, BONNEVILLE COUNTY, IDAHO

BEING PART OF THE S.W. 1/4 S.W. 1/4 SECTION 16 T.2 N. R.38 E. B.M.
WHICH INCLUDES A RE-PLAT OF LOT 4 AND PART OF 2 & 3 BLOCK 1
H-S ADDITION DIVISION NO. 1

First American Title Company
Idaho Falls, Idaho 83404
While this is a photographic reproduction of the recorded plat, the Company assumes no liability for variations, if any, with a re-survey.



END. CITY BRASS CAP
5/8" CORNER SEC. 16
C.P. 1-2-23 BY L.S. 8795
INST. NO. 300602

END. CITY BRASS CAP
5/8" CORNER SEC. 16
C.P. 1-2-23 BY L.S. 8795
INST. NO. 300601

SECTION LINE
B.P.S.'S OF BEARINGS

N.89°28'48"W. 2640.96
CITY OF IDAHO FALLS DATUM

U N P L A T T E D PARKWOOD ADDITION DIVISION NO. 1

LEGEND & NOTES

- 5/8" x 30" Steel rebar set with plastic cap stamped L.S.8795
- 5/8" Steel rebar found with caps stamped L.S.8795
- 1/2" x 24" Steel rebar set with plastic cap stamped L.S.8795
- 1/2" Steel rebar found with caps stamped L.S.8795
- ⊙ Survey spike with washer stamped L.S.8795 set in concrete/asphalt
- ⊞ Chiseled X in concrete
- △ Magnetic nail found

--- A 15 foot wide Utility Easement is hereby granted along all road frontages within each lot. All other utility easements are 10 feet wide unless noted otherwise.