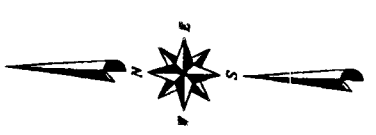


N Quarter Corner Sec. 3,
T.2N., R.38E.B.M.
CP&F INST. #781970

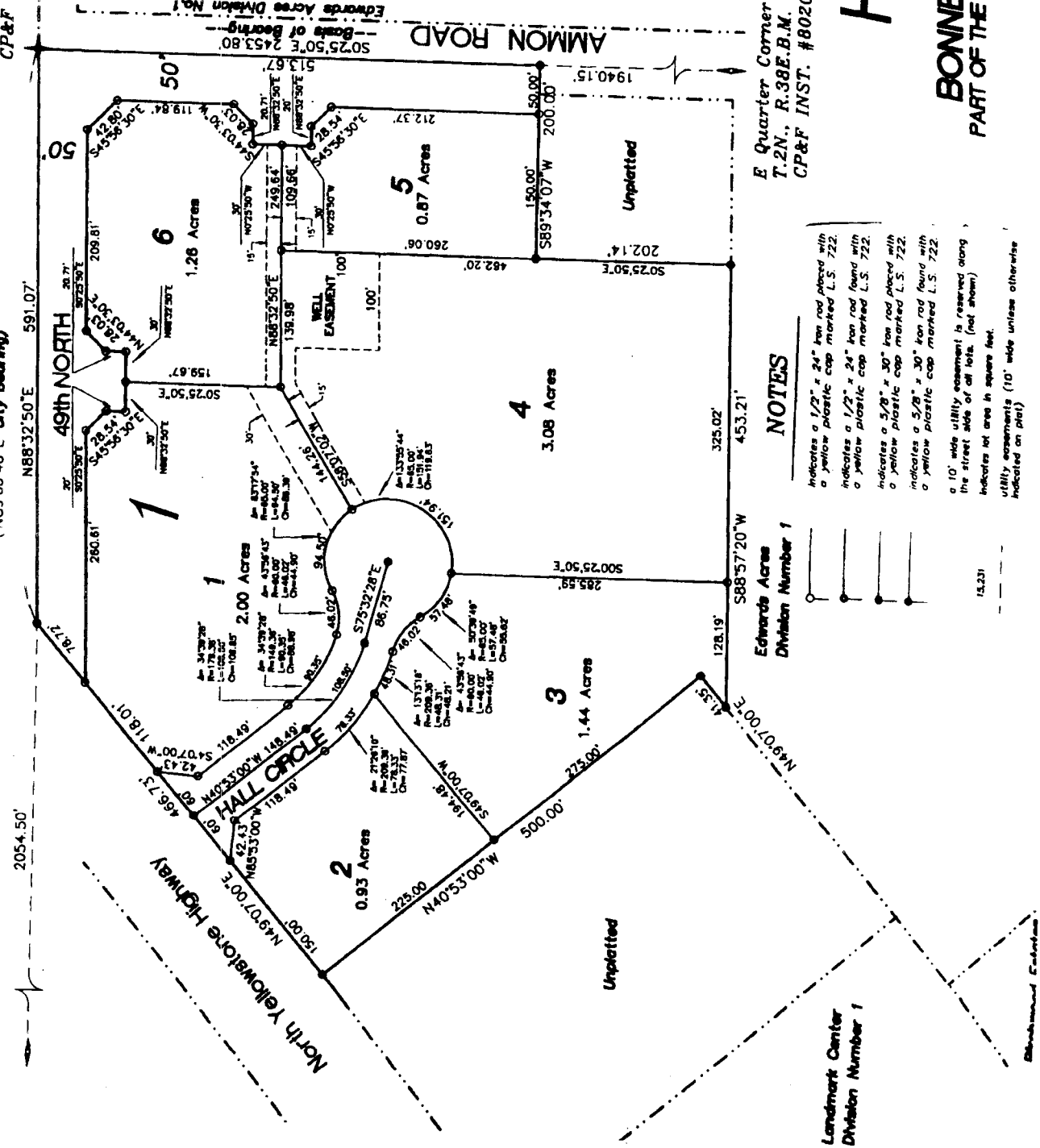
Unplatted
(N89°06'46"E City Bearing)
N88°32'50"E 591.07'

NE COR. SEC. 3,
T.2N., R.38E.B.M.
CP&F INST. #781971



Unplatted

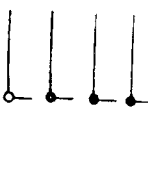
First American Title Company
Idaho Falls, Idaho 83404
This sketch is made solely for the purpose of assisting in locating
the premises. The company assumes no liability for alleged loss
or damage which may result from reliance on this map



E Quarter Corner Sec. 3,
T.2N., R.38E.B.M.
CP&F INST. #802076

NOTES

- Indicates a 1/2" x 24" iron rod placed with a yellow plastic cap marked L.S. 722.
- Indicates a 1/2" x 24" iron rod found with a yellow plastic cap marked L.S. 722.
- Indicates a 5/8" x 30" iron rod placed with a yellow plastic cap marked L.S. 722.
- Indicates a 5/8" x 30" iron rod found with a yellow plastic cap marked L.S. 722.
- a 10' wide utility easement is reserved along the street side of all lots. (not shown)
- Indicates lot area in square feet.
- Utility easements (10' wide unless otherwise indicated on plat)



Landmark Center
Division Number 1

Hall Acres

DIVISION NO. 1

BONNEVILLE COUNTY, IDAHO

PART OF THE NE 1/4 OF SECTION 3, T. 2 N., R. 38 E.B.M.

Bonneville County will not maintain roads until constructed to county standards and officially accepted. Private driveways will be constructed shown on the approved improvement drawings and driveway markers shall be maintained by owner of each lot.