

HALLMARK ESTATES DIVISION NO. 1 BONNEVILLE COUNTY, IDAHO

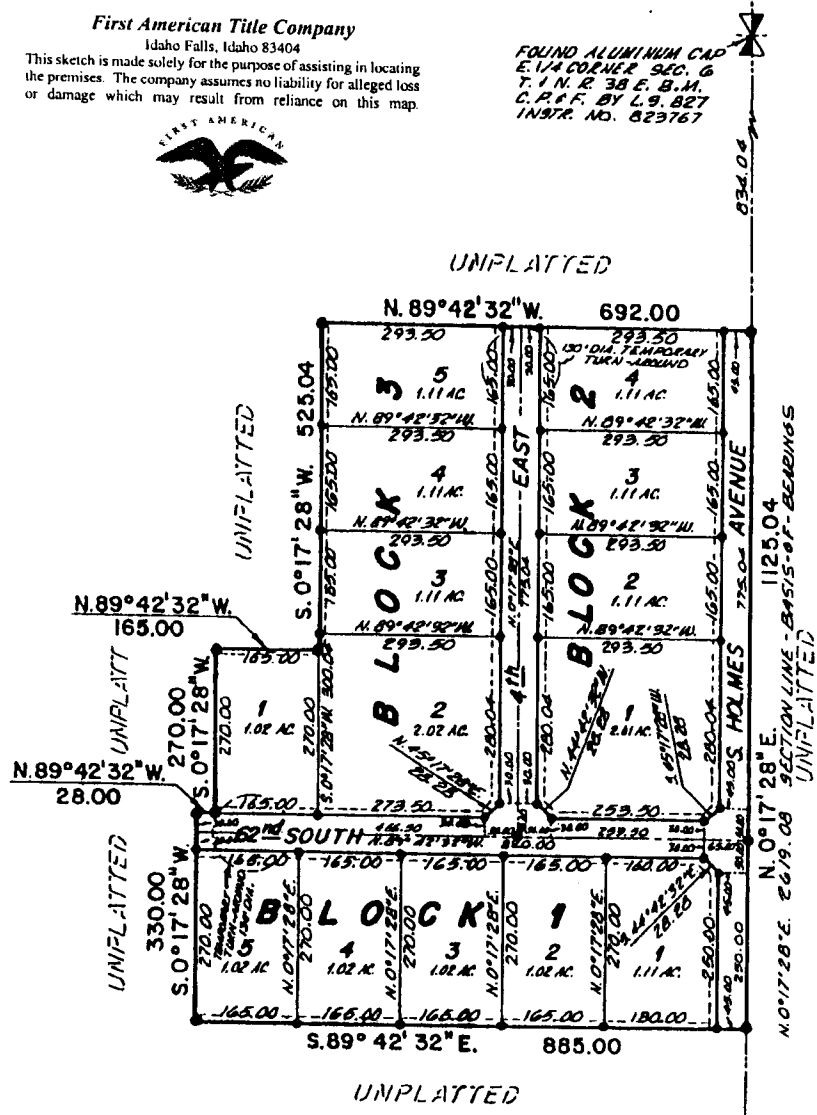
PART OF THE E. 1/2 S.E. 1/4 OF SECTION 6, T. 1 N., R. 38 E., B. M.

First American Title Company
Idaho Falls, Idaho 83404

This sketch is made solely for the purpose of assisting in locating the premises. The company assumes no liability for alleged loss or damage which may result from reliance on this map.



FOUND ALUMINUM CAP
E. 1/4 CORNER SEC. 6
T. 1 N. R. 38 E. B. M.
C.P.F. BY L.S. 827
INSTR. NO. 823767



LEGEND & NOTES

- 5/8" x 30" Steel Re-bar set with plastic cap stamped L.S.827
- 1/2" x 24" Steel Re-bar set with plastic cap stamped L.S.827
- 5/8" Steel Re-bar found with caps stamped 2.327
- 1/2" Steel Re-bar found with caps stamped 2.327

--- A Ten foot wide Utility Easement is hereby granted along all road frontages within each lot. All other easements are Eight foot wide unless otherwise noted.

The County will not maintain roads until constructed to County Standards and officially accepted.

Private driveway approaches will be constructed as shown on the approved improvement drawings on file in the office of the County Engineer and drainage swales shall be maintained by the lot owners.

Lots shown on this plat are included in a lighting district and will be assessed for the operation and maintenance.

Vehicle access onto S. Holmes Avenue will not be allowed from Lot 1, Block 1 or Lots 1 through 4, Block 2.

FOUND ALUMINUM CAP
S.E. CORNER SEC. 6
T. 1 N. R. 38 E. B. M.
C.P.F. BY L.S. 827
INSTR. NO. 566372