

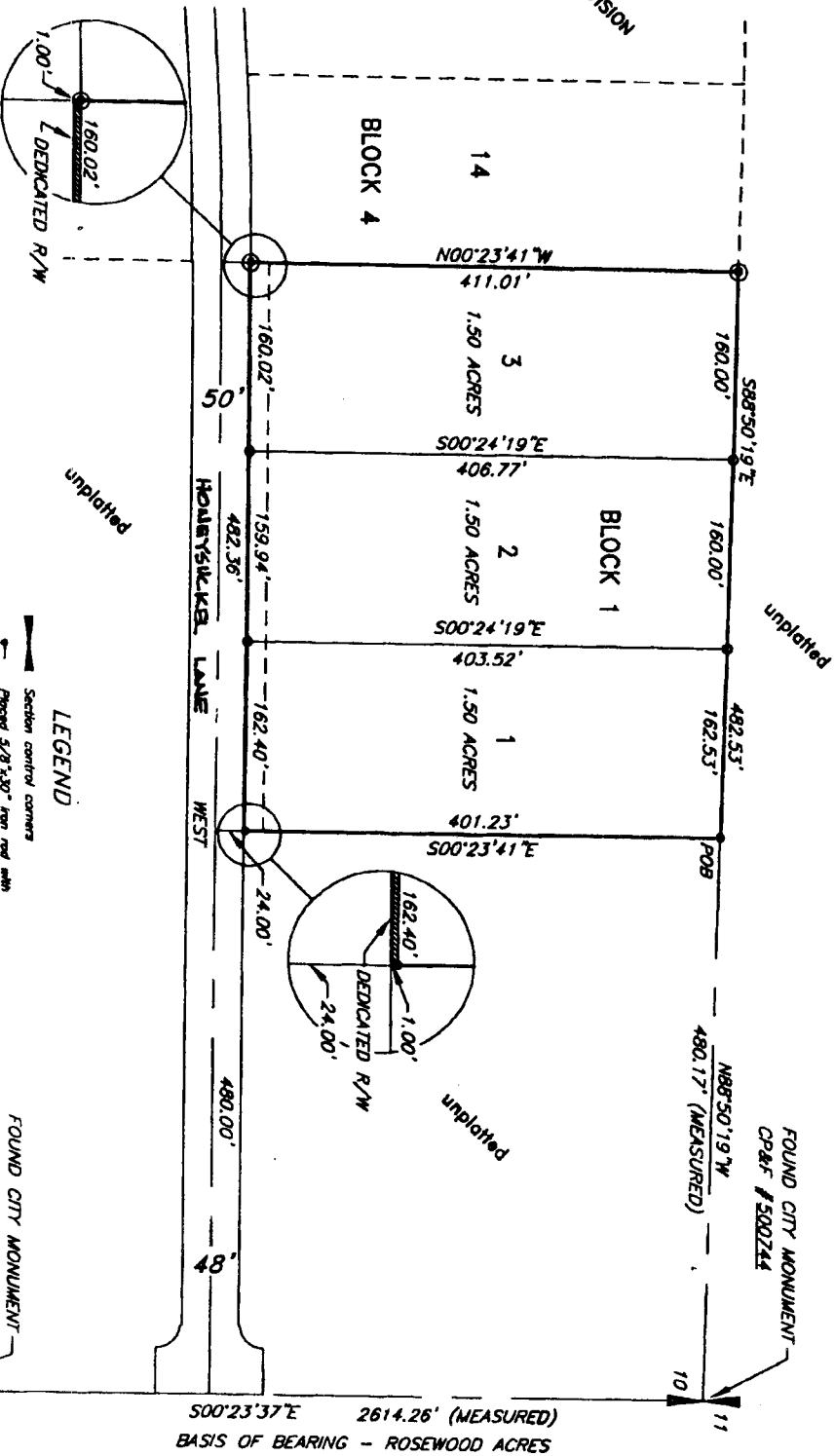
HANSEN ACRES

DIVISION NO. 1

TO BONNEVILLE COUNTY, IDAHO
PART OF THE SECTION 10, T. 2 N., R. 37 E., B.M.



ROSEWOOD ACRES SUBDIVISION
DIVISION NO. 7



LEGEND

- Section control corners
- Found 5/8" x 3/32" iron rod with cap marked P.L.S. 4583
- Found 1/2" x 24" iron rod with cap marked P.L.S. 4583
- Utility components are 15' wide along the footprint of all data
- POB Point of Beginning
- Found iron rod with cap marked L.S. 827

FOUND CITY MONUMENT
C.P.&F. #500236

FOUND CITY MONUMENT
C.P.&F. #500244



First American Title Company
Idaho Falls, Idaho 83404
This sketch is made solely for the purpose of assisting in locating the premises. The company assumes no liability for alleged loss or damage which may result from reliance on this map.

