

# HANSEN PALISADES SUBDIVISION

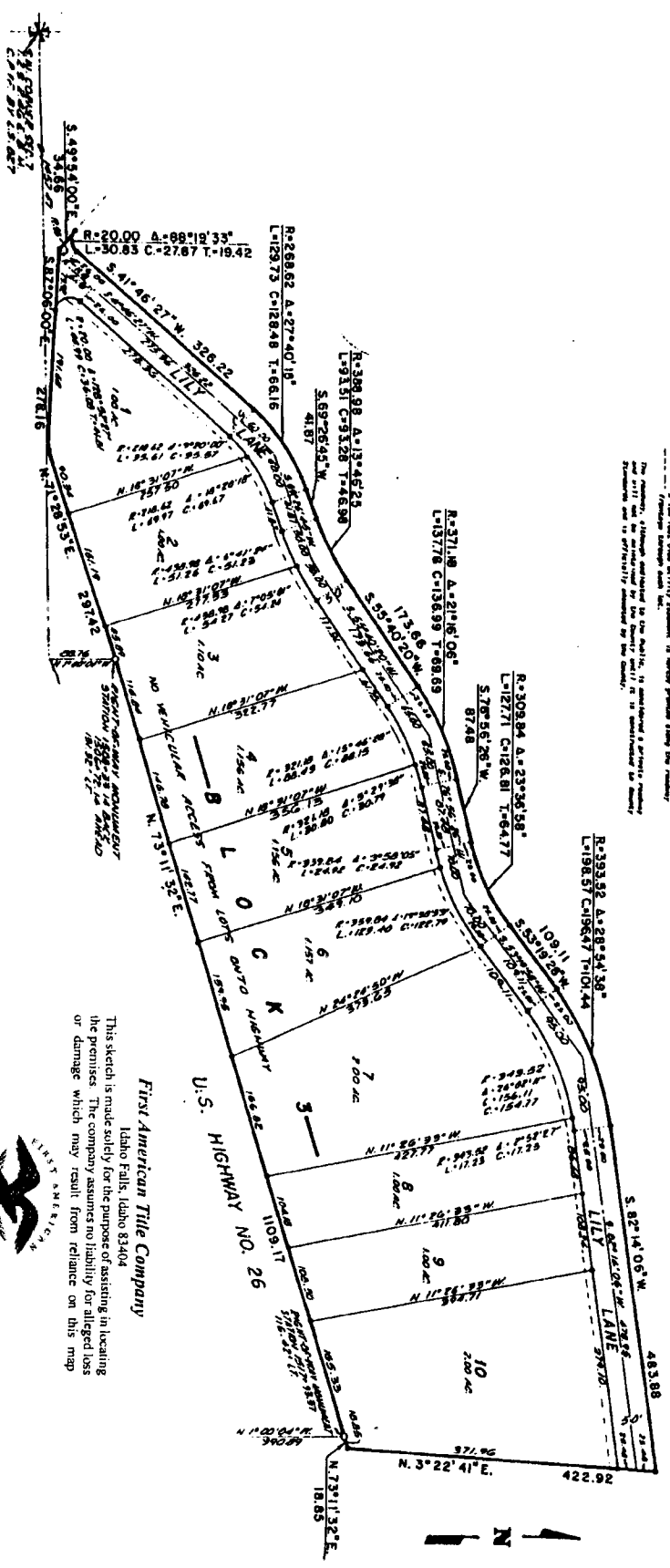
## DIVISION NO. 2

### BONNEVILLE COUNTY, IDAHO

BEING PART OF THE S 1/2 OF SECTION 7, T 2 S., R. 46 E., B. M.

**NOTES**

- 1. Boundary of "Old" road and utility poles are shown U.L. 404
- 2. The first real utility easement is shown parallel along the roadway.
- 3. The second utility easement is shown parallel along the roadway.
- 4. Although indicated by the title, it is understood a certain number of lots are to be reserved for the owner, it is understood as shown.



**First American Title Company**  
 Idaho Falls, Idaho 83404

This sketch is made solely for the purpose of assisting in locating the premises. The company assumes no liability for alleged loss or damage which may result from reliance on this map.

