

HARTWELL ACRES

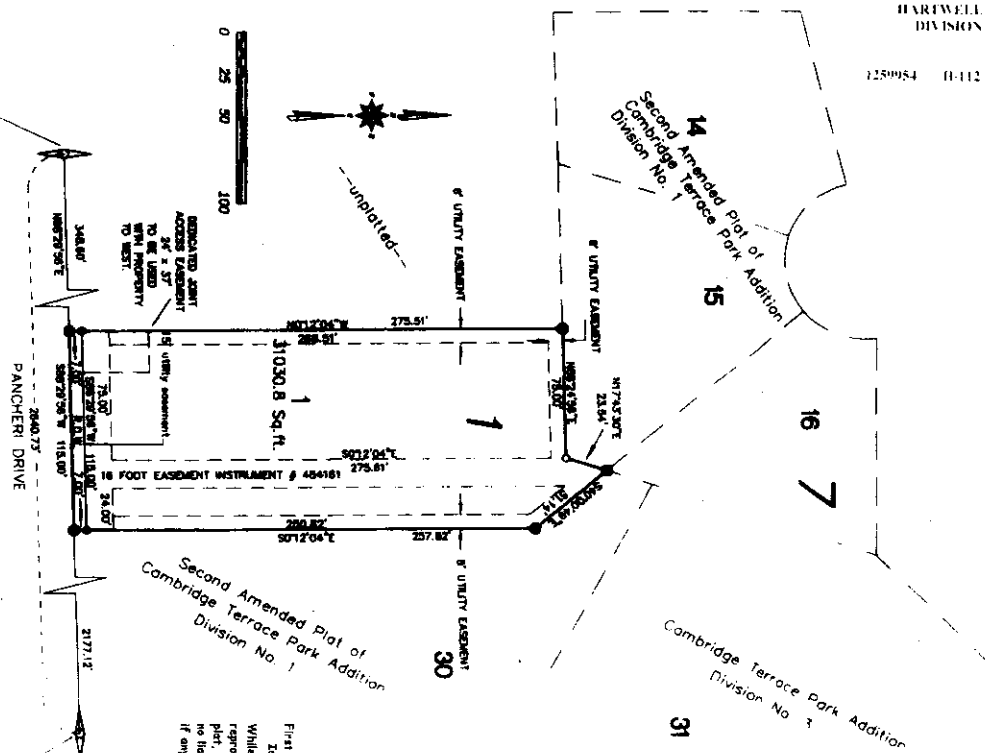
DIVISION NO. 1

TO THE CITY OF DAHO FALLS, BONNEVILLE COUNTY, IDAHO
INCLUDING A REPEAT OF A PORTION OF LOT 30 OF THE SECOND AMENDED PLAT OF

CAMBRIDGE TERRACE PARK ADDITION NO. 1
PART OF THE NW 1/4 OF SECTION 24, T. 2 N., R. 37 E.B.M.

HARTWELL ACRES
DIVISION NO. 1

2259954 B-112 4-19-2007



First American Title Company
Idaho Falls, Id 83404
While this is a photographic
reproduction of the recorded
plat, the company assumes
no liability for variations,
if any, with a re-survey.

West 1/4 Corner
Sec. 24 T. 2 N.
R. 37 E.B.M.
C.P. & E. #1218319

Section Line
--Basis of Bearing--
City of Idaho Falls
Datum Pre 2004

Center Section
Sec. 24 T. 2 N.
R. 37 E.B.M.
C.P. & E. #500492

NOTES

- Indicates a 1/2" x 3/4" iron rod placed with a yellow plastic cap marked L.S. 722.
- Indicates a 1/2" x 24" iron rod found
- Indicates a 5/8" x 30" iron rod placed with a yellow plastic cap marked L.S. 722.
- Indicates a 5/8" x 30" iron rod found
- a 15' wide utility easement is reserved along the street side of all lots.
- All other easements as shown.