

# FIRST AMENDED PLAT HATCH ADDITION DIVISION NO. 6 - BLOCK 9

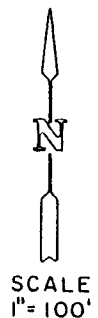
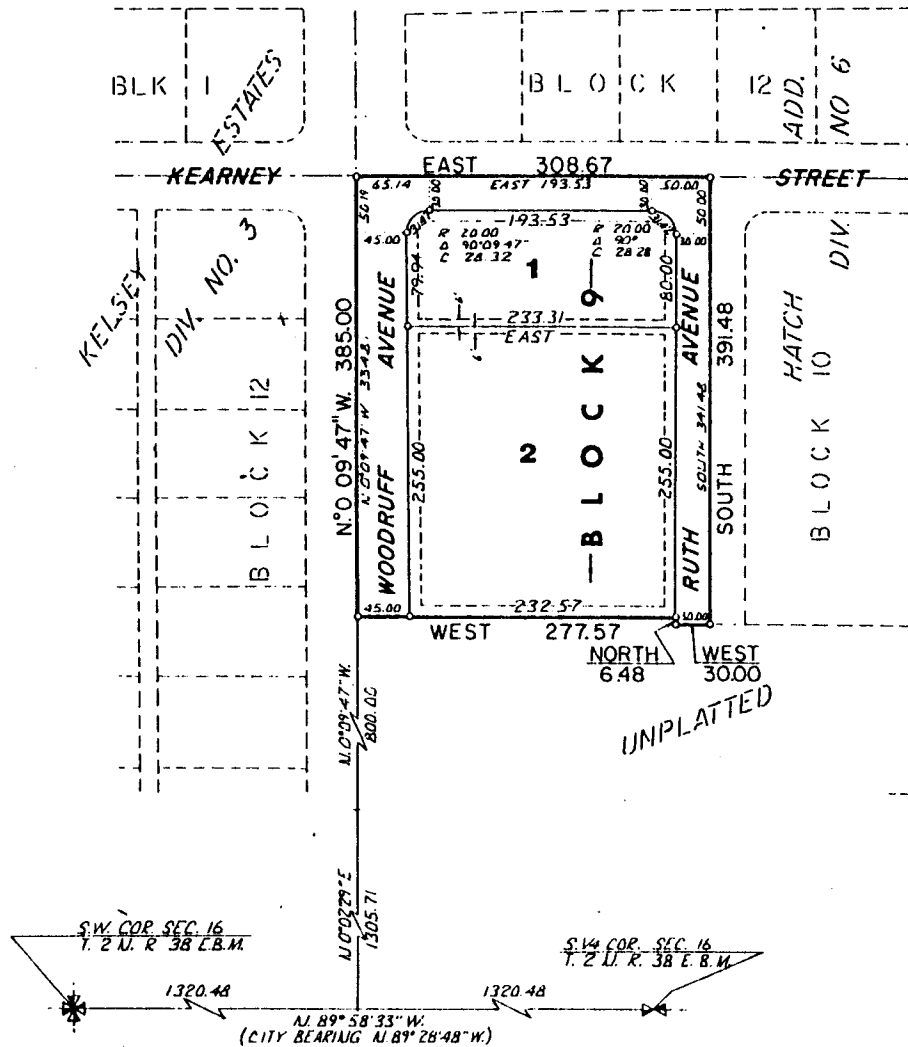
TO THE CITY OF  
IDAHO FALLS, BONNEVILLE COUNTY, IDAHO

A PORTION OF SEC. 16 T. 2 N., R. 38 E. B. M.

ELLSWORTH ENGINEERING, INC.  
IDAHO FALLS, IDAHO

While this is a photographic reproduction of the recorded plat, the Company assumes no liability for variations, if any, with a re-survey.

LAND TITLE CO.  
Idaho Falls, Idaho



• DESIGNATES IRON RODS  
----- EASEMENTS B' UNLESS OTHERWISE NOTED