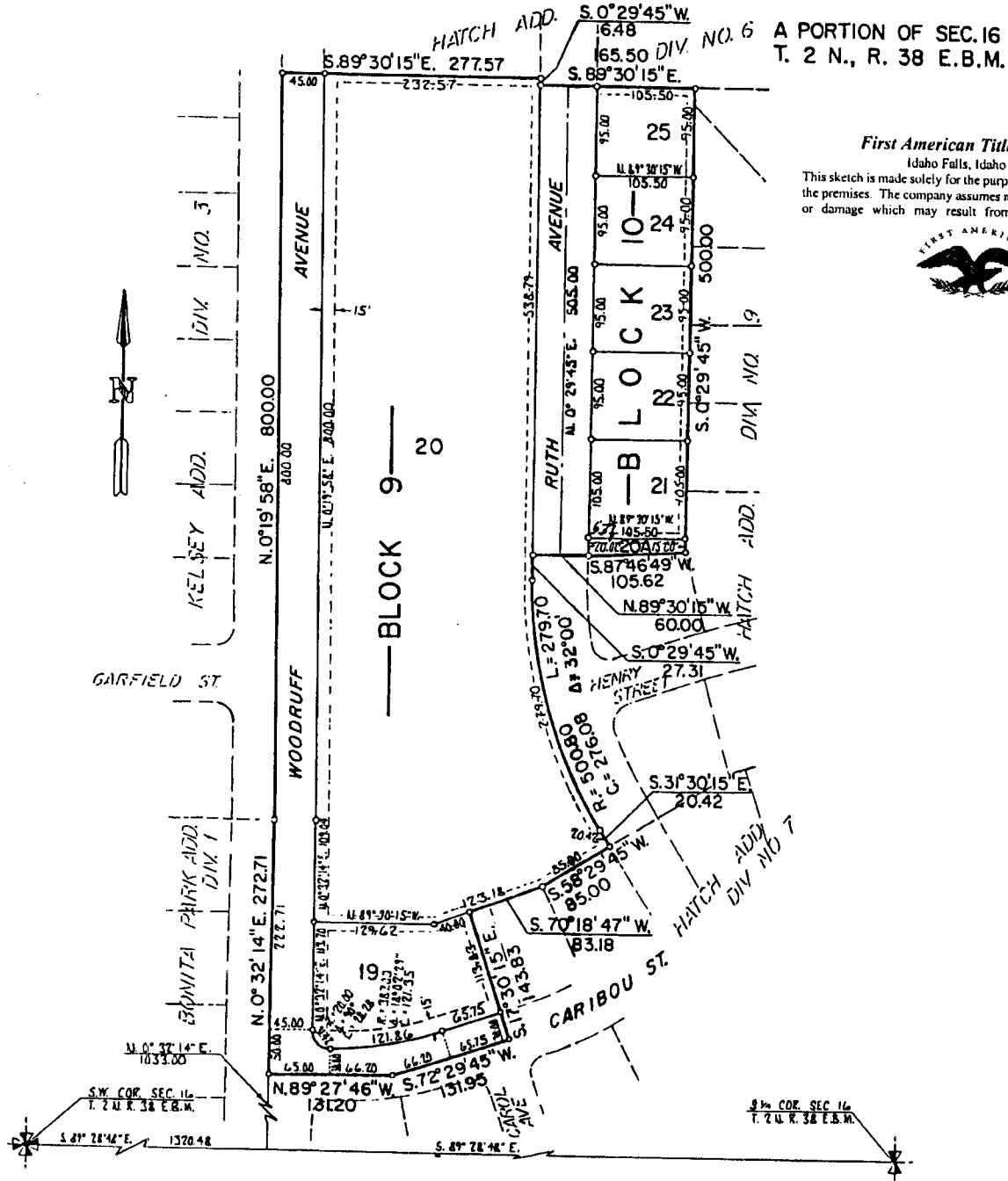


# HATCH ADDITION-DIVISION NO. 8 AND THE FIRST AMENDED PLAT OF LOT 19 AND A PORTION OF LOT 18 OF BLOCK 9 OF HATCH ADDITION-DIVISION NO. 7 TO THE CITY OF IDAHO FALLS, BONNEVILLE COUNTY, IDAHO



**First American Title Company**  
Idaho Falls, Idaho 83404  
This sketch is made solely for the purpose of assisting in locating the premises. The company assumes no liability for alleged loss or damage which may result from reliance on this map.

