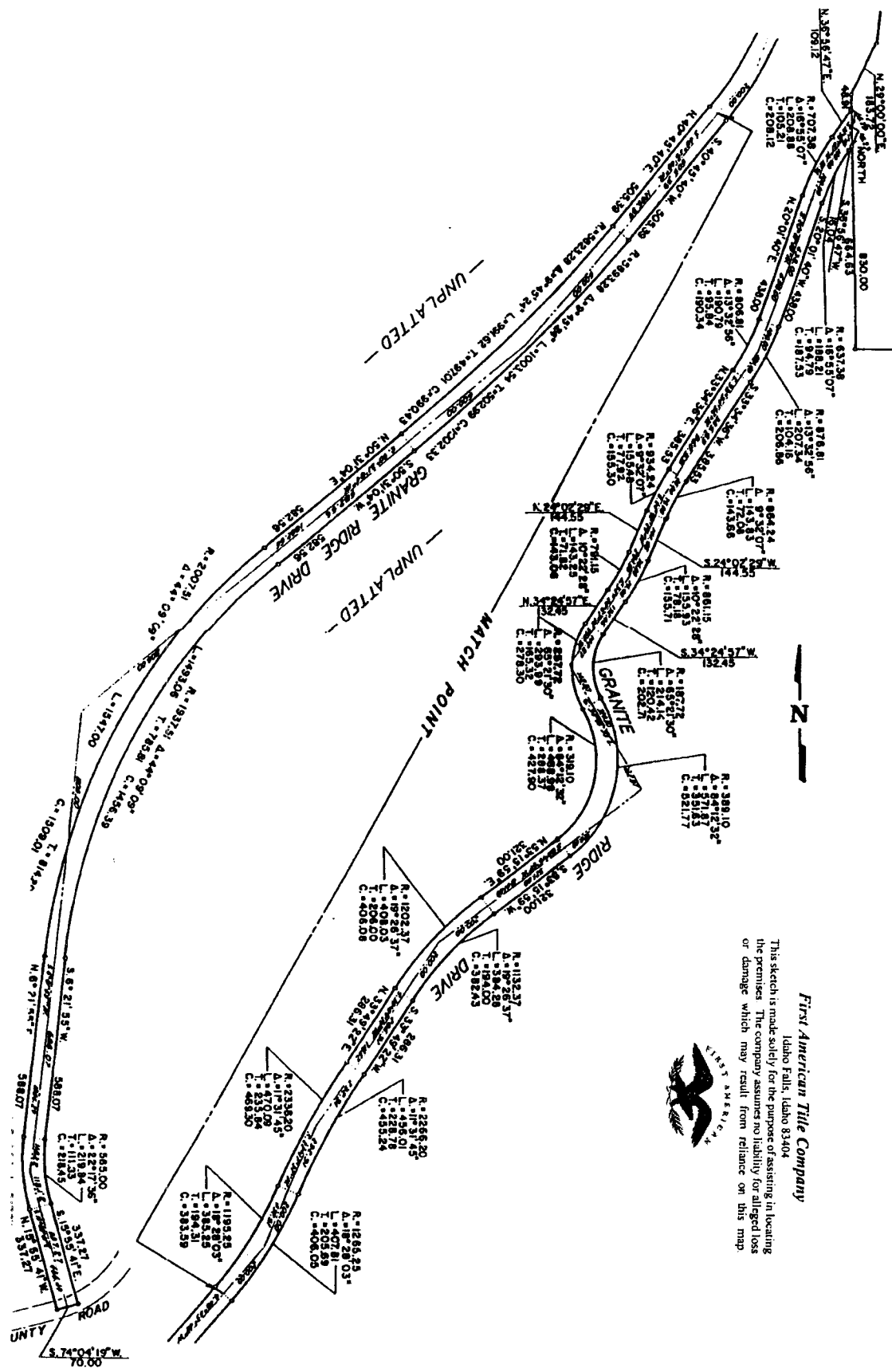


# "THE HAYS RANCH" A PLANNED UNIT DEVELOPMENT

BONNEVILLE COUNTY, IDAHO  
PORTION OF SECTIONS 24, 25, 25, 35 & 36 T. 3 N. R. 42 E. B. M.



This sketch is made solely for the purpose of assisting in locating the premises. The company assumes no liability for alleged loss or damage which may result from reliance on this map.



First American Title Company  
Idaho Falls, Idaho 83404

SEE SHEET 3