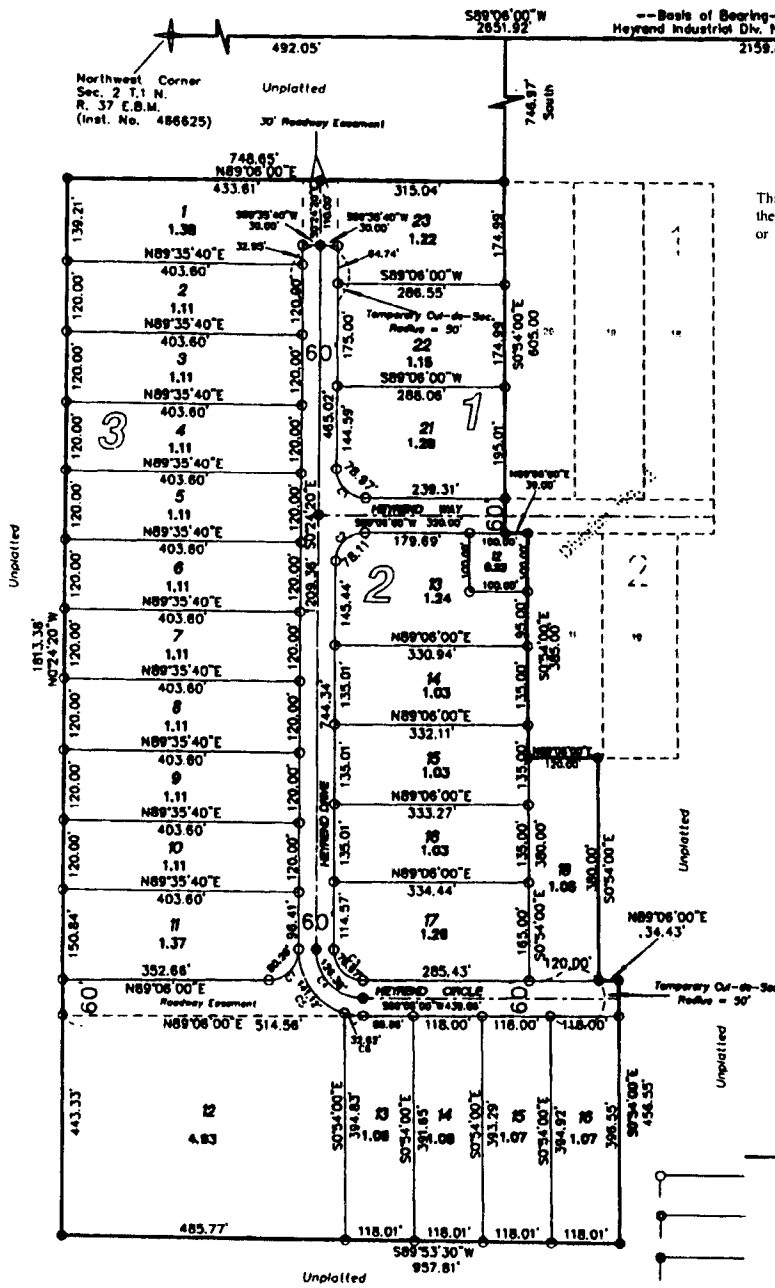


# HEYREND INDUSTRIAL PARK

## DIVISION NO. 3

### BONNEVILLE COUNTY, IDAHO

PART OF NORTHWEST 1/4, SECTION 2, T. 1 N., R. 37 E.B.M.  
AND NORTHEAST 1/4, SECTION 3, T. 1 N., R. 37 E.B.M.



**First American Title Company**  
Idaho Falls, Idaho 83404

This sketch is made solely for the purpose of assisting in locating the premises. The company assumes no liability for alleged loss or damage which may result from reliance on this map.



### NOTES

- indicates a 1/2" x 24" iron rod placed with a yellow plastic cap marked L.S. 722.
- indicates a 1/2" x 24" iron rod found
- indicates a 5/8" x 30" iron rod placed with a yellow plastic cap marked L.S. 722.
- indicates a 5/8" x 30" iron rod found
- utility and drainage easements are 8' thru each lot unless otherwise shown
- - - A 10' wide utility easement is reserved along the street side of all lots
- 1.08 indicates lot area in acres
- utility and drainage easements are 8' thru each lot unless otherwise shown
- The County will not maintain roads until constructed to County standards and officially accepted
- Private driveway approaches will be constructed and drainage swales maintained as shown on the approved improvement drawings on file in the office of the County Engineer.

NUM	DELTA	RADIUS	ARC	BEARING	CHORD
C1	90°29'40"	50.00'	78.97'	S45°39'10" E	71.02'
C2	89°30'20"	50.00'	78.11'	S44°20'50" W	70.40'
C3	90°29'40"	50.00'	78.97'	S45°39'10" E	71.02'
C4	90°29'40"	80.00'	126.35'	S45°39'10" E	113.62'
C5	73°30'13"	110.00'	141.12'	S37°08'26" E	131.64'
C6	16°59'27"	110.00'	32.62'	S82°24'16" E	32.30'
C7	89°30'20"	51.39'	60.28'	N44°20'50" E	72.37'