

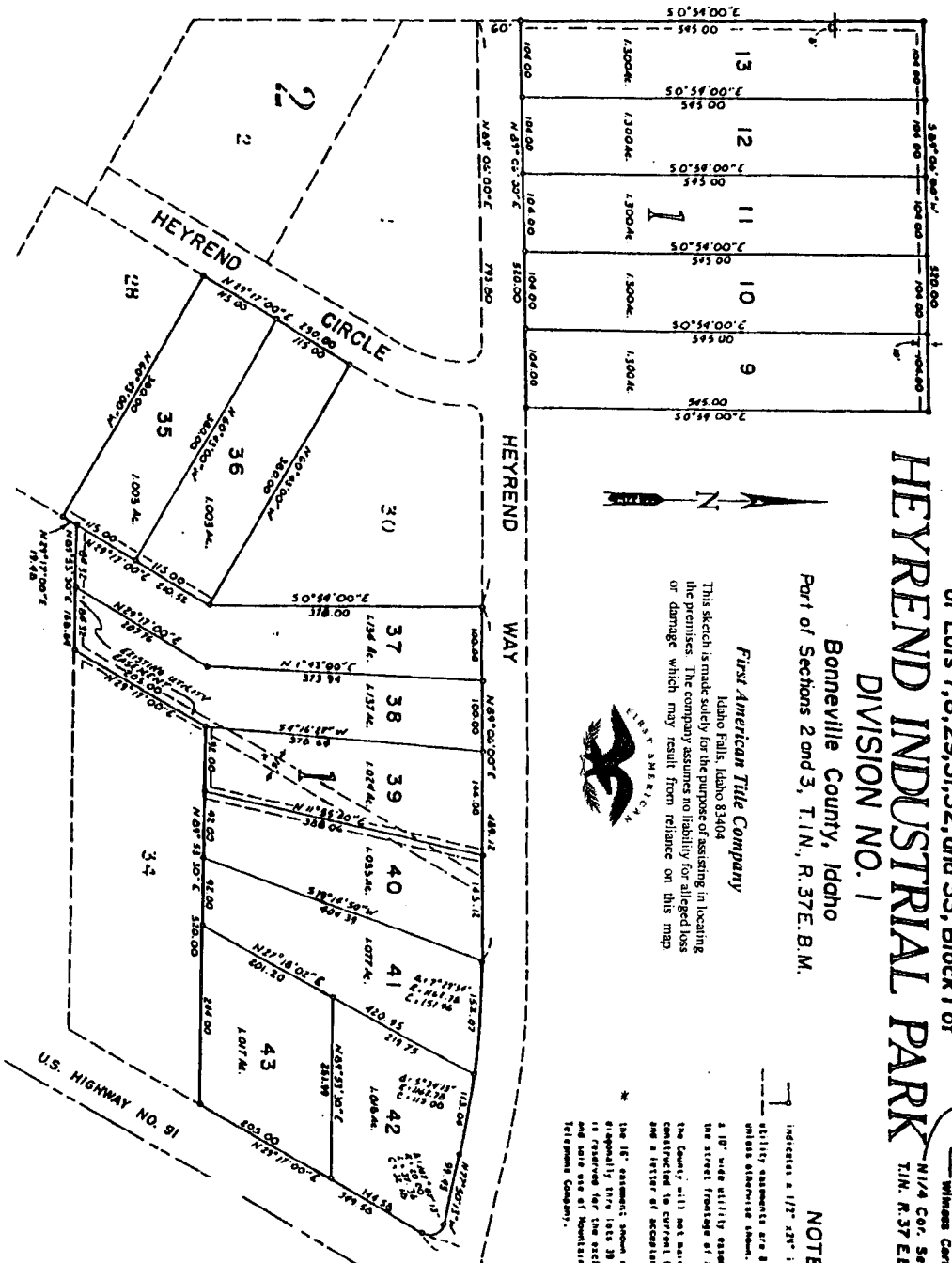
THE FIRST AMENDED PLAT

of Lots 7, 8, 29, 31, 32, and 33, Block 1 of
HEYREND INDUSTRIAL PARK
 DIVISION NO. 1

Bonneville County, Idaho
 Part of Sections 2 and 3, T.1N., R.37E.B.M.

First American Title Company
 Idaho Falls, Idaho 83404

This sketch is made solely for the purpose of assisting in locating the premises. The company assumes no liability for alleged loss or damage which may result from reliance on this map.



NOTES

- Indicates a 1/2" x 2" iron pin placed.
- Utility statements are 6' through each lot unless otherwise shown.
- 6' wide utility easement is reserved along the street frontage of all lots.
- The County will not maintain roads until constructed to current County standards and a letter of acceptance given.
- The 1/2" easement shown running diagonally thru lots 39 and 40 is reserved for the exclusive and sole use of Mountain Bell Telephone Company.

