

HEYREND INDUSTRIAL PARK

DIVISION NO. 4

BONNEVILLE COUNTY, IDAHO

PART OF THE NORTHWEST 1/4 SECTION 2, T. 1 N., R. 37 E.B.M.

CURVE TABLE

NAME	DELTA	ARC	RADIUS	BEARING	DISTANCE
C1	90°00'00"	380.00'	380.00'	N0°54'00"W	380.00'
C2	90°00'00"	380.00'	380.00'	S0°54'00"E	380.00'
C3	90°00'00"	380.00'	380.00'	N0°54'00"W	380.00'
C4	90°00'00"	380.00'	380.00'	S0°54'00"E	380.00'

First American Title Company
 Idaho Falls, Idaho 83404
 While this is a photoreproduced
 reproduction of the recorded
 plat, the Company assumes no
 liability for variations,
 if any, with a re-survey.

89°06'00"W
 2651.92'

---Basis of Bearing---

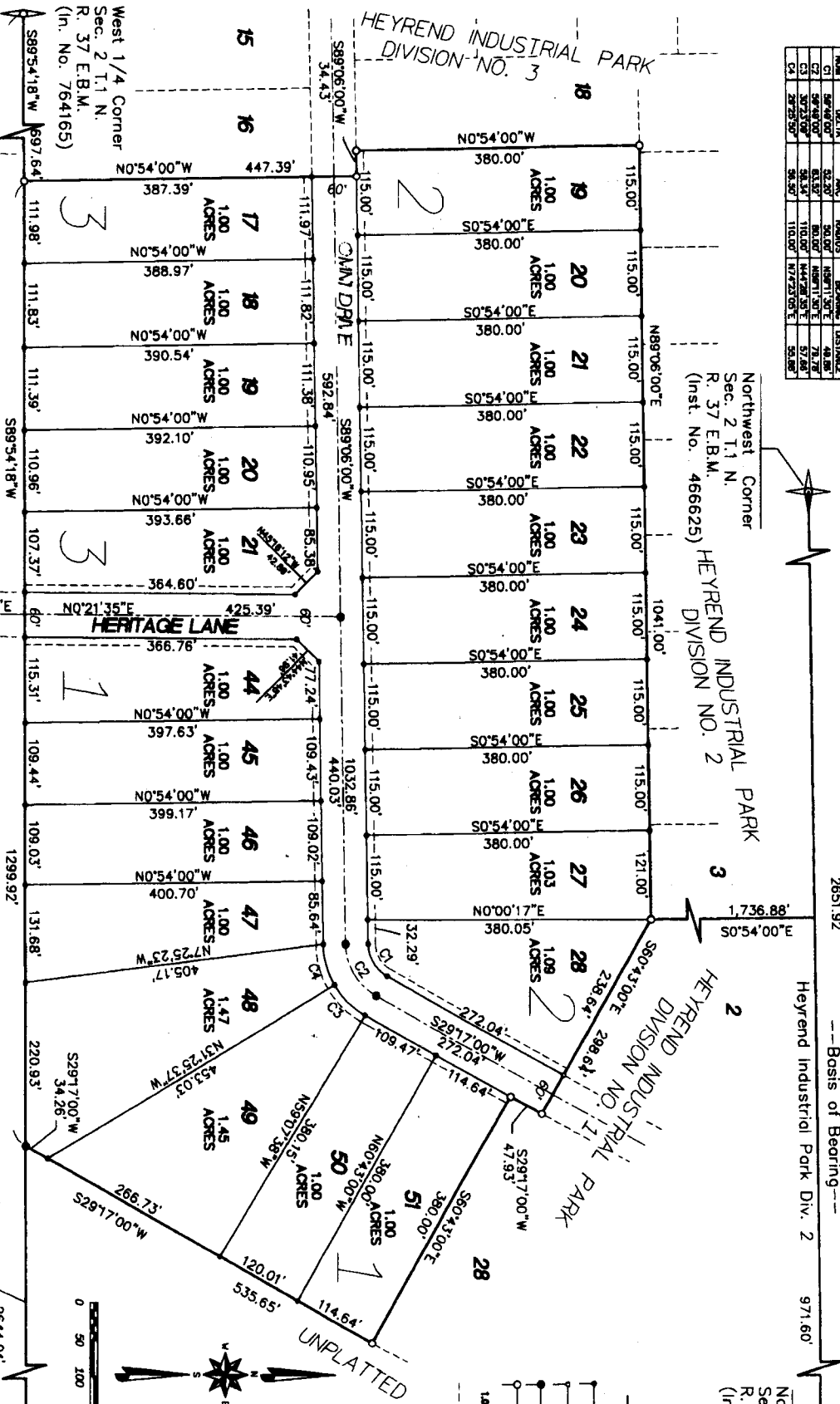
Heyrend Industrial Park Div. 2

North 1/4 Corner
 Sec. 2 T. 1 N.
 R. 37 E.B.M.
 (Inst. No. 809896)

NOTES

- 1. 1/4" = 100' horizontal scale
- 2. 1/4" = 100' vertical scale
- 3. 1/4" = 100' depth scale
- 4. 1/4" = 100' width scale
- 5. 1/4" = 100' area scale
- 6. 1/4" = 100' volume scale
- 7. 1/4" = 100' weight scale
- 8. 1/4" = 100' length scale
- 9. 1/4" = 100' height scale
- 10. 1/4" = 100' diameter scale
- 11. 1/4" = 100' radius scale
- 12. 1/4" = 100' circumference scale
- 13. 1/4" = 100' surface area scale
- 14. 1/4" = 100' volume scale
- 15. 1/4" = 100' weight scale
- 16. 1/4" = 100' length scale
- 17. 1/4" = 100' height scale
- 18. 1/4" = 100' diameter scale
- 19. 1/4" = 100' radius scale
- 20. 1/4" = 100' circumference scale
- 21. 1/4" = 100' surface area scale
- 22. 1/4" = 100' volume scale
- 23. 1/4" = 100' weight scale
- 24. 1/4" = 100' length scale
- 25. 1/4" = 100' height scale
- 26. 1/4" = 100' diameter scale
- 27. 1/4" = 100' radius scale
- 28. 1/4" = 100' circumference scale
- 29. 1/4" = 100' surface area scale
- 30. 1/4" = 100' volume scale
- 31. 1/4" = 100' weight scale
- 32. 1/4" = 100' length scale
- 33. 1/4" = 100' height scale
- 34. 1/4" = 100' diameter scale
- 35. 1/4" = 100' radius scale
- 36. 1/4" = 100' circumference scale
- 37. 1/4" = 100' surface area scale
- 38. 1/4" = 100' volume scale
- 39. 1/4" = 100' weight scale
- 40. 1/4" = 100' length scale
- 41. 1/4" = 100' height scale
- 42. 1/4" = 100' diameter scale
- 43. 1/4" = 100' radius scale
- 44. 1/4" = 100' circumference scale
- 45. 1/4" = 100' surface area scale
- 46. 1/4" = 100' volume scale
- 47. 1/4" = 100' weight scale
- 48. 1/4" = 100' length scale
- 49. 1/4" = 100' height scale
- 50. 1/4" = 100' diameter scale
- 51. 1/4" = 100' radius scale
- 52. 1/4" = 100' circumference scale
- 53. 1/4" = 100' surface area scale
- 54. 1/4" = 100' volume scale
- 55. 1/4" = 100' weight scale
- 56. 1/4" = 100' length scale
- 57. 1/4" = 100' height scale
- 58. 1/4" = 100' diameter scale
- 59. 1/4" = 100' radius scale
- 60. 1/4" = 100' circumference scale
- 61. 1/4" = 100' surface area scale
- 62. 1/4" = 100' volume scale
- 63. 1/4" = 100' weight scale
- 64. 1/4" = 100' length scale
- 65. 1/4" = 100' height scale
- 66. 1/4" = 100' diameter scale
- 67. 1/4" = 100' radius scale
- 68. 1/4" = 100' circumference scale
- 69. 1/4" = 100' surface area scale
- 70. 1/4" = 100' volume scale
- 71. 1/4" = 100' weight scale
- 72. 1/4" = 100' length scale
- 73. 1/4" = 100' height scale
- 74. 1/4" = 100' diameter scale
- 75. 1/4" = 100' radius scale
- 76. 1/4" = 100' circumference scale
- 77. 1/4" = 100' surface area scale
- 78. 1/4" = 100' volume scale
- 79. 1/4" = 100' weight scale
- 80. 1/4" = 100' length scale
- 81. 1/4" = 100' height scale
- 82. 1/4" = 100' diameter scale
- 83. 1/4" = 100' radius scale
- 84. 1/4" = 100' circumference scale
- 85. 1/4" = 100' surface area scale
- 86. 1/4" = 100' volume scale
- 87. 1/4" = 100' weight scale
- 88. 1/4" = 100' length scale
- 89. 1/4" = 100' height scale
- 90. 1/4" = 100' diameter scale
- 91. 1/4" = 100' radius scale
- 92. 1/4" = 100' circumference scale
- 93. 1/4" = 100' surface area scale
- 94. 1/4" = 100' volume scale
- 95. 1/4" = 100' weight scale
- 96. 1/4" = 100' length scale
- 97. 1/4" = 100' height scale
- 98. 1/4" = 100' diameter scale
- 99. 1/4" = 100' radius scale
- 100. 1/4" = 100' circumference scale

The County will not be responsible for any
 errors or omissions in this plat, and
 specifically disclaims any liability
 for the same.



Center 1/4 Corner
 Sec. 2 T. 1 N.
 R. 37 E.B.M.
 (In. No. 1092735)

TETON INDUSTRIAL PARK
 DIVISION NO. 1

UNPLATTED
 INDUSTRIAL PARK BASIS

EAST WEST CENTER LINE
 BEARING N89°54'18"E

UNPLATTED