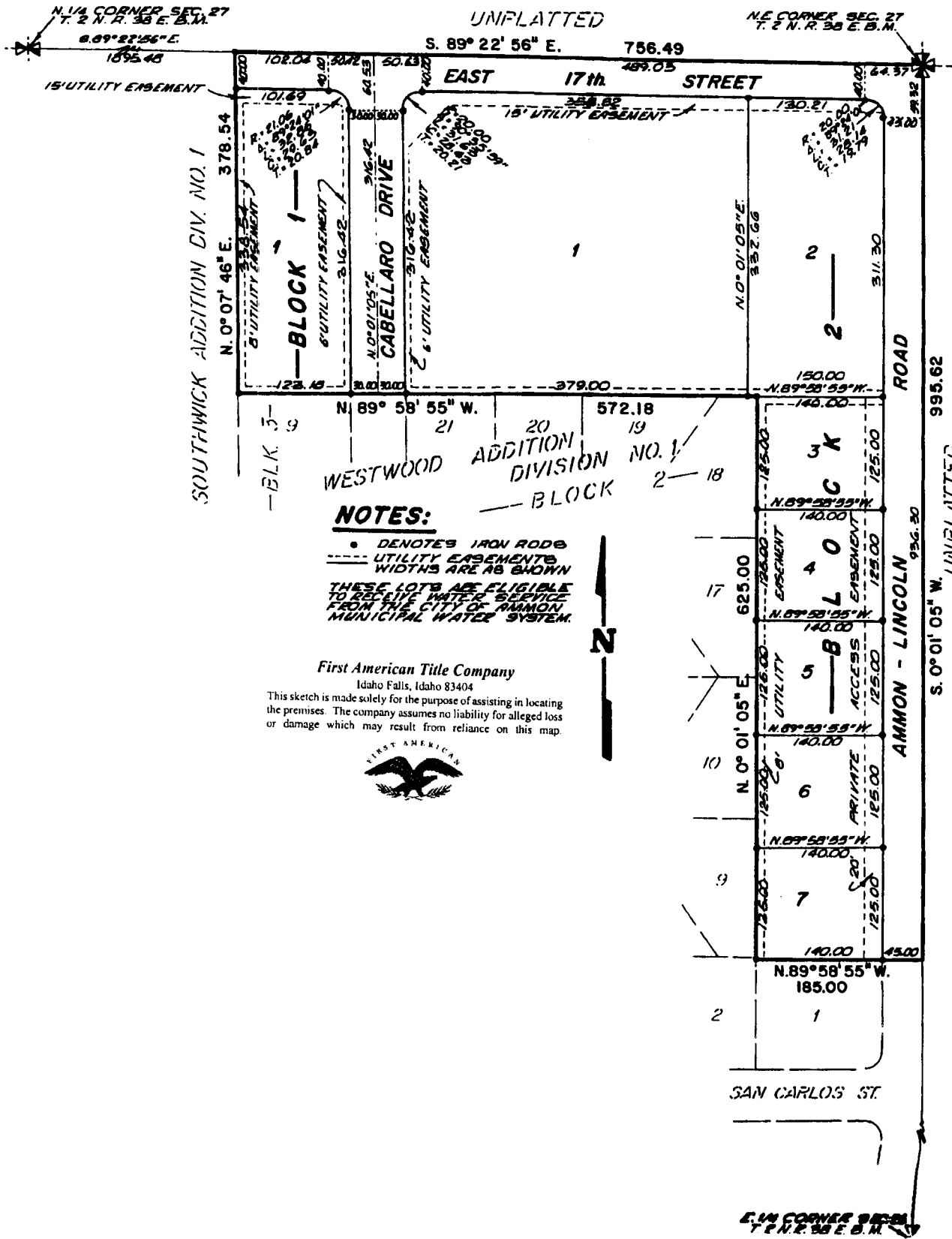


# HILLER ADDITION DIVISION NO. 1

BEING A RE-PLAT OF LT. 10 BLK. 1 & LTS 22-27 BLK 2 WESTWOOD ADDITION DIVISION NO. 1  
TO THE CITY OF AMMON, BONNEVILLE COUNTY, IDAHO



**NOTES:**  
 • DENOTES IRON RODS  
 --- UTILITY EASEMENTS  
 WIDTHS ARE AS SHOWN  
 THESE LOTS ARE ELIGIBLE  
 TO RECEIVE WATER SERVICE  
 FROM THE CITY OF AMMON  
 MUNICIPAL WATER SYSTEM.

First American Title Company  
 Idaho Falls, Idaho 83404  
 This sketch is made solely for the purpose of assisting in locating  
 the premises. The company assumes no liability for alleged loss  
 or damage which may result from reliance on this map.



UNPLATTED  
 AMMON LINCOLN ROAD LIMITED TO 5 CURB CUTS  
 TO PROVIDE ACCESS TO LOTS 2 THRU 7 BLOCK 2.