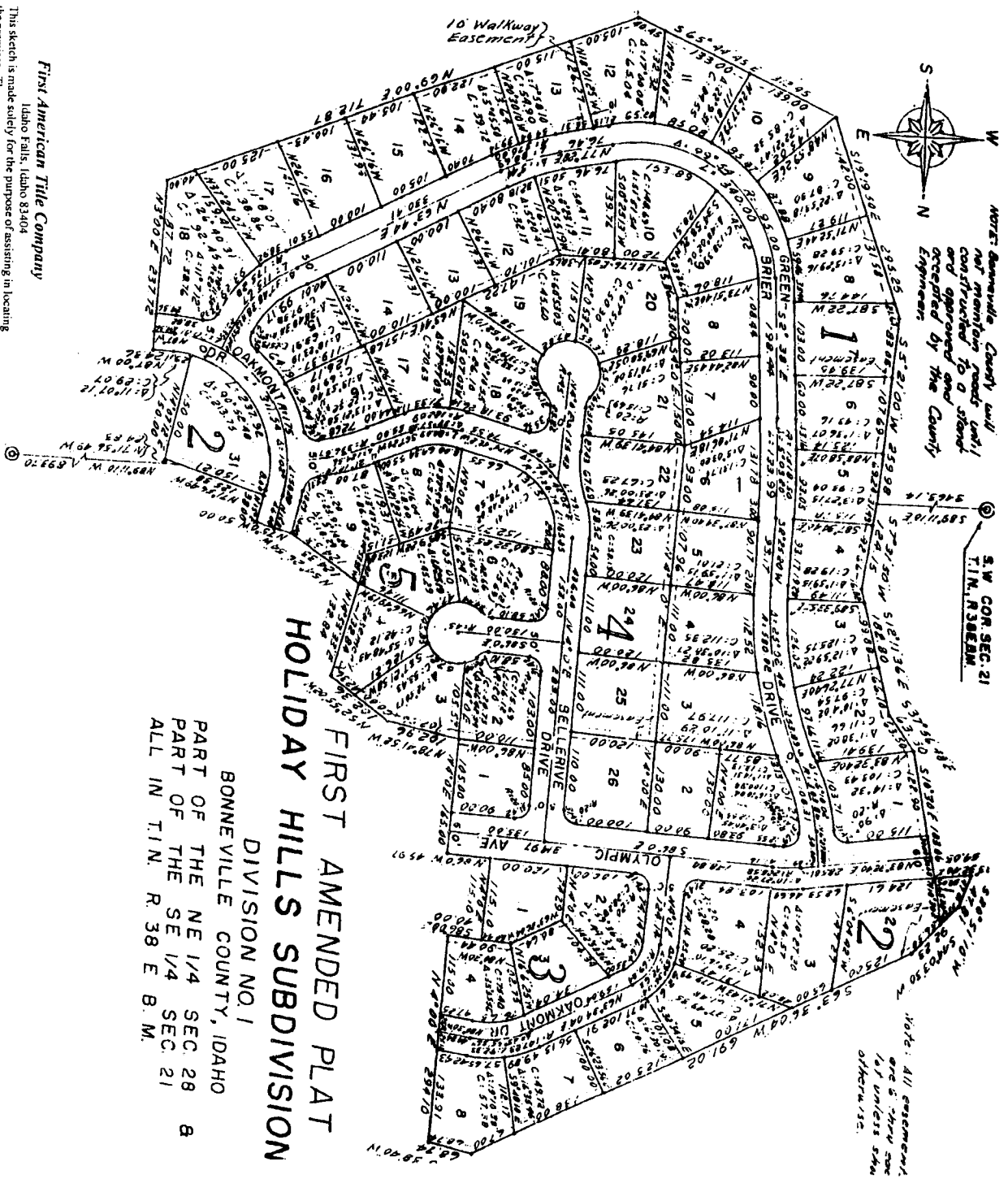


NOTE: Bonneville County will not maintain roads until constructed to a standard approved by the County Engineer.

S.W. COR. SEC. 21
T.1N. R.38E.M.

Note: All easements are 5' thru 20' in width unless otherwise specified.



**FIRST AMENDED PLAT
HOLIDAY HILLS SUBDIVISION
DIVISION NO. 1
BONNEVILLE COUNTY, IDAHO
PART OF THE NE 1/4 SEC. 28 &
PART OF THE SE 1/4 SEC. 21
ALL IN T.1N. R.38 E. B. M.**

First American Title Company

Idaho Falls, Idaho 83404
This sketch is made solely for the purpose of assisting in locating the premises. The company assumes no liability for alleged loss or damage which may result from reliance on this map.

