

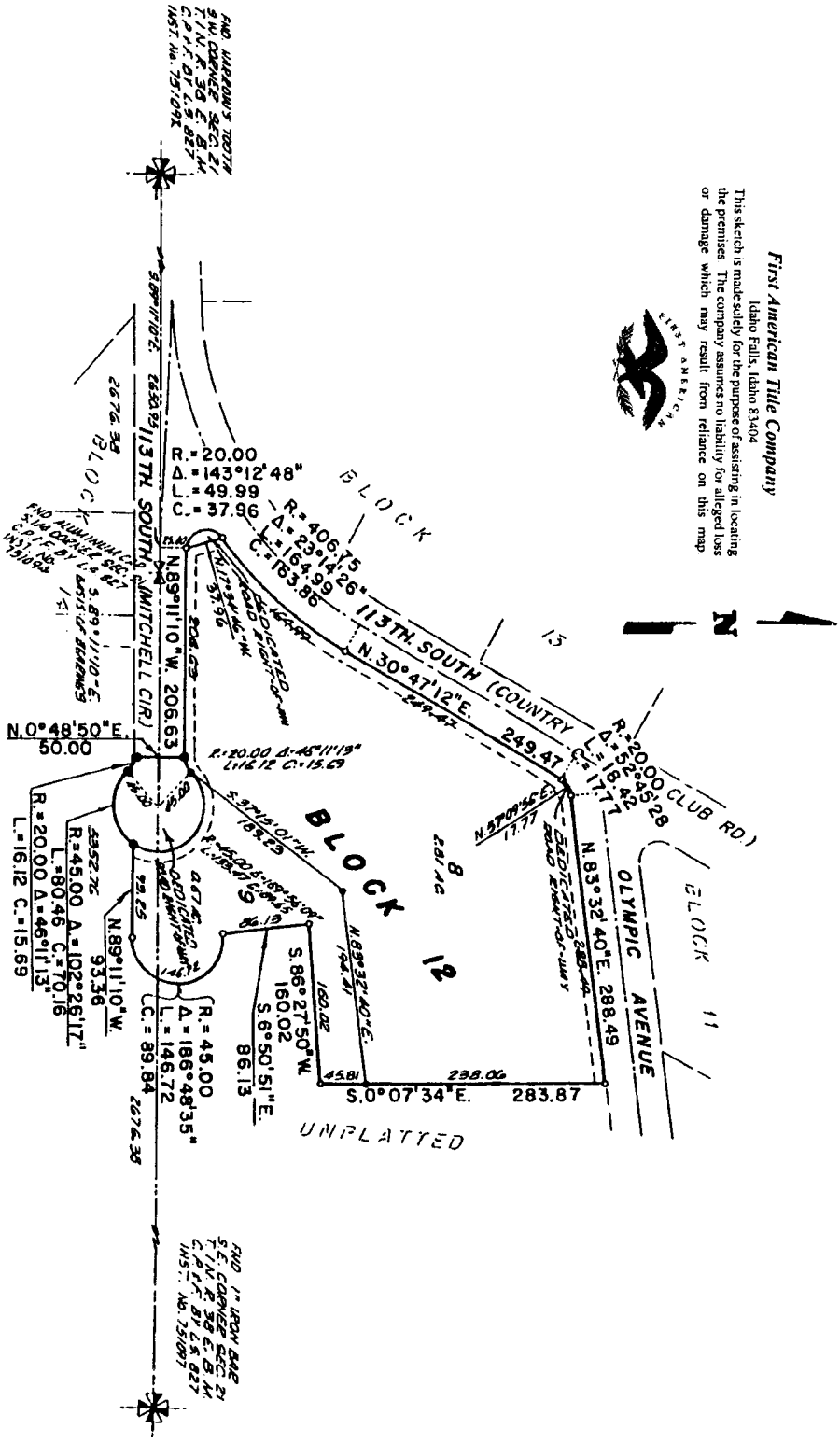
FIRST AMENDED PLAT OF HOLIDAY HILLS SUBDIVISION DIVISION NO. 2

BONNEVILLE COUNTY, IDAHO

BEING A REPLAT OF BLOCK 12, AND PART OF MITCHELL CIRCLE,
OF HOLIDAY HILLS SUBDIVISION, DIVISION NO. 2, LYING IN
THE S. 1/2 SECTION 21 & NE 1/4 SECTION 28, T.1N., R. 38 E., B. M.

First American Title Company
Idaho Falls, Idaho 83404

This sketch is made solely for the purpose of assisting in locating the premises. The company assumes no liability for alleged loss or damage which may result from reliance on this map.



LEGEND & NOTES

- 5/8" x 3/8" Steel Rebar set with plastic cap stamped L.S.227
- 1/2" x 2 1/2" Steel Rebar set with plastic cap stamped L.S.227
- Steel Rebar found 1/2" DIA - AD QAD
- 1/2" Iron pipe utility easement as shown by survey of road frontages within each block