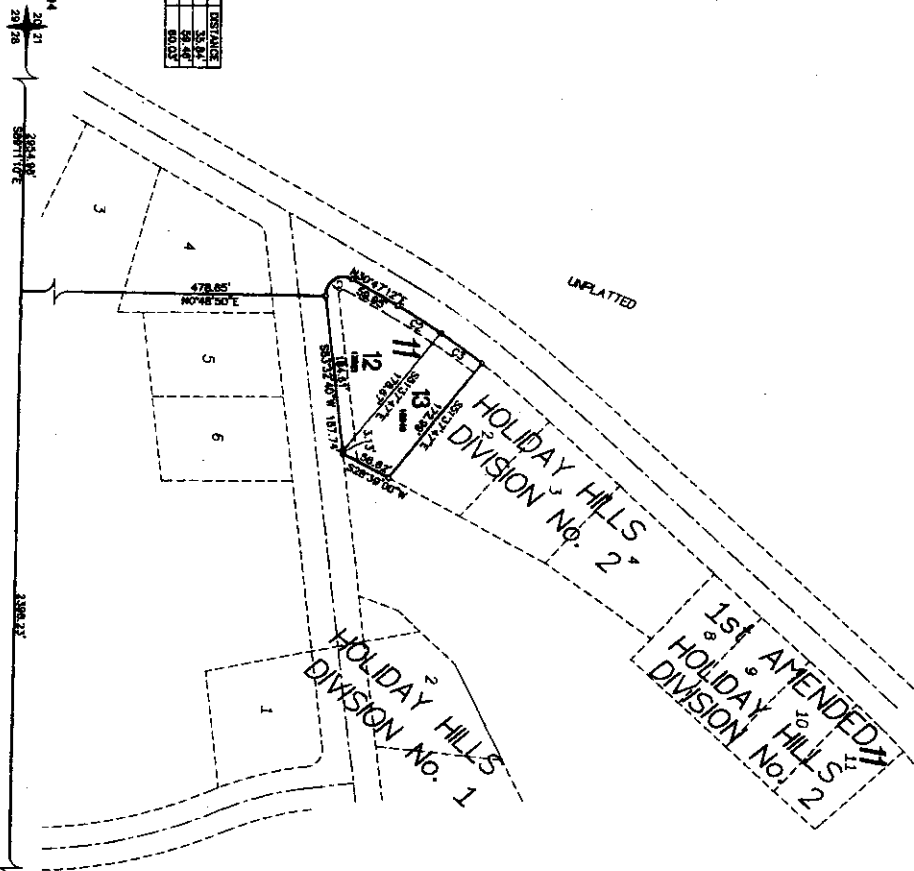


SECOND AMENDED PLAT HOLIDAY HILLS SUBDIVISION DIVISION NO. 2

BONNEVILLE COUNTY, IDAHO
BEING A REPLAT of LOT 1, BLOCK 11 OF
HOLIDAY HILLS SUBDIVISION, DIVISION NO. 2
PART OF THE S 1/2 OF SECTION 21, T. 1 N., R. 38 E. 81M.



CURVE TABLE

NO.	CHANGING	ANG.	BEARING	STARTING DISTANCE	END DISTANCE
1	174.12	44.4°	N 44.4° E	0.00	174.12
2	174.12	44.4°	N 44.4° E	174.12	348.24
3	174.12	44.4°	N 44.4° E	348.24	522.36
4	174.12	44.4°	N 44.4° E	522.36	696.48
5	174.12	44.4°	N 44.4° E	696.48	870.60
6	174.12	44.4°	N 44.4° E	870.60	1044.72
7	174.12	44.4°	N 44.4° E	1044.72	1218.84
8	174.12	44.4°	N 44.4° E	1218.84	1392.96
9	174.12	44.4°	N 44.4° E	1392.96	1567.08
10	174.12	44.4°	N 44.4° E	1567.08	1741.20
11	174.12	44.4°	N 44.4° E	1741.20	1915.32
12	174.12	44.4°	N 44.4° E	1915.32	2089.44

SW COR. SEC. 21,
T. 1 N., R. 38 E. 81M.
CP&F INST. # 500784

SE COR. SEC. 21,
T. 1 N., R. 38 E. 81M.
CP&F INST. # 500786

(---Basis of Bearing---)

- Indicates section corner as described
- Indicates 1/4 corner as described
- Indicates a 1/2" x 3/4" iron rod found with a yellow plastic cap marked L.S. 722
- Indicates a 1/2" x 3/4" iron rod found with a yellow plastic cap marked L.S. 723
- Indicates a 1/2" x 3/4" iron rod found with a yellow plastic cap marked L.S. 724
- Indicates a 1/2" x 3/4" iron rod found with a yellow plastic cap marked L.S. 725
- Indicates a 1/2" x 3/4" iron rod found with a yellow plastic cap marked L.S. 726
- Indicates a 1/2" x 3/4" iron rod found with a yellow plastic cap marked L.S. 727
- Indicates a 1/2" x 3/4" iron rod found with a yellow plastic cap marked L.S. 728
- Indicates a 1/2" x 3/4" iron rod found with a yellow plastic cap marked L.S. 729
- Indicates a 1/2" x 3/4" iron rod found with a yellow plastic cap marked L.S. 730
- Indicates a 1/2" x 3/4" iron rod found with a yellow plastic cap marked L.S. 731
- Indicates a 1/2" x 3/4" iron rod found with a yellow plastic cap marked L.S. 732
- Indicates a 1/2" x 3/4" iron rod found with a yellow plastic cap marked L.S. 733
- Indicates a 1/2" x 3/4" iron rod found with a yellow plastic cap marked L.S. 734
- Indicates a 1/2" x 3/4" iron rod found with a yellow plastic cap marked L.S. 735
- Indicates a 1/2" x 3/4" iron rod found with a yellow plastic cap marked L.S. 736
- Indicates a 1/2" x 3/4" iron rod found with a yellow plastic cap marked L.S. 737
- Indicates a 1/2" x 3/4" iron rod found with a yellow plastic cap marked L.S. 738
- Indicates a 1/2" x 3/4" iron rod found with a yellow plastic cap marked L.S. 739
- Indicates a 1/2" x 3/4" iron rod found with a yellow plastic cap marked L.S. 740

First American Title Company
Idaho Falls, ID 83404
While this is a photographic
reproduction of the recorded
plat, the company assumes
no liability for variations,
if any, with a re-survey.

11250