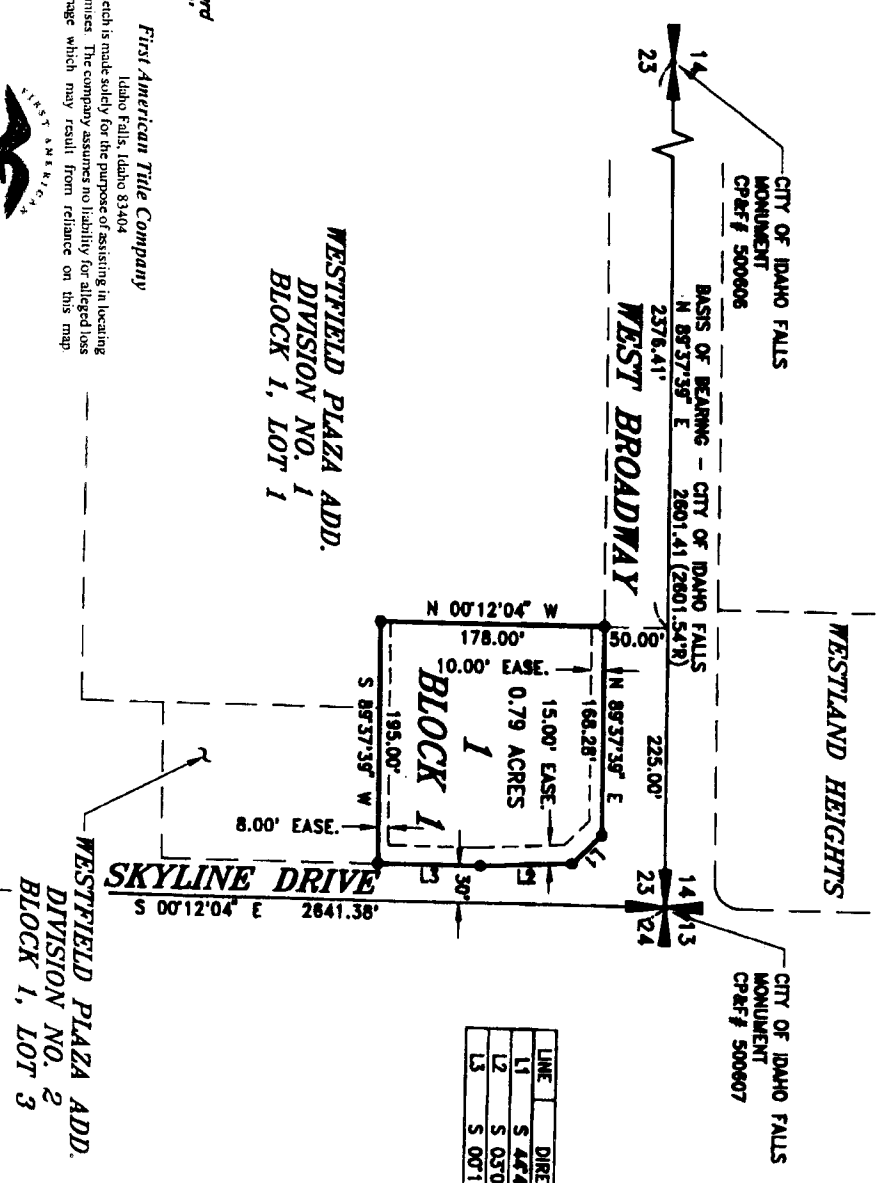






HOLIDAY OIL ADDITION

AN ADDITION TO THE CITY OF IDAHO FALLS, BONNEVILLE COUNTY, IDAHO
PART OF THE NE 1/4 SECTION 23, T. 2 N., R. 37 E., B.M.



LINE	DIRECTION	DISTANCE
L1	S 44°49'24" E	32.81'
L2	S 03°04'21" E	73.33'
L3	S 00°12'04" E	81.33'

LEGEND

-  Section control corners
-  Placed 5/8"x30" iron rod with cap marked P.L.S. 4563
-  Utility easements are 10' wide along the frontage of all lots unless otherwise shown. Side yard and rear yard easements are 8' unless otherwise shown.
-  (2601.54' R) Distance of record

This sketch is made solely for the purpose of assisting in locating the premises. The company assumes no liability for alleged loss or damage which may result from reliance on this map.



First American Title Company

Idaho Falls, Idaho 83404

CITY OF IDAHO FALLS MONUMENT
CPR# 500493

