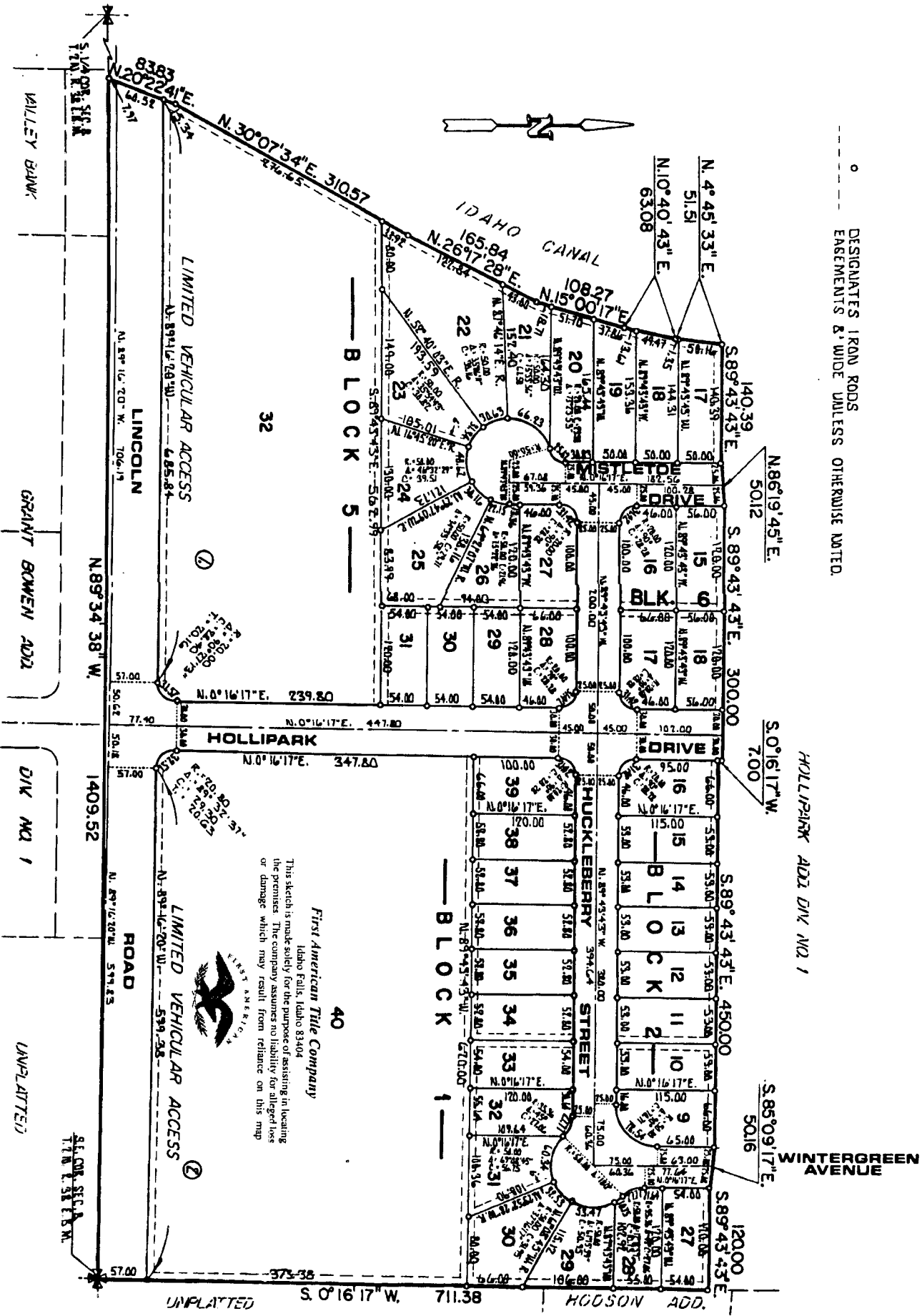


# FIRST AMERICAN PLAT OF HOLLIPARK DIVISION NO. 2

TO THE CITY OF IDAHO FALLS, BONNEVILLE COUNTY, IDAHO  
A PORTION OF SEC. 8 T. 2 N.R. 38 E. B.M.

DESIGNATES IRON RODS  
ENGAGEMENTS & WIDE UNLESS OTHERWISE NOTED.



**First American Title Company**  
 Idaho Falls, Idaho 83404  
 This sketch is made solely for the purpose of assisting in locating the premises. The company assumes no liability for alleged loss or damage which may result from reliance on this map.



**LIMITED VEHICULAR ACCESS**  
 ②

**ROAD**

**HOLLIPARK DRIVE**

**SHUCKLEBERRY STREET**

**WINTERGREEN AVENUE**

**LINCOLN**

**GRANT BOWEN ADD.**

**LIMITED VEHICULAR ACCESS**  
 ①

**VALLEY BANK**

**IDAHO CANAL**

**UNPLATTED**

**UNPLATTED**

**UNPLATTED**

**UNPLATTED**

**UNPLATTED**

**UNPLATTED**

**UNPLATTED**

**UNPLATTED**

**UNPLATTED**