

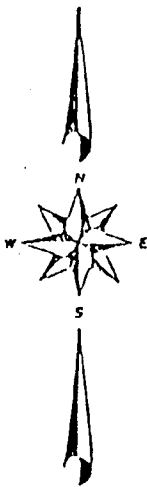
HOME RANCH ADDITION

DIVISION NO. 13

TO THE CITY OF IDAHO FALLS, IDAHO
PART OF THE S.E. 1/4 SEC. 30 T.2N., R.38 E.B.M.

CENTER OF SEC. 30
T. 2 N., R. 38 E.B.M.
(1/2" IRON ROD)

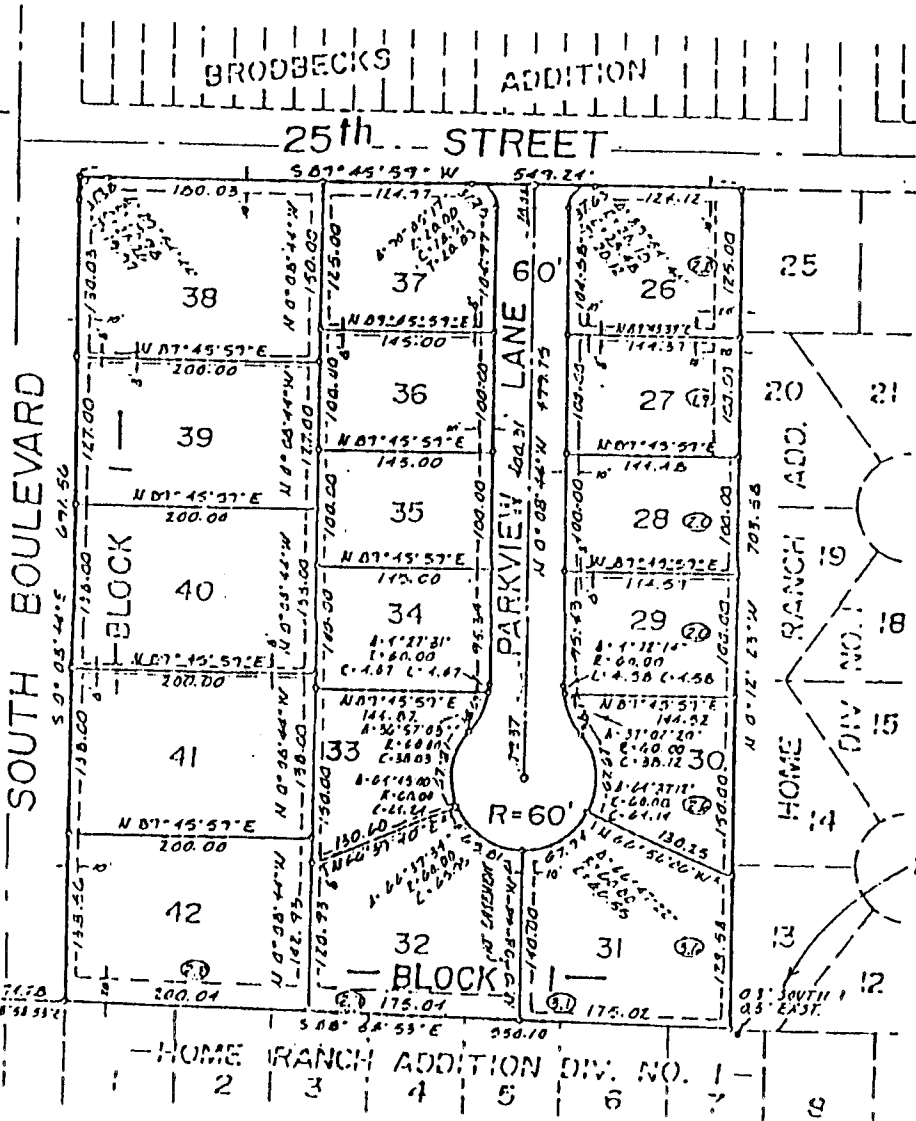
Tauphous Park



Unplatted

(ANGLE POINT)

S. 1/4 COR. SEC. 30
T. 2 N., R. 38 E.B.M.
(City Monument)



First American Title Company

Idaho Falls, Idaho 83404

This sketch is made solely for the purpose of assisting in locating the premises. The company assumes no liability for alleged loss or damage which may result from reliance on this map.

