

# HOMER ESTATES DIVISION NO. 1

AN ADDITION TO THE CITY OF IONA,  
BONNEVILLE COUNTY, IDAHO

IN THE E. 1/2 N.E. 1/4 S.W. 1/4 SECTION 1, T. 2 N. R. 38 E., E.M.

### LEGEND & NOTES

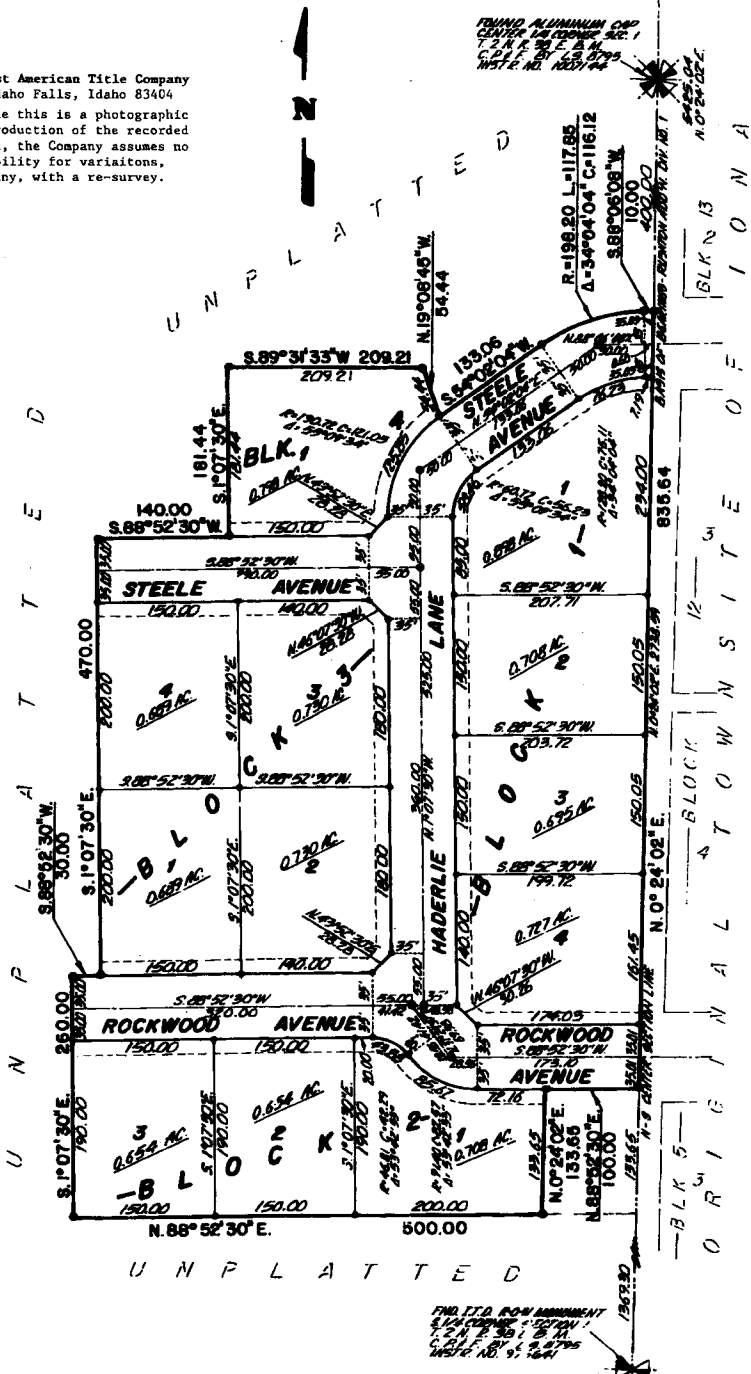
- 5/8" x 3/4" Steel rebar set with plastic cap stamped L.S. 8795
- 1/2" x 24" Steel rebar set with plastic cap stamped L.S. 8795
- Steel survey nail set with washer stamped L.S. 8795
- 1/2" Steel rebar found with caps stamped L.S.

A fifteen foot wide Utility Easement is hereby reserved along all road frontages within each lot. All other utility easements are ten feet wide unless noted otherwise.

This division contains 12 lots. (0.72 acre average lot size.)

First American Title Company  
Idaho Falls, Idaho 83404

While this is a photographic reproduction of the recorded plat, the Company assumes no liability for variations, if any, with a re-survey.



FOUND ALUMINUM CAP  
N. 1/4 CORNER SEC. 1  
T. 2 N. R. 38 E. E.M.  
C. 1/4 E. BY S. 8795  
NOTE NO. 1251580

FOUND ALUMINUM CAP  
CENTER 1/4 CORNER SEC. 1  
T. 2 N. R. 38 E. E.M.  
C. 1/4 E. BY S. 8795  
NOTE NO. 1251580

FOUND ALUMINUM CAP  
1/4 CORNER SEC. 1  
T. 2 N. R. 38 E. E.M.  
C. 1/4 E. BY S. 8795  
NOTE NO. 971641