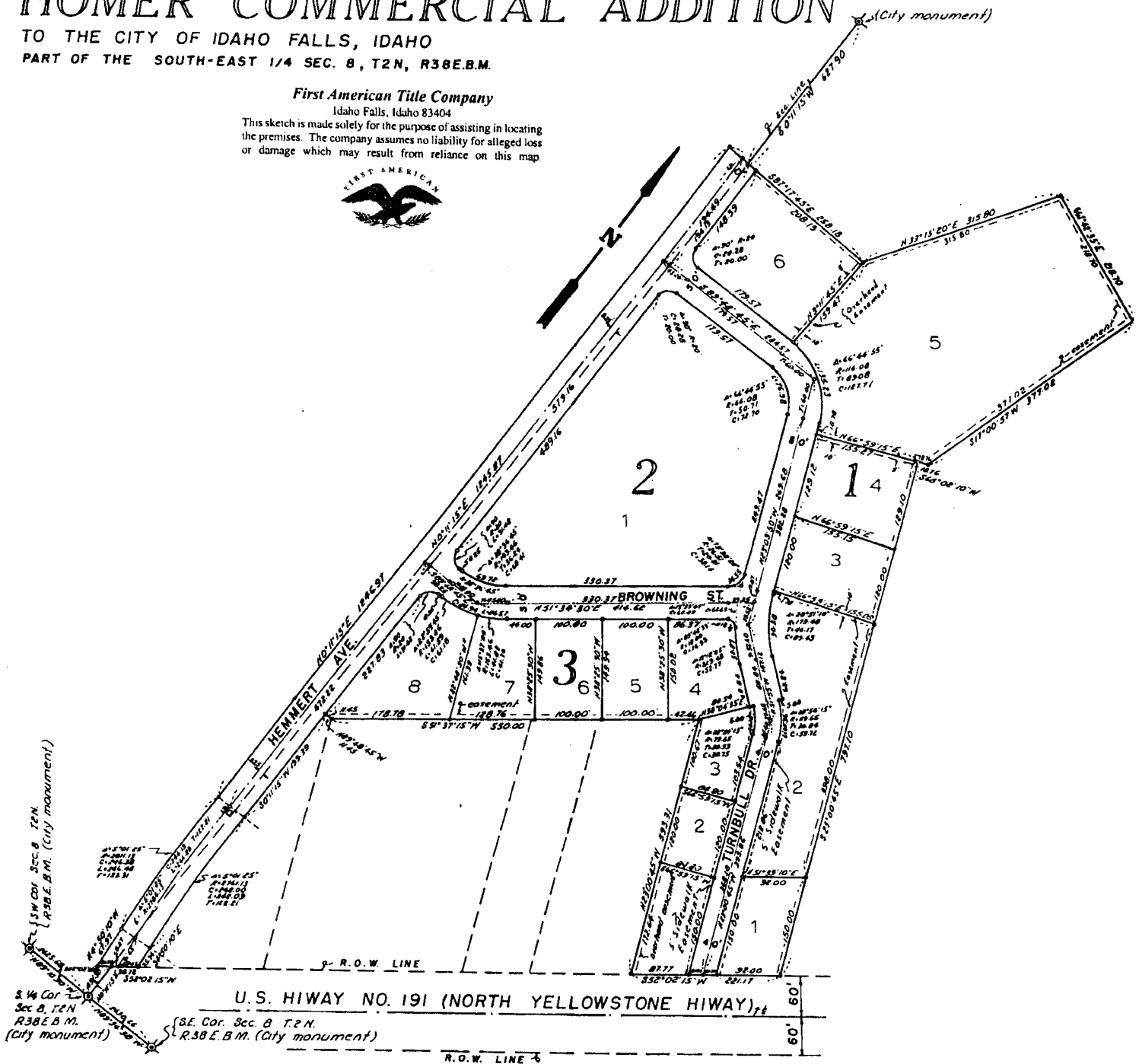


HOMER COMMERCIAL ADDITION

TO THE CITY OF IDAHO FALLS, IDAHO
PART OF THE SOUTH-EAST 1/4 SEC. 8, T2N, R38E.B.M.

First American Title Company
Idaho Falls, Idaho 83404

This sketch is made solely for the purpose of assisting in locating the premises. The company assumes no liability for alleged loss or damage which may result from reliance on this map.



SW Cor. Sec. 8, T2N, R38E.B.M. (City monument)

SE Cor. Sec. 8, T2N, R38E.B.M. (City monument)

R.O.W. LINE

60'