

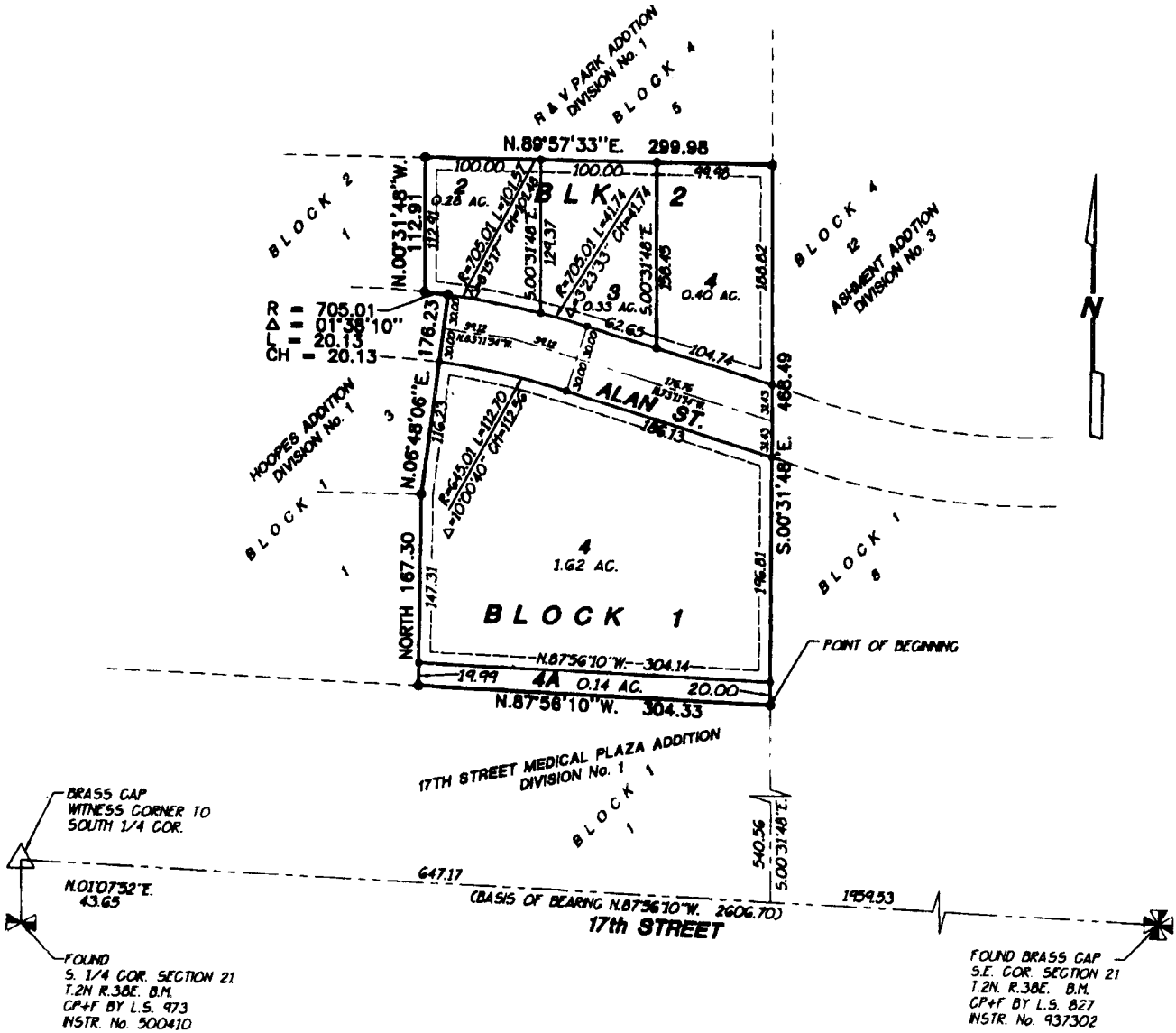
HOOPES ADDITION DIVISION NO. 2

AN ADDITION TO THE CITY OF IDAHO FALLS,
BONNEVILLE COUNTY, IDAHO
BEING PART OF THE S.W. 1/4 OF THE S.E. 1/4 SECTION 21 T.2N. R.38E. B.M.

First American Title Company

Idaho Falls, Idaho 83404

This sketch is made solely for the purpose of assisting in locating the premises. The company assumes no liability for alleged loss or damage which may result from reliance on this map.



LEGEND & NOTES

- 5/8" x 30" Steel Re-bar set with plastic cap stamped L.S.8795
- 1/2" x 24" Steel Re-bar set with plastic cap stamped L.S.8795
- Steel Re-bar found with caps stamped as shown

----- A fifteen foot wide Utility Easement is hereby granted along all road frontages within each lot.
All other easements are ten feet wide unless otherwise noted.