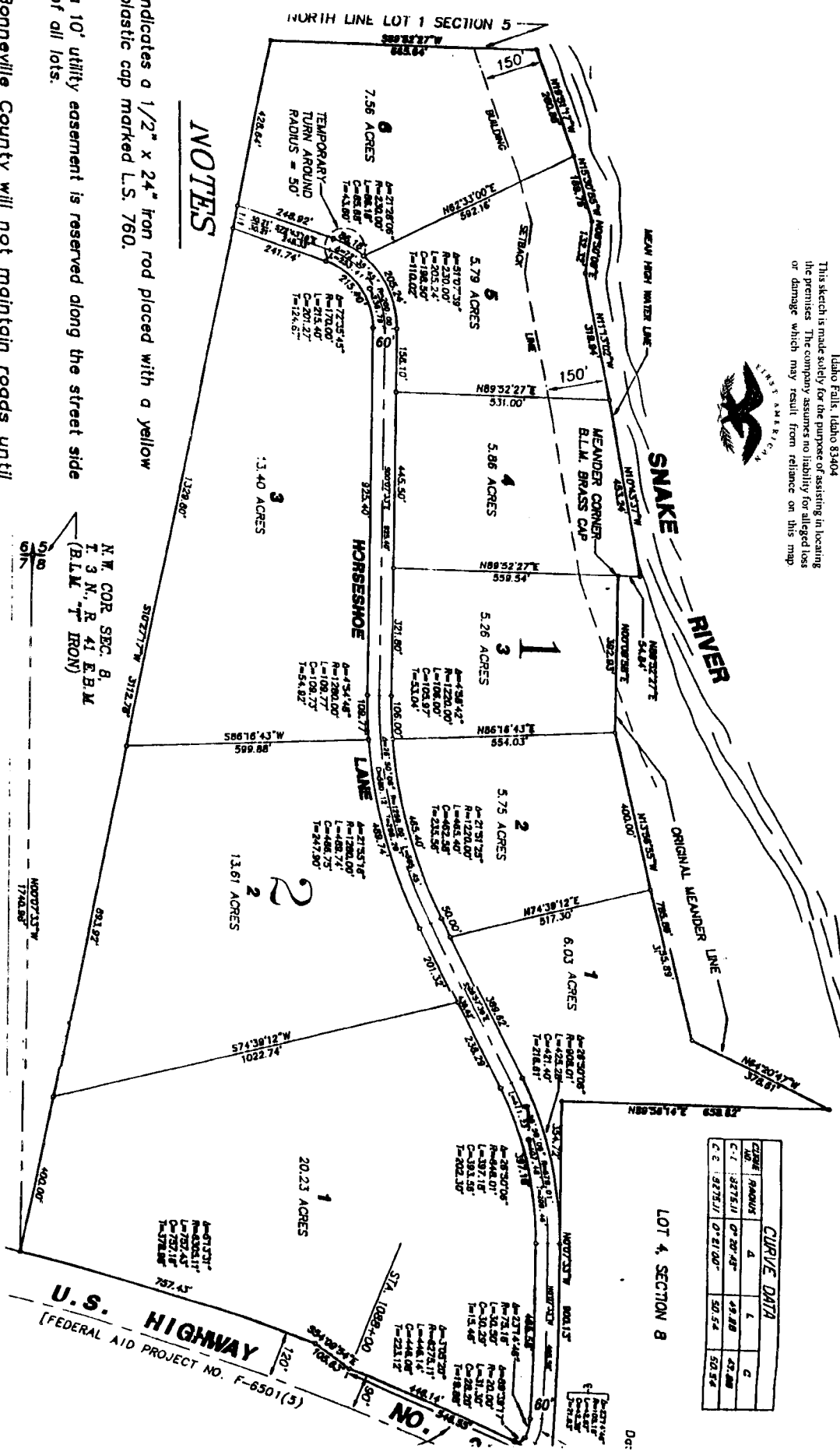


HORSESHOE BEND SUBDIVISION

DIVISION NO. 1
BONNEVILLE COUNTY, IDAHO
PART OF LOT 1, SEC. 6 AND PART OF
THE N.W. 1/4 OF SEC. 8, T. 3 N., R. 41 E. 3 M.

First American Title Company
 Idaho Falls, Idaho 83404

This sketch is made solely for the purpose of assisting in locating the premises. The company assumes no liability for alleged loss or damage which may result from reliance on this map.



CURVE DATA				
CURVE NO.	RADIUS	Δ	L	C
C-1	3275.11	0° 20' 48"	99.88	45.88
C-2	3275.11	0° 21' 00"	50.54	50.54

NOTES

indicates a 1/2" x 24" iron rod placed with a yellow plastic cap marked L.S. 760.
 a 10' utility easement is reserved along the street side of all lots.

Bonneville County will not maintain roads until constructed to County standards and approved by the County Engineer.

N.W. COR. SEC. 8,
 T. 3 N., R. 41 E. 3 M.
 (BLM. "T" IRON)

U.S. HIGHWAY
 [FEDERAL AID PROJECT NO. F-6501(3)]