

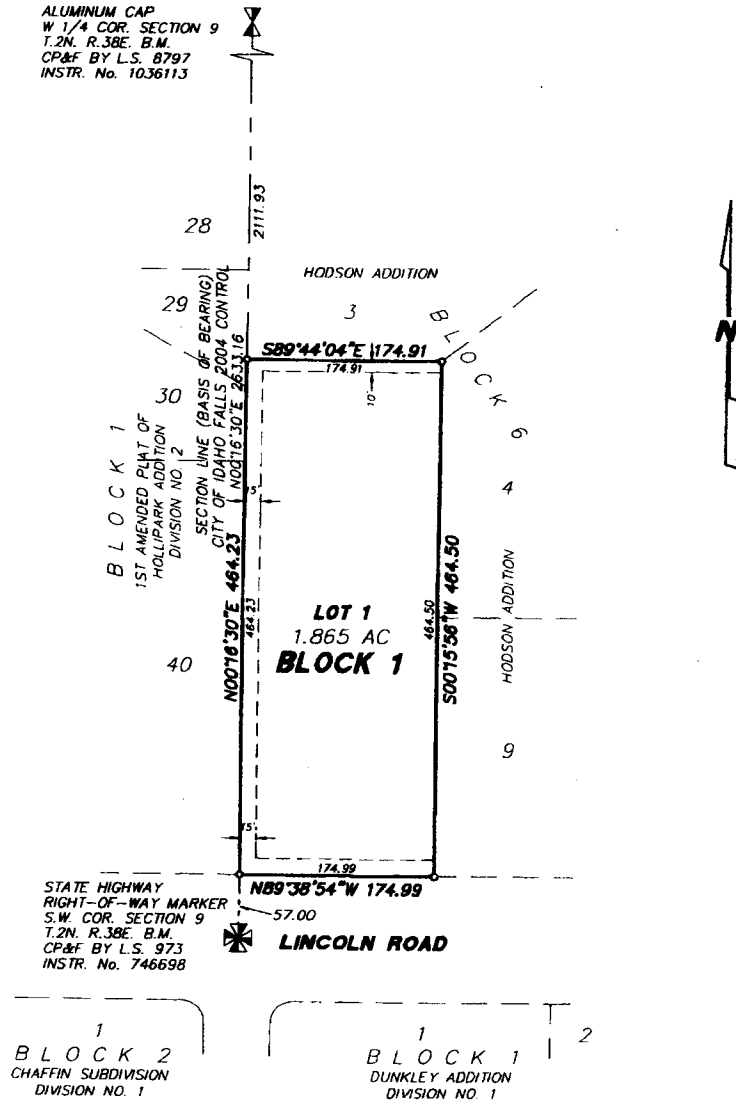
IDAHO FALLS COMMERCE AND LABOR OFFICE

DIVISION NO. 1

AN ADDITION TO THE CITY OF IDAHO FALLS, BONNEVILLE COUNTY, IDAHO

IN THE S.W. 1/4 OF SECTION 9 T.2N. R.38E. B.M.

ALUMINUM CAP
W 1/4 COR. SECTION 9
T.2N. R.38E. B.M.
CP&F BY L.S. 8797
INSTR. No. 1036113



First American Title Company
Idaho Falls, Idaho 83404
While this is a photographic reproduction of the recorded plat, the Company assumes no liability for variations, if any, with a re-survey.

LEGEND & NOTES

- o 1/2" Steel rebar found with caps stamped L.S.827
- A 15 foot wide Public Utility Easement is hereby granted along all road frontages within each lot. All other public utility easements are noted otherwise.