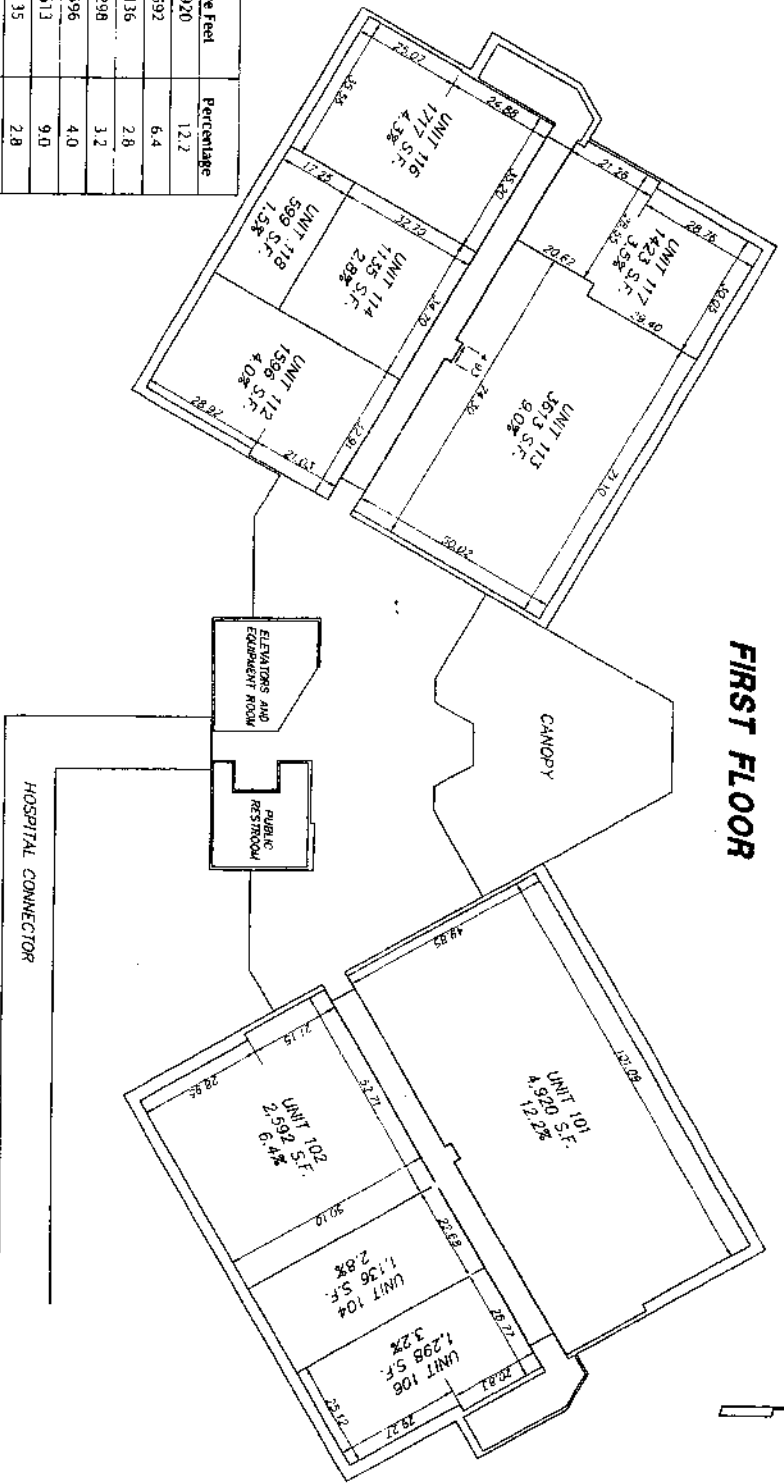


NOTE:
 THIS PLAT IS BEING RECORDED TO AMEND THE
 BOUNDARY AND CREATE UNIT 217. ALL OTHER
 UNITS WILL REMAIN THE SAME.

**SECOND AMENDED PLAT OF
 IDAHO FALLS MEDICAL OFFICE BUILDING**
 PURSUANT TO DAHO CODE TITLE 86, CHAPTER 16
 BEING PART OF LOT 1, BLOCK 1, IDAHO FALLS REGIONAL MEDICAL CENTER
 AN ADDITION TO THE CITY OF IDAHO FALLS, BONNEVILLE COUNTY, IDAHO
 CITY OF IDAHO FALLS, BONNEVILLE COUNTY, IDAHO

FIRST FLOOR



Unit	Square Feet	Percentage
101	4,920	12.2
102	2,392	6.4
104	1,136	2.8
106	1,298	3.2
112	1,596	4.0
114	3,613	9.0
116	1,717	4.3
117	1,423	3.5
118	599	1.5
201	1,049	2.6
202	5,056	12.5
203	2,306	5.7
207	1,714	4.3
211	940	2.3
212	2,259	5.6
213	1,997	5.0
214	1,064	2.6
215	1,852	4.6
216	1,768	4.4
217	288	0.7
TOTAL	40,322	100.0

RECORDER'S CERTIFICATE

I hereby certify that the foregoing subdivision plat of the SECOND AMENDED PLAT OF THE IDAHO FALLS MEDICAL OFFICE BUILDING, as shown to the City of Idaho Falls, Bonneville County, Idaho was filed for recording in the office of the recorder of Bonneville County, Idaho on this _____ day of _____, 2010 at _____ and recorded under Instrument Number _____.

[Signature]
 Bonneville County Recorder

SURVEYOR'S CERTIFICATE

I, Robert Jon Mullen, do hereby certify that I am a Professional Land Surveyor, licensed by the State of Idaho and that the SECOND AMENDED PLAT OF THE IDAHO FALLS MEDICAL OFFICE BUILDING, a subdivision project as described in the Declaration of Covenants, Conditions and Restrictions, was drawn from an actual survey made on the ground under my supervision and accurately represents the points plotted thereon and is in conformity with the Condominium Property Act under Chapter 55-151 of the Idaho Code.

STATE OF IDAHO
 COUNTY OF BONNEVILLE }
 I hereby certify that the within subdivision plat
 was filed for recording in the office of the recorder of
 Bonneville County, Idaho on this _____ day of _____, 2010
 at _____ and recorded under Instrument Number _____.
 By: *[Signature]*
 ROBERT JON MULLEN, Surveyor
 D-1234

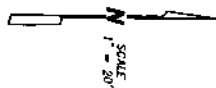
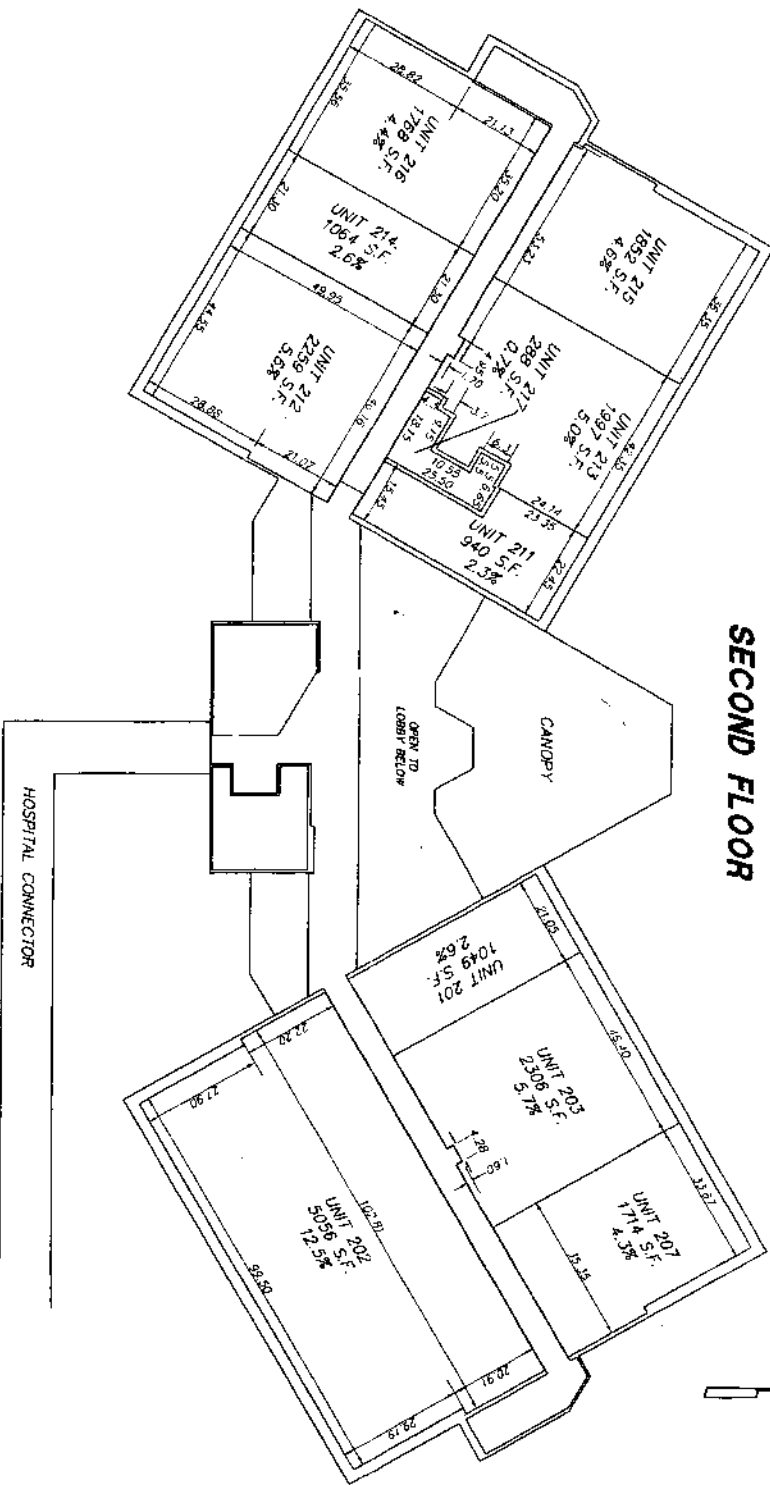


Mountain River
 Engineering
 SHEET 2 OF 3

NOTE:
 THIS PLAN IS BEING RECORDED TO AMEND THE
 BOUNDARY AND CREATE UNIT 217. ALL OTHER
 UNITS WILL REMAIN THE SAME.

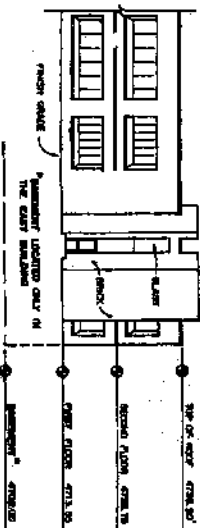
**SECOND AMENDED PLAT OF
 IDAHO FALLS MEDICAL OFFICE BUILDING**
 PURSUANT TO DAHO CODE, TITLE 55, CHAPTER 15
 BEING PART OF LOT 1, BLOCK 1, IDAHO FALLS REGIONAL MEDICAL CENTER
 AN ADDITION TO THE CITY OF IDAHO FALLS, BONNEVILLE COUNTY, IDAHO
 CITY OF IDAHO FALLS, BONNEVILLE COUNTY, IDAHO

SECOND FLOOR



**Mountain River
 Engineering**
 SHEET 3 OF 3

BUILDING ELEVATIONS



RECORDER'S CERTIFICATE

I hereby certify that the foregoing subdivision plat of the SECOND AMENDED PLAT OF THE IDAHO FALLS MEDICAL OFFICE BUILDING, as addition to the City of Idaho Falls, Bonneville County, Idaho was laid out and recorded in the office of the Recorder of Bonneville County, Idaho on this _____ day of _____, 2010 at _____ in the recorded order instrument number _____.

[Signature]
 Bonneville County Recorder

SURVEYOR'S CERTIFICATE

I, Robert Jon Meeks, do hereby certify that I am a Professional Land Surveyor, licensed by the State of Idaho and that this SECOND AMENDED PLAT OF THE IDAHO FALLS MEDICAL OFFICE BUILDING, as addition to the City of Idaho Falls, Bonneville County, Idaho was laid out and recorded in the office of the Recorder of Bonneville County, Idaho on this _____ day of _____, 2010 at _____ in the recorded order instrument number _____.

STATE: IDAHO
 CERTIFICATE NO. 8795

