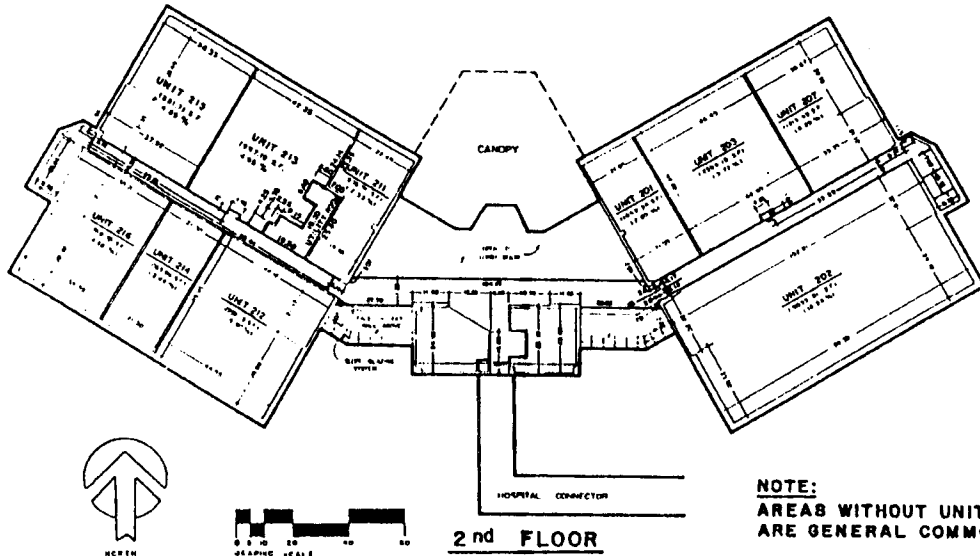
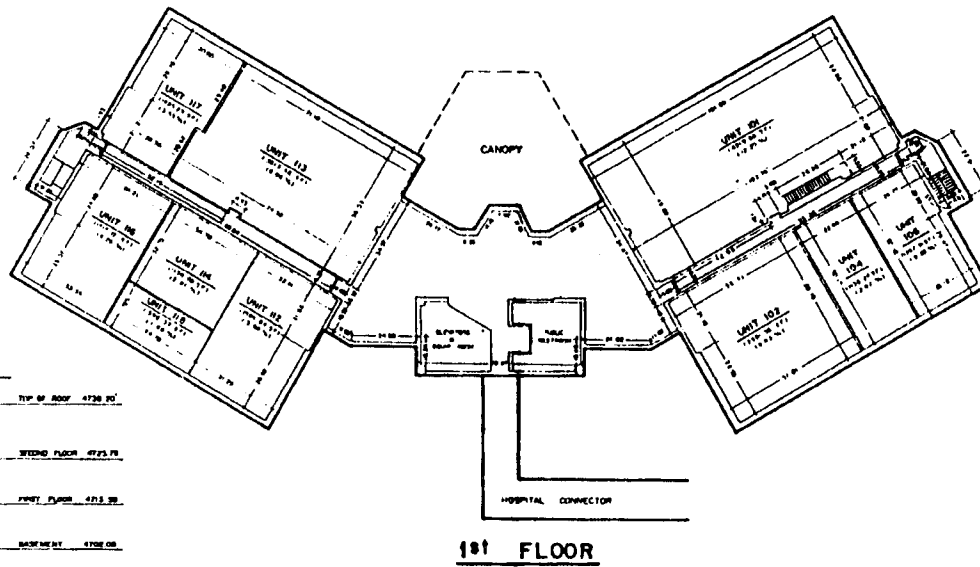


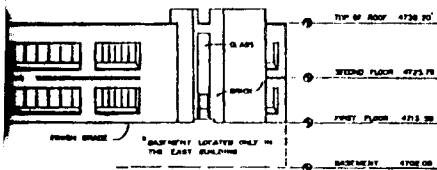
**FIRST AMENDED PLAT OF THE  
IDAHO FALLS MEDICAL OFFICE BUILDING  
A CONDOMINIUM PROJECT**  
IN THE CITY OF IDAHO FALLS, BONNEVILLE COUNTY, IDAHO  
BEING PART OF LOT 1, BLOCK 1, IDAHO FALLS REGIONAL MEDICAL CENTER  
IN THE SOUTHEAST 1/4 OF SECTION 28, T. 2 N., R. 38 E., B. M.



**NOTE:**  
AREAS WITHOUT UNIT DESIGNATIONS  
ARE GENERAL COMMON AREAS.



**BUILDING ELEVATIONS**



**1st FLOOR**

1st & 2nd FLOOR PLANS  
EXHIBIT "B"  
TO DECLARATION OF CONDOMINIUM  
PLAT OF PROPERTY & IMPROVEMENTS  
SHEET 2 OF 3

*First American Title Company*

Idaho Falls, Idaho 83404

This sketch is made solely for the purpose of assisting in locating the premises. The company assumes no liability for alleged loss or damage which may result from reliance on this map.

