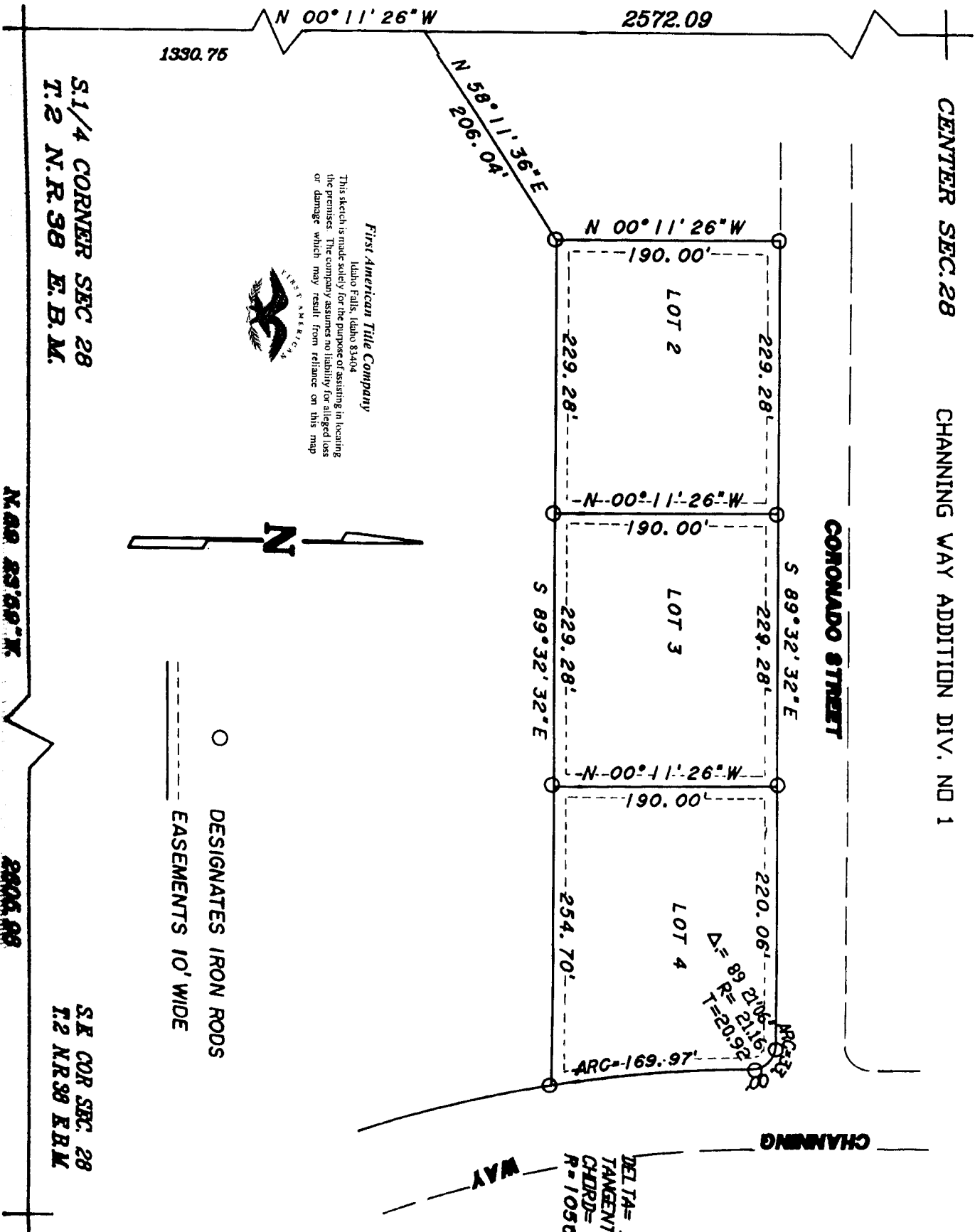


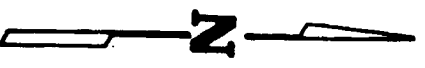
**FIRST AMENDED PLAT OF THE
 IDAHO FALLS REGIONAL MEDICAL CENTER
 AN ADDITION TO THE CITY OF IDAHO FALLS, BONNEVILLE COUNTY, IDAHO
 A REPLAT OF A PORTION OF LOT 1, BLOCK 1
 ELSWORTH ENGINEERING INC.**

CENTER SEC. 28 CHANNING WAY ADDITION DIV. NO 1

UNPLATTED



First American Title Company
 Idaho Falls, Idaho 83404
 This sketch is made solely for the purpose of assisting in locating the premises. The company assumes no liability for alleged loss or damage which may result from reliance on this map.



O DESIGNATES IRON RODS
 --- EASEMENTS 10' WIDE

DELTA = 89° 32' 32"
 TANGENT = 85.17
 CHORD = 168.785
 R = 1050.996

H.C.A. ADDITION DIVISION NO. 1

S 1/4 CORNER SEC 28
 T: 2 N. R. 38 E. B. M.

S E COR SEC 28
 T: 2 N. R. 38 E. B. M.

N. 69° 23' 59" W

2006.88